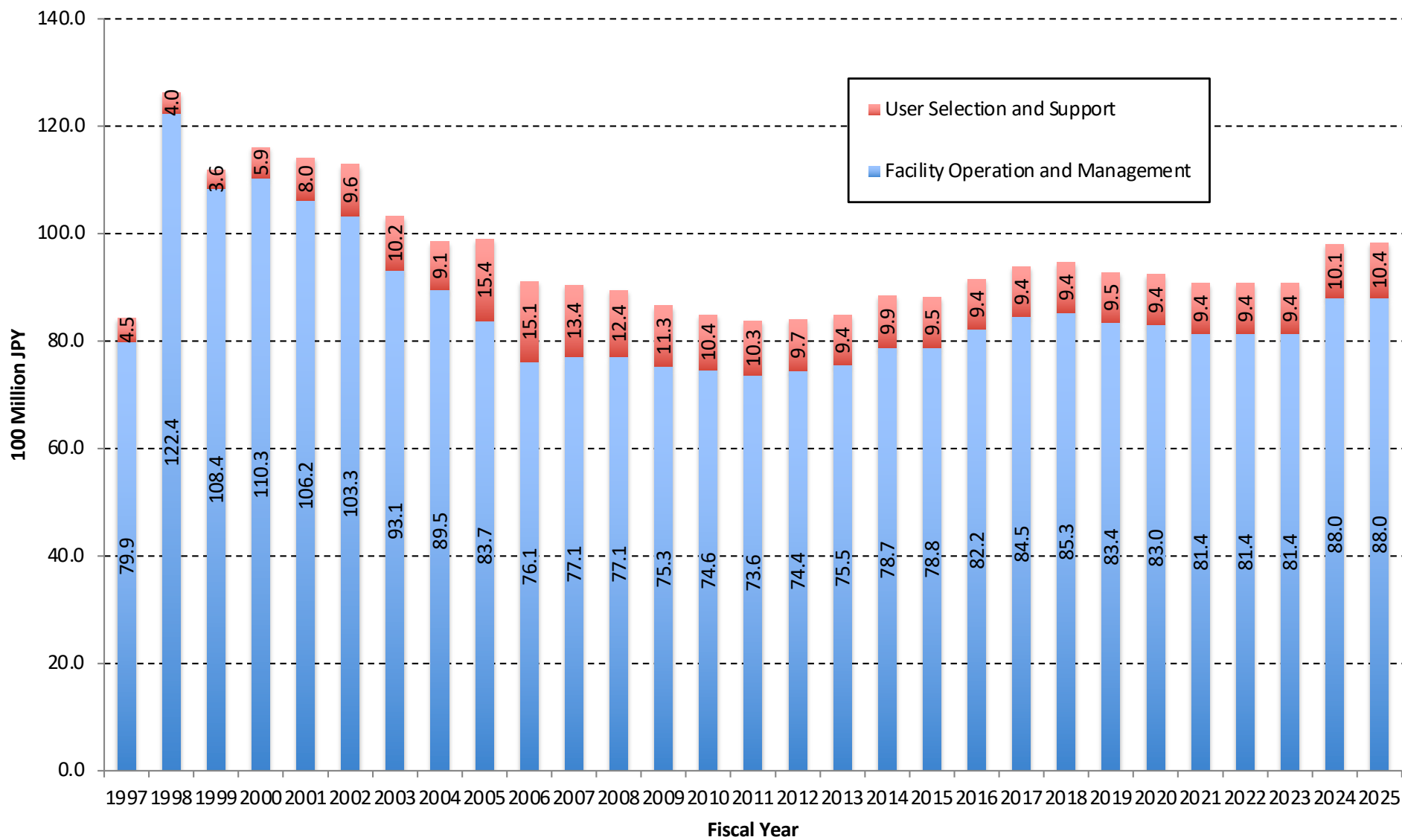


SPring-8 Operation Budget



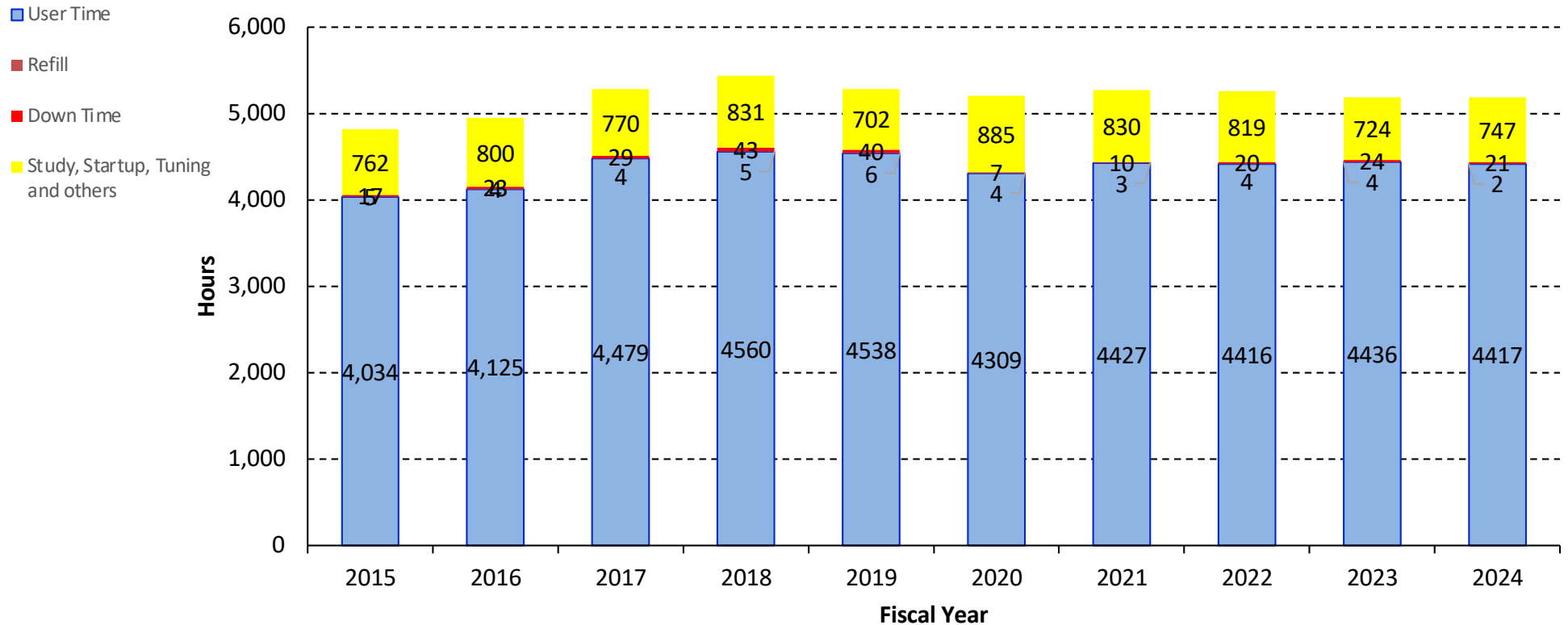
* Except construction budget

SPring-8 Operation Statistics

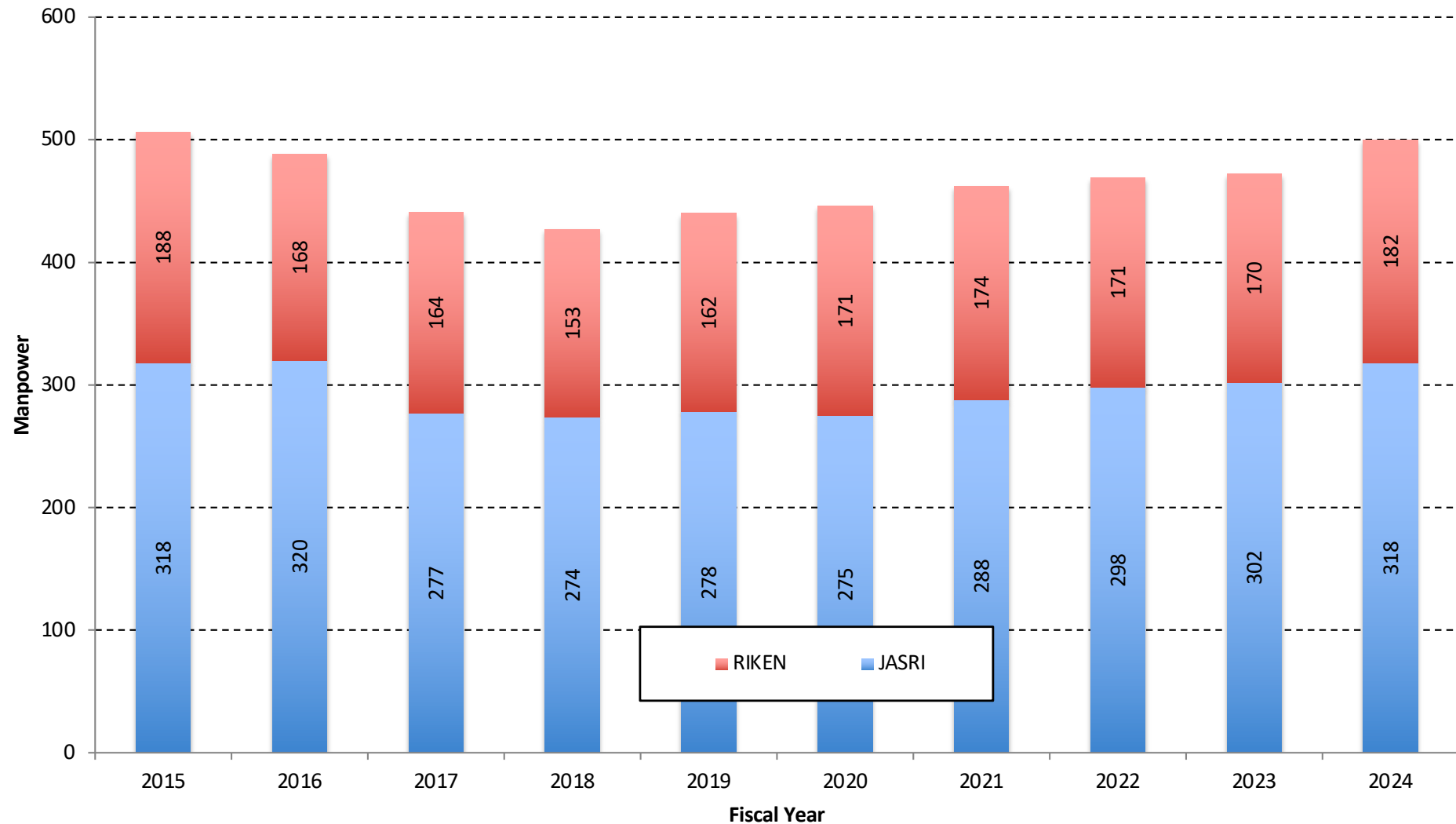
Hours

Fiscal Year	2015	2016	2017	2018	2019	2020	2021	2022	2023	2024
Machine Time	4,818	4,952	5,282	5,439	5,286	5,205	5,270	5,259	5,188	5,187
Study, Startup, Tuning and others	762	800	770	831	702	885	830	819	724	747
User Time	4,034	4,125	4,479	4,560	4,538	4,309	4,427	4,416	4,436	4,417
Down Time	17	23	29	43	40	7	10	20	24	21
Refill	5	4	4	5	6	4	3	4	4	2

* Refill which is the part of the User Time in the broad sense appears from FY2015 (Refill is not included on this table till FY2014).



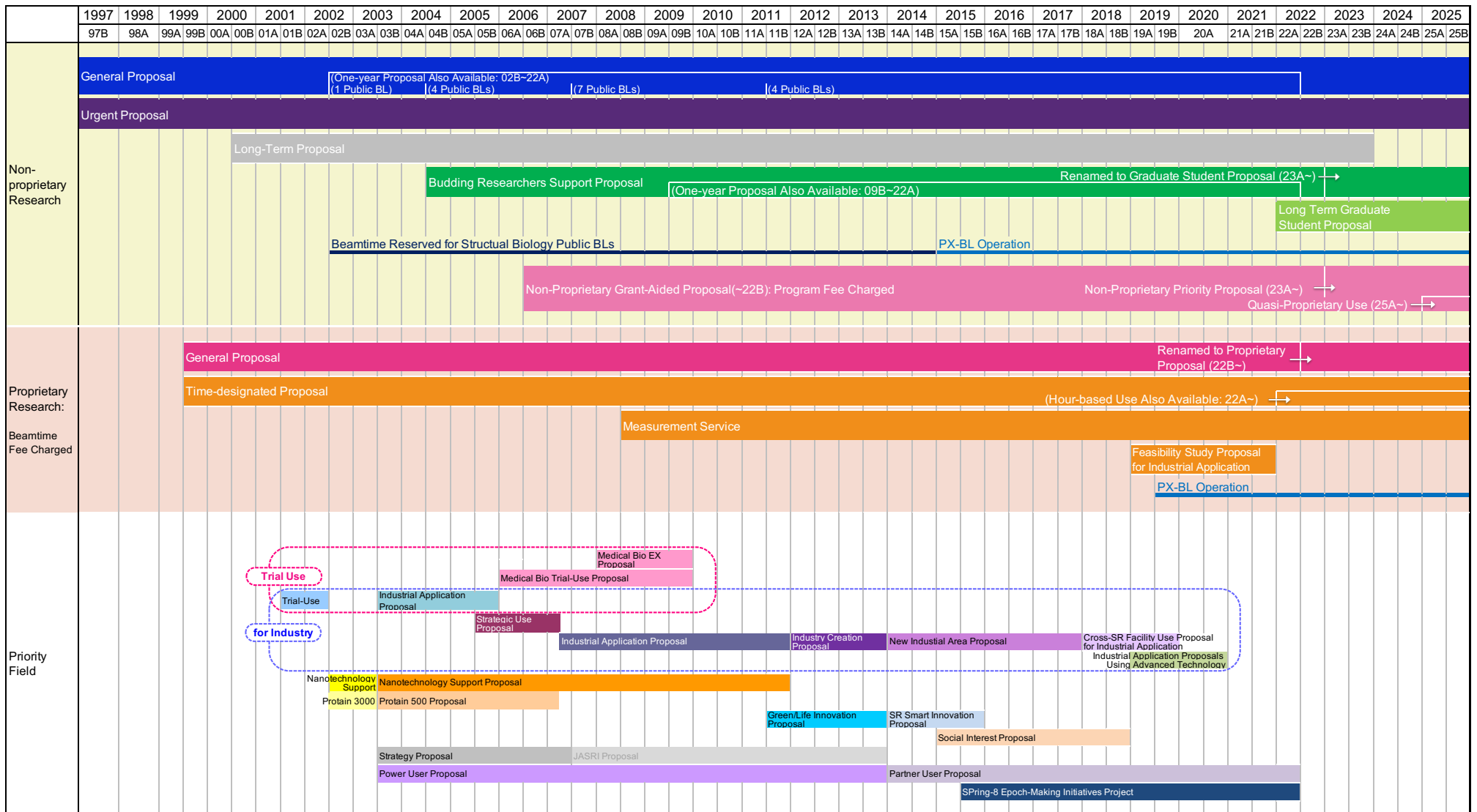
Manpower of RIKEN and JASRI at SPring-8



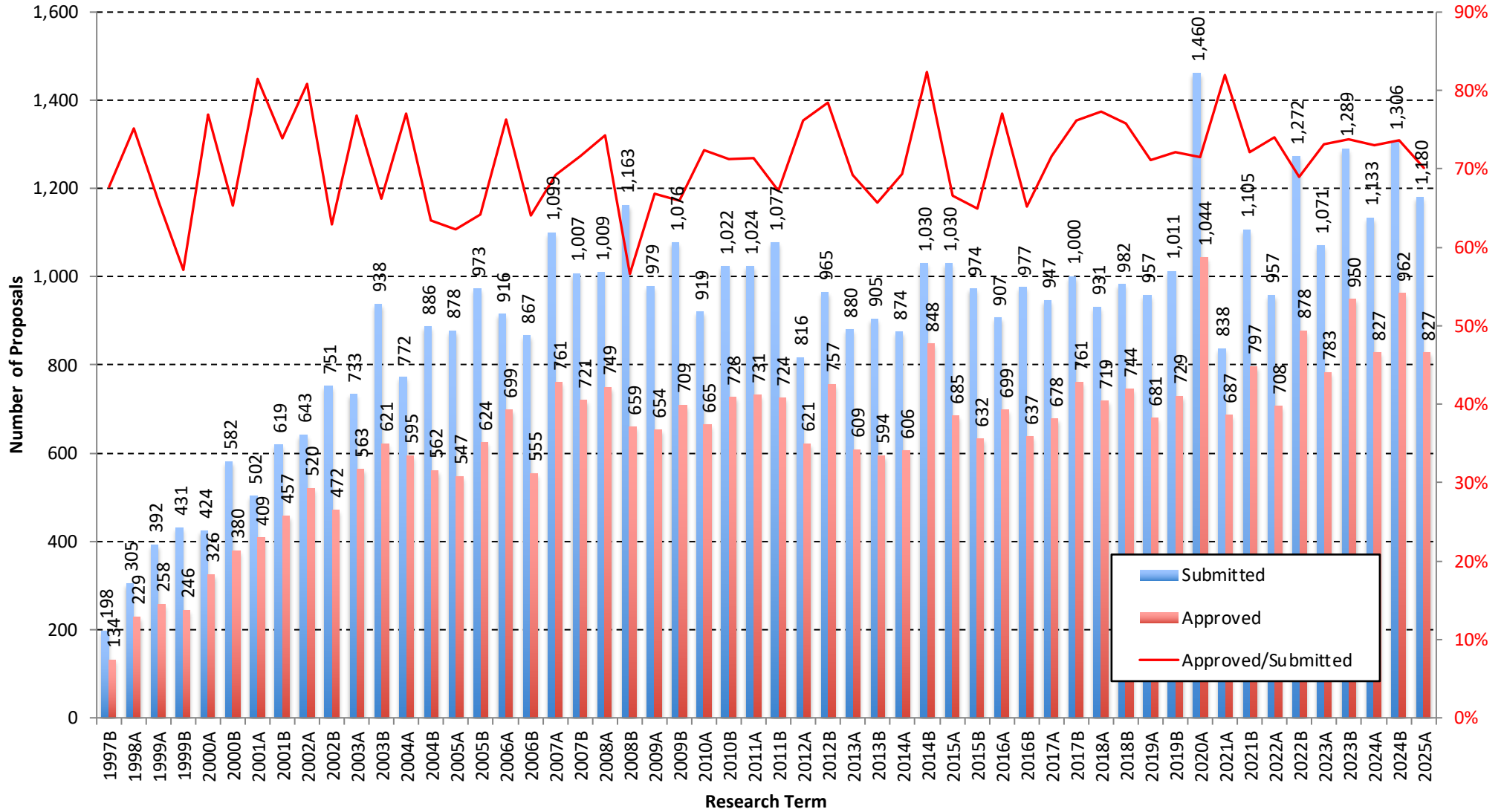
* This fig. shows the manpower of the past 10 years as of October 1st each year.

* Counting full-time employees. Except visiting scientists and students who are a kind of “part-time employees”.

Categories of Proposals for SPring-8 Public Beamlines

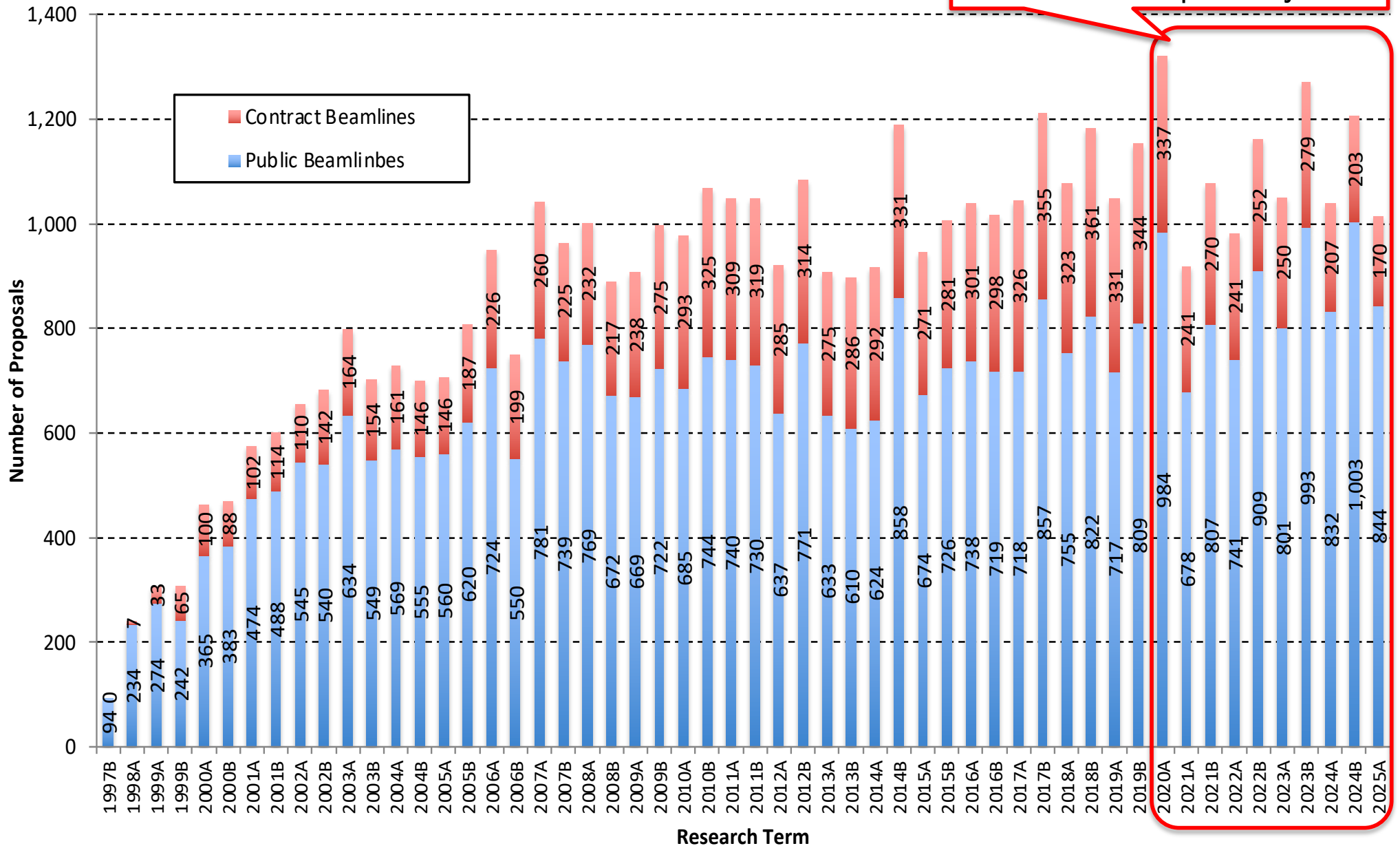


Numbers of Submitted and Approved Proposals at SPring-8 Public Beamlines

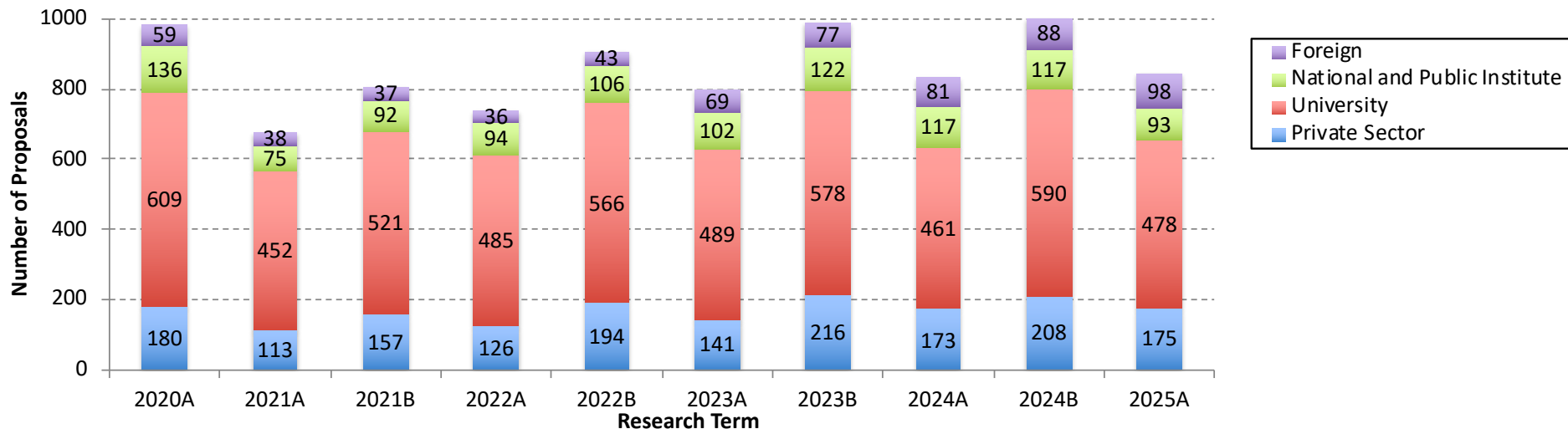


Number of Conducted Proposals at SPring-8 Public and Contract Beamlines

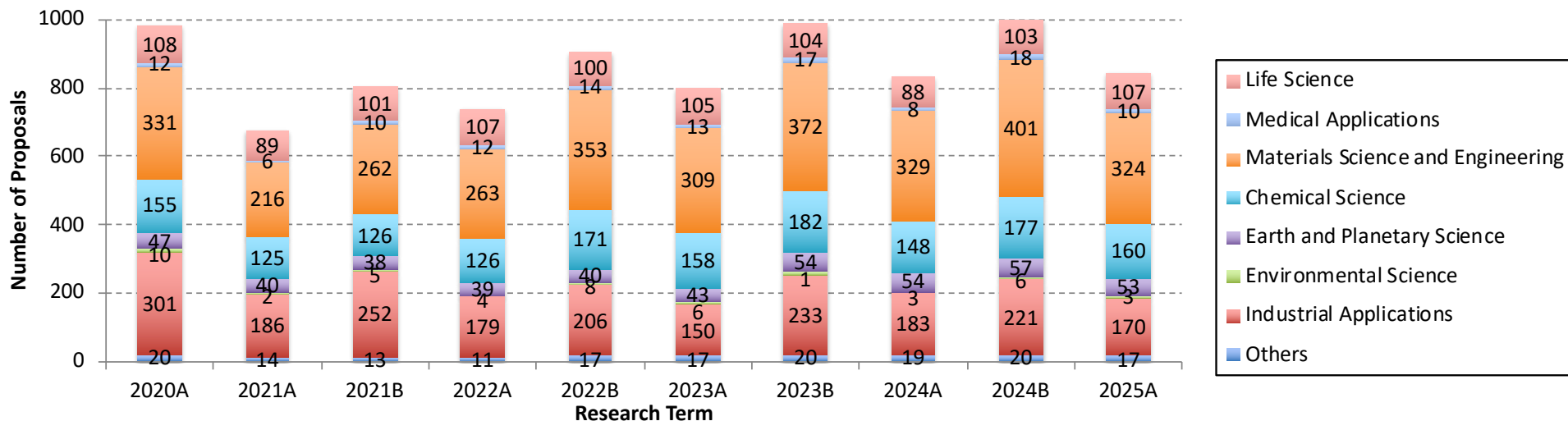
The next page shows the details of the past 5 years



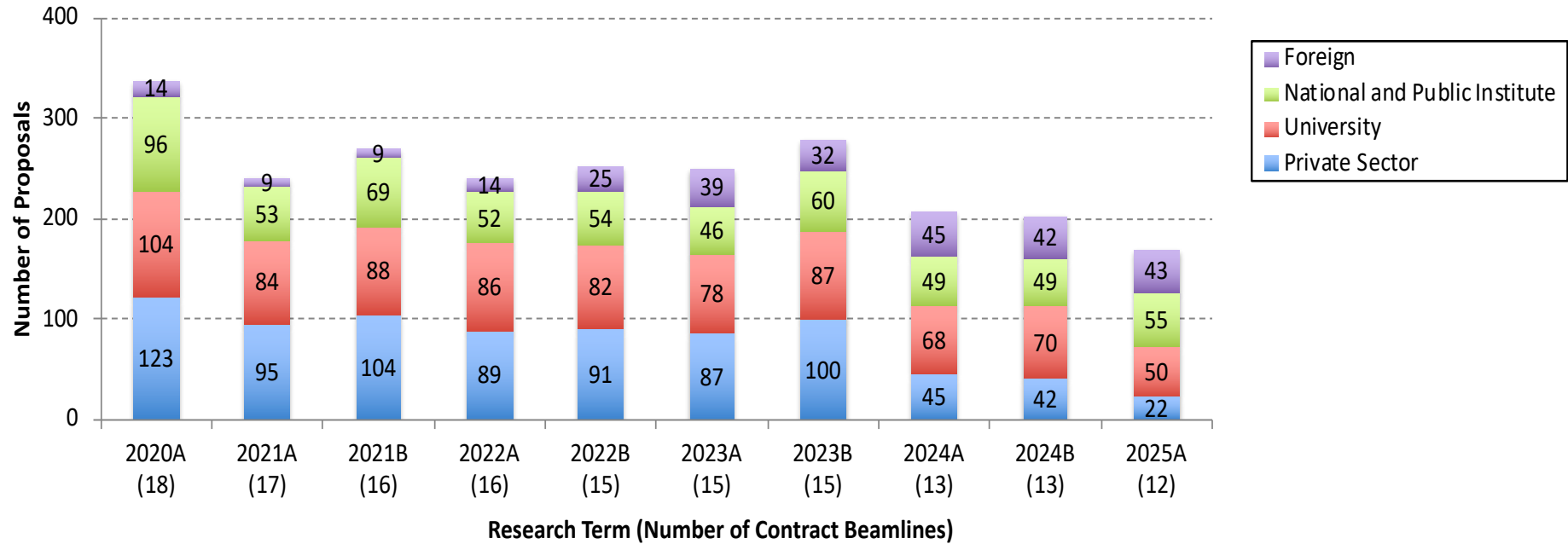
Number of Conducted Proposals Categorized by Project Leader's Affiliations at SPring-8 Public Beamlines



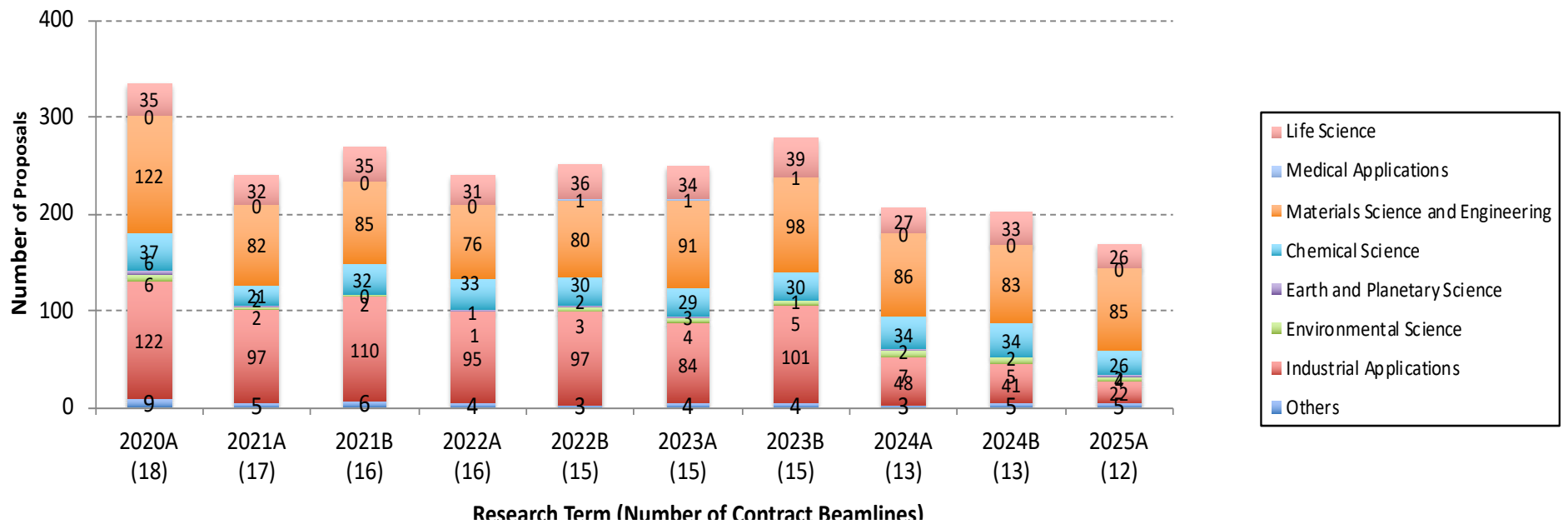
Number of Conducted Proposals Categorized by Research Areas at SPring-8 Public Beamlines



Number of Conducted Proposals Categorized by Project Leader's Affiliations at SPring-8 Contract Beamlines

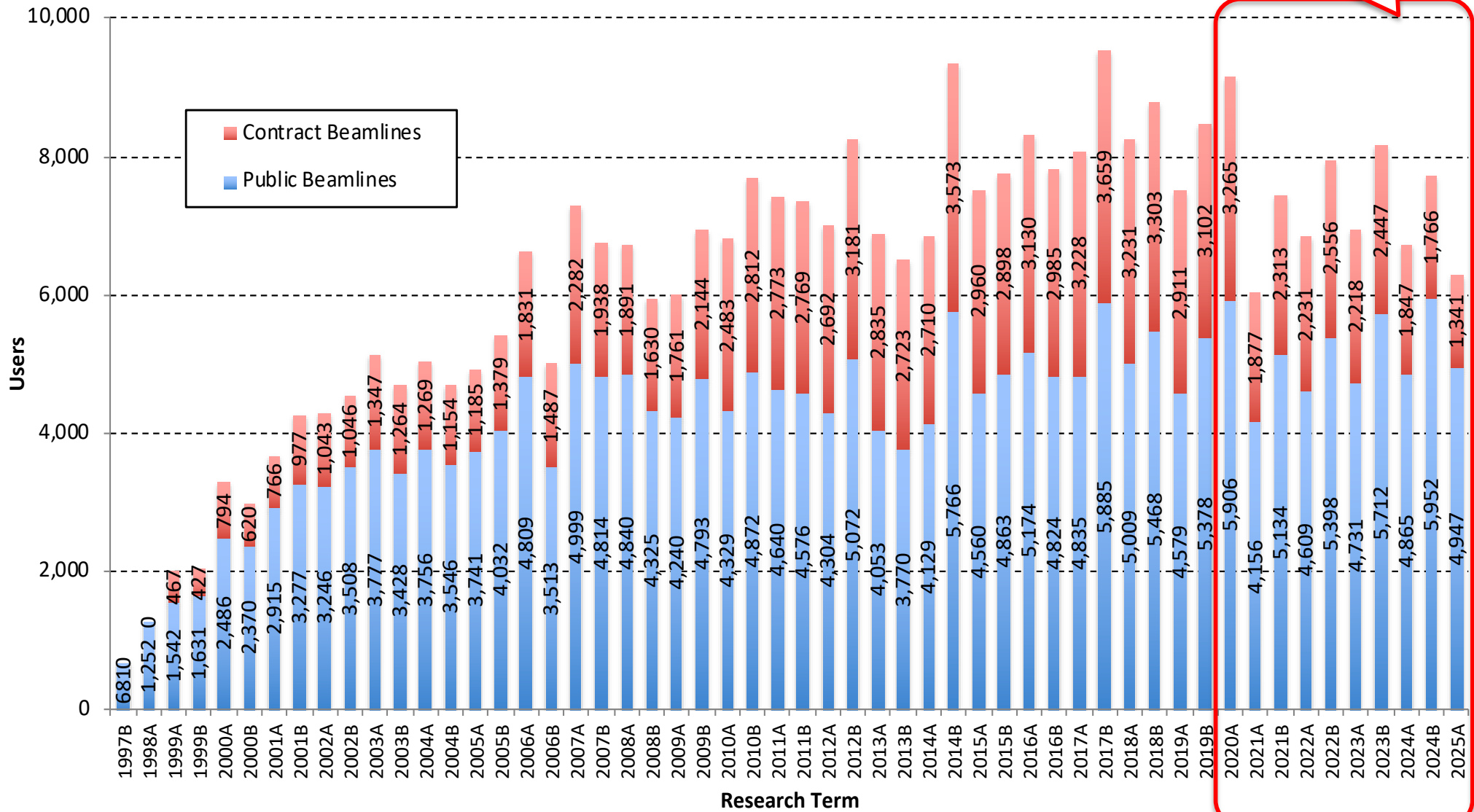


Number of Conducted Proposals Categorized by Research Areas at SPring-8 Contract Beamlines

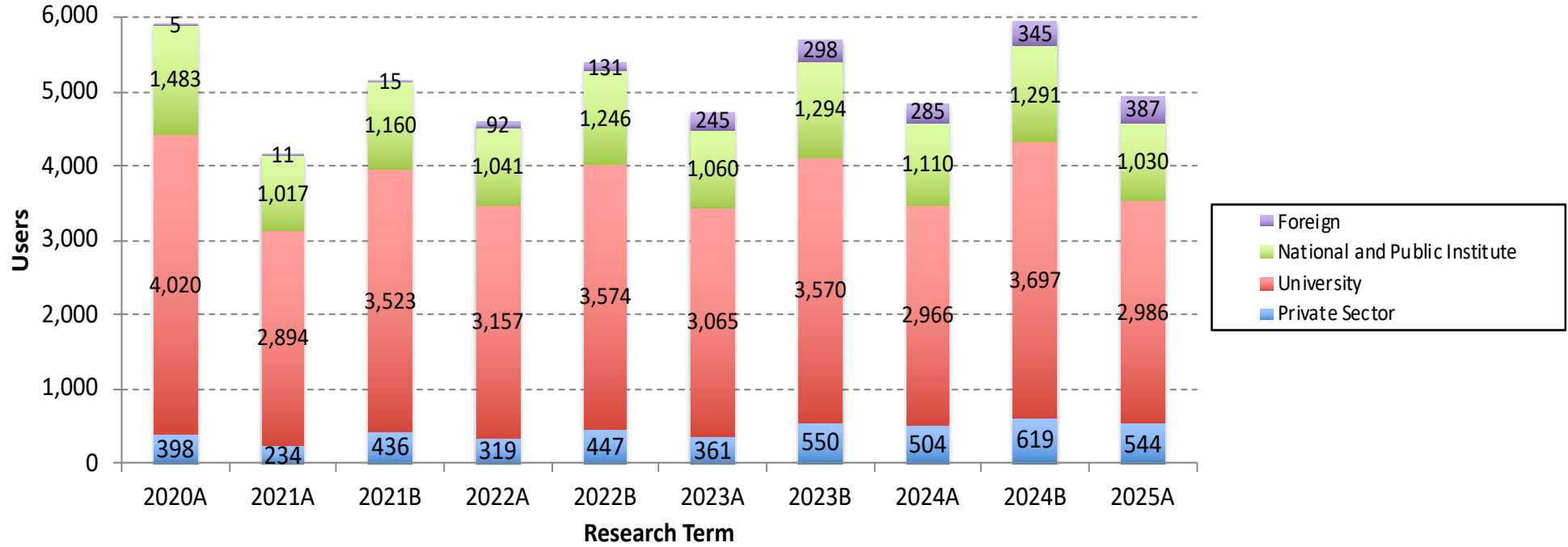


Number of the User Visits at SPring-8 Public and Contract Beamlines

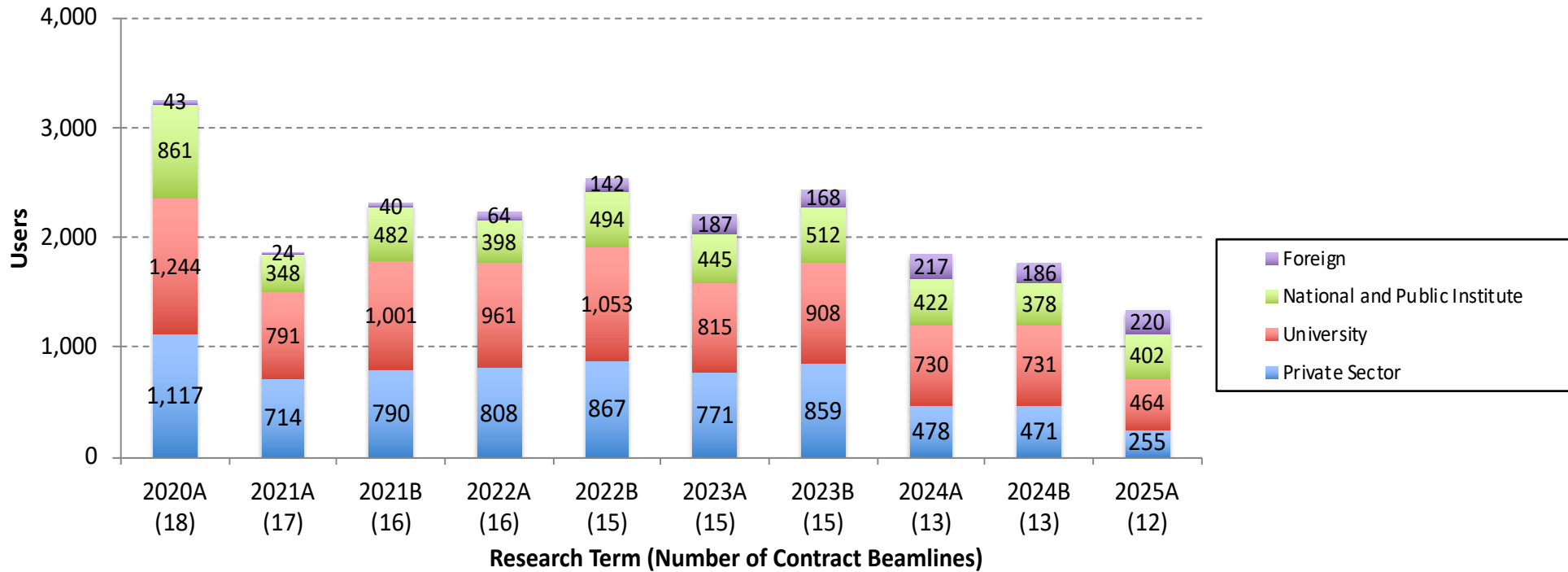
The next page shows the details of the past 5 years



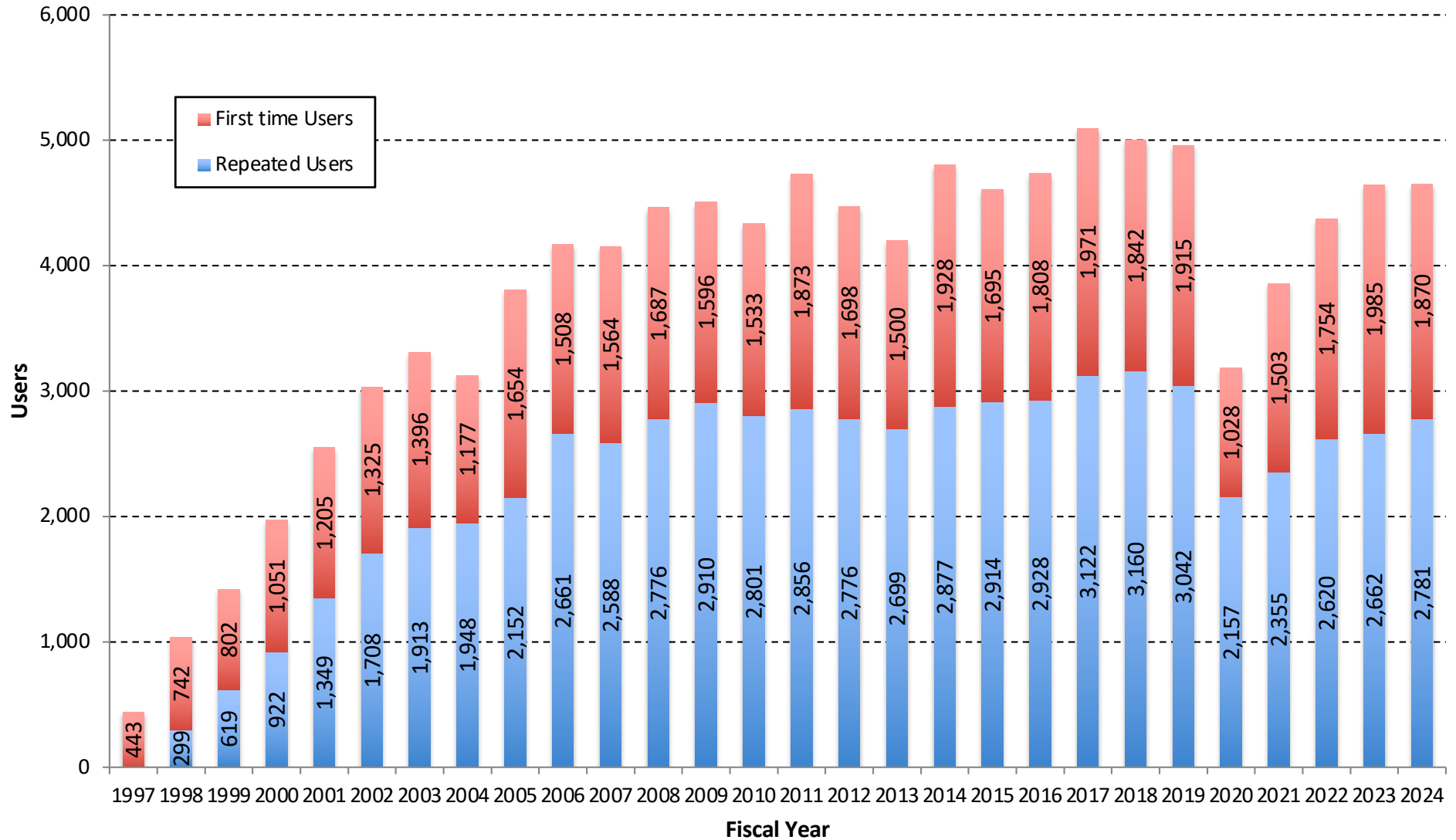
Number of User Visits Categorized by Affiliations at SPring-8 Public Beamlines



Number of User Visits Categorized by Affiliations at SPring-8 Contract Beamlines



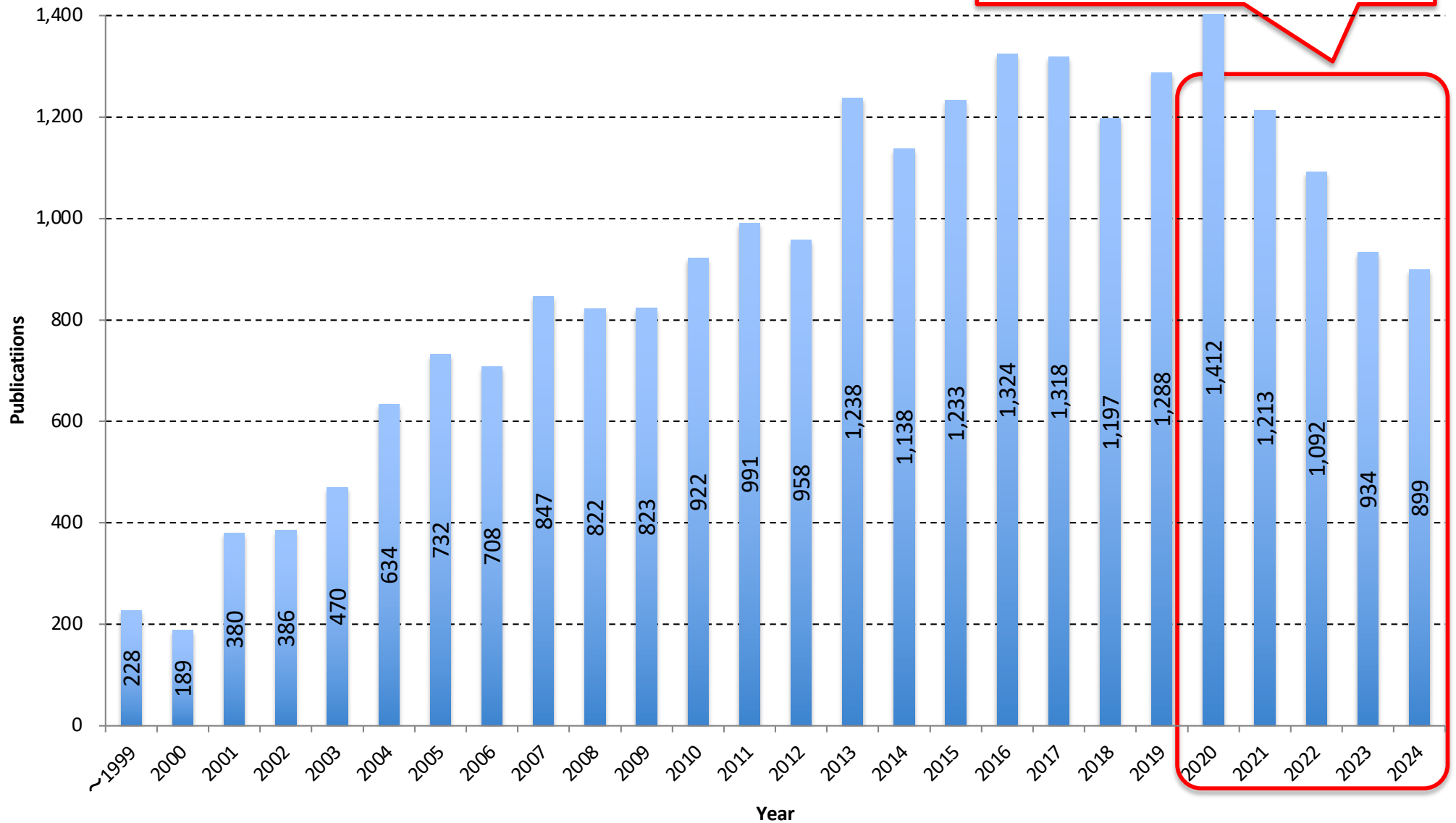
Number of Unique Users at SPring-8 Public and Contract Beamlines



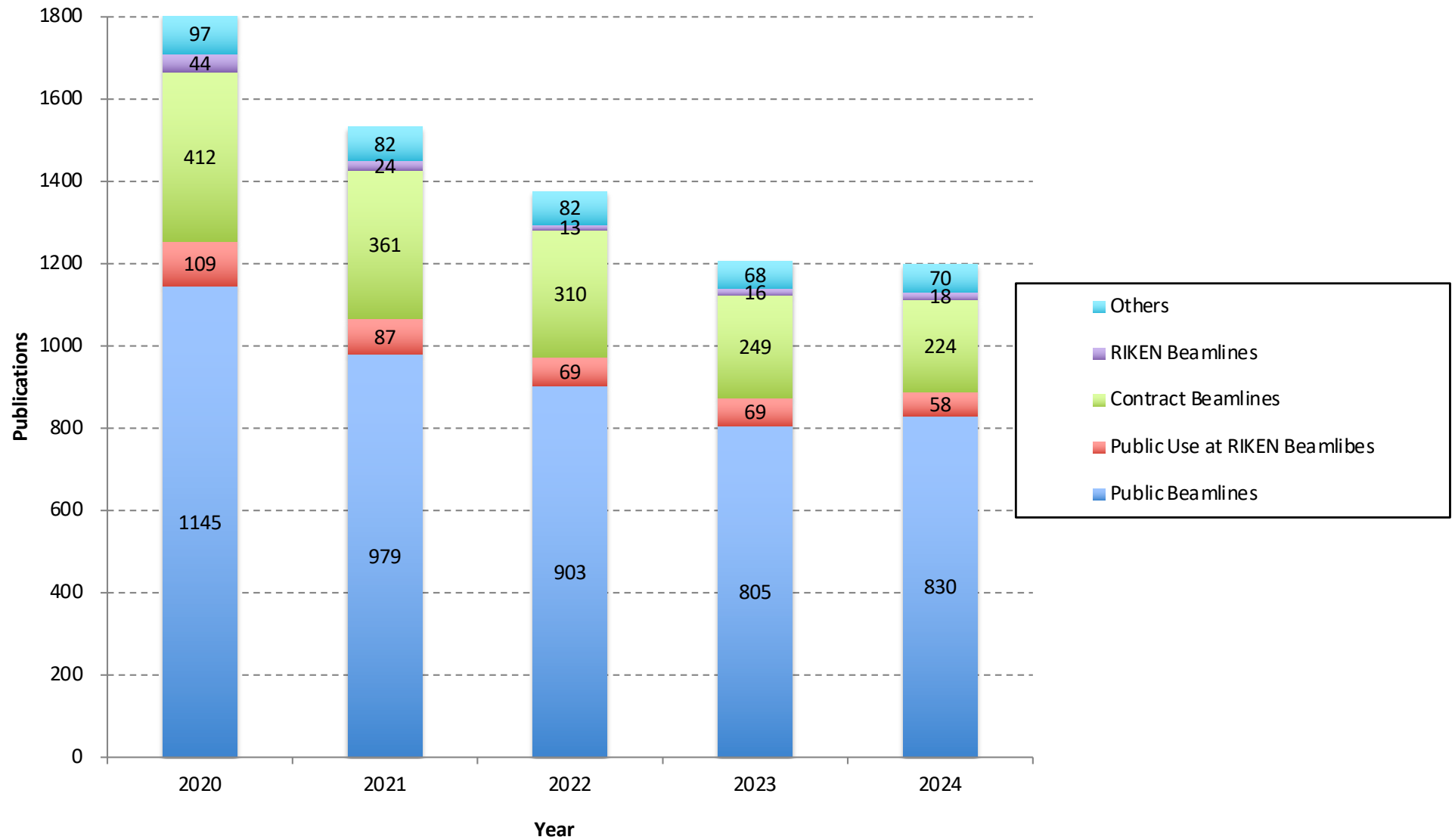
* An individual is counted as 1 user no matter how often the user conducts experiments.

Number of Refereed Publications at SPring-8 as of March 31, 2025

The next page shows the details of the past 5 years



Number of Refereed Publications Categorized by Beamlines at SPring-8



* Total number of publications in each year is larger than the number of the previous page because of the gross count.