

# SPring-8 Research Promotion and User Support

**Takashi TAKEDA**

In October 1997, SPring-8 formally opened for research and started providing beam time to users. The Japan Synchrotron Radiation Research Institute (JASRI), assumed responsibility for managing SPring-8's operation, organizing two annual calls for applications to conduct research using its public beamlines, and supplying comprehensive user support services, including information and technical assistance. JASRI was established in 1990 as a not-for-profit foundation. Legislation enacted in 1994 designated it as a national organization for promoting synchrotron radiation research.

## 1. Proposals for Public Beamlines

The deadline for the first call for proposals to conduct research at SPring-8 was January 10, 1997. This attracted a 198 proposals from Japan and overseas to use the facility's 10 public beamlines during a six-month period, starting in October 1997. All of these proposals involved non-proprietary research. They were evaluated by a Proposal Review Committee, consisting of experts from within and outside JASRI. The committee approved 130 applications. Applicants were notified of the results in April and beamtime allocations were completed by August.

(Table : Breakdown of proposals by type of organization)

(Table : Applications for first research period by research area)

From October through December 1997, SPring-8 had five operating cycles and provided 982 hours of user time to 489 researchers.

(Table : User operation (October through December 1997))

## 2. User Support

JASRI has published two manuals for users: the "SPring-8 User Guide" and the "SPring-8 Beamline Handbook." The

SPring-8 User Guide" provides information about user-related activities, ranging from research proposal submissions to the completion of experiments. The "SPring-8 Beamline Handbook" summarizes information about beamlines; including their specifications, performance characteristics, and technical details.

JASRI also produces "SPring-8 User Information," which is a bi-monthly publication that provides the latest information about SPring-8. This is mailed to registered users.

The SPring-8 Users Office organizes user registration, Guest House reservations, safety orientation presentations and the issuing of user cards, dosimeters and cafeteria payment cards. The SPring-8 user Guest House opened in August 1996 with 60 rooms and a further 96 rooms became available in October 1997. All rooms have a single bed and en suite facilities. A 120 seat cafeteria adjacent to the Guest House started a lunch service in March 1997. Breakfast and evening meal services began in October 1997.

When SPring-8 opened, JASRI provided a shuttle bus service between SPring-8 site and Harima Science Garden City. This continued until a public bus service became available.

JASRI supported travel and living expenses for a limited number of (non-proprietary research) public beamline users.

< Contact >

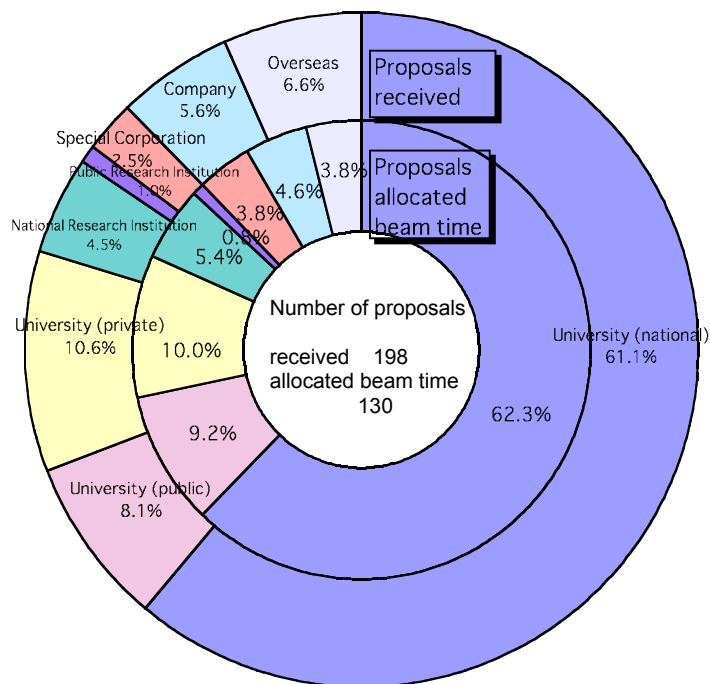
T. Makita, W. Matsumoto

SPring-8 Users Office, JASRI

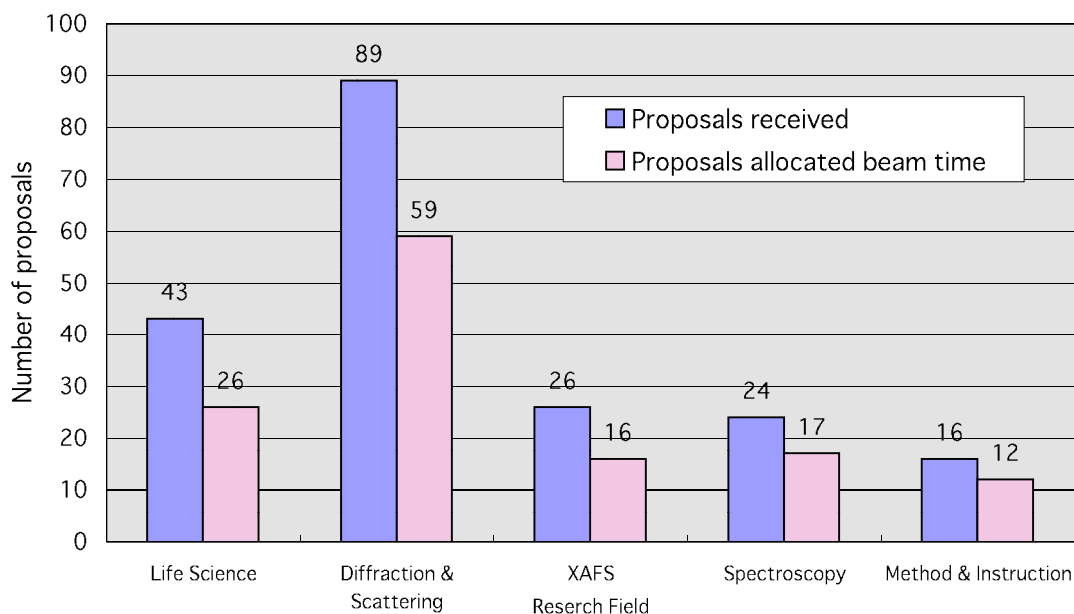
e-mail : sp8jasri@spring8.or.jp

Fax : 07915-8-0965

## Breakdown of proposals by organization



## Application for first research period by research area



## User operation (October through December 1997)

Cycle number	Operation period	User beam time (hour)	Number of experiments	Number of users	Mode of operation
97-08	10.08.97-10.17.97	168	14	55	8GeV, <20mA, multi-bunch, 2weeks
97-09	10.22.97-10.31.97	168	20	71	8GeV, <20mA, multi-bunch, 2weeks
97-10	11.05.97-11.14.97	167	23	91	8GeV, <20mA, multi-bunch, 2weeks
97-11	11.19.97-11.28.97	168	18	103	8GeV, <20mA, multi & 21 bunch, 2week
97-12	12.03.97-12.19.97	311	39	169	8GeV, <20mA, 21 bunch, 3weeks