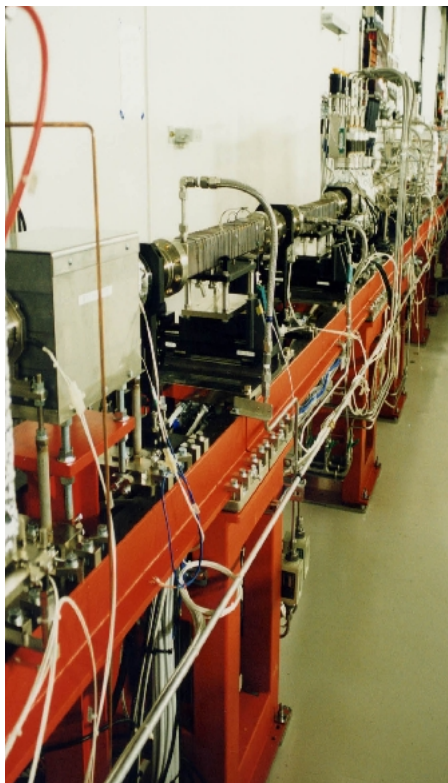
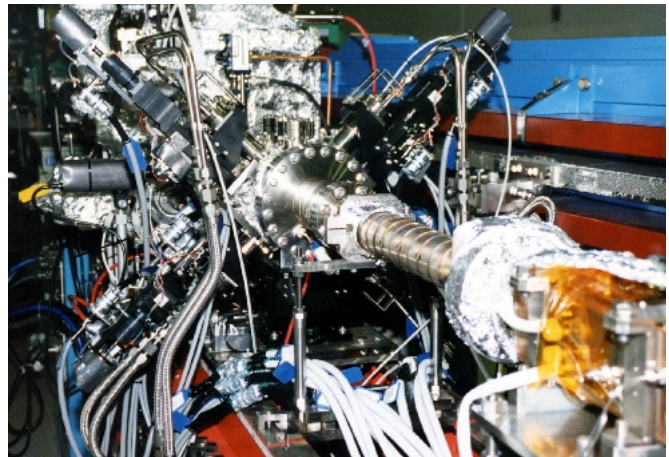
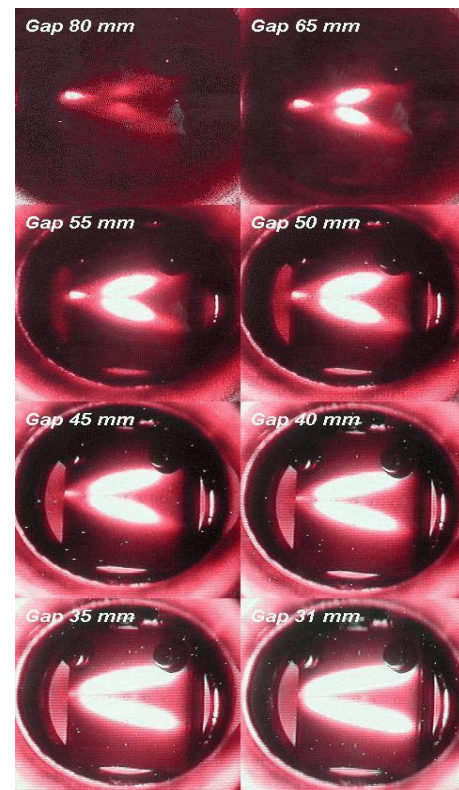


Figure-8 undulator of the out-vacuum type is adopted for BL27SU to provide both horizontally and vertically polarized soft X-rays with low heat load.

X-ray beam position monitor custom-designed for figure-8 undulator beamline is installed in front end of BL27SU. Four CVD diamond blades are used for sensors and are independently driven by actuators.



Front end components of BL29XU are mounted on the common base consisting of a pair of parallel I-beams. These include the lead collimator (left), the xy slit, the graphite filter, the pre-slit, and other components.



Photographs of radiation patterns from a figure-8 undulator installed in BL27SU for various gap values. As the gap is closed, larger "V" shape (specific to figure-8-undulator radiation) was observed.