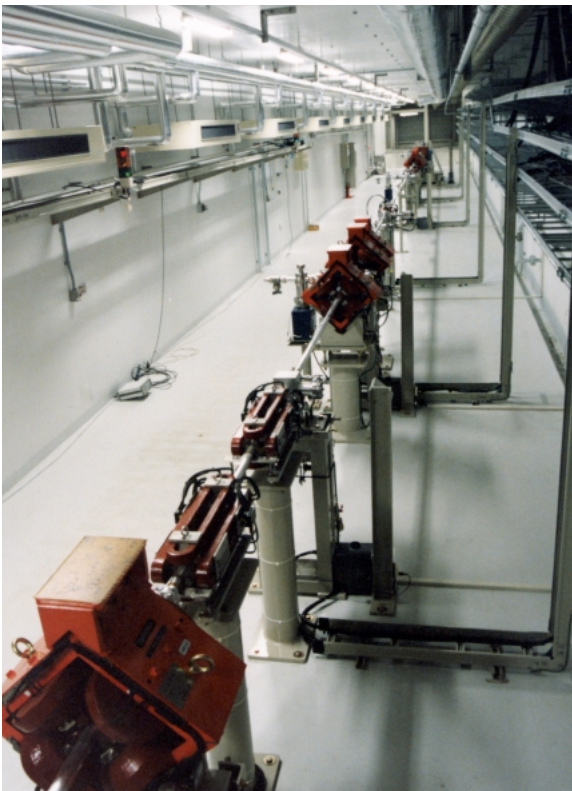
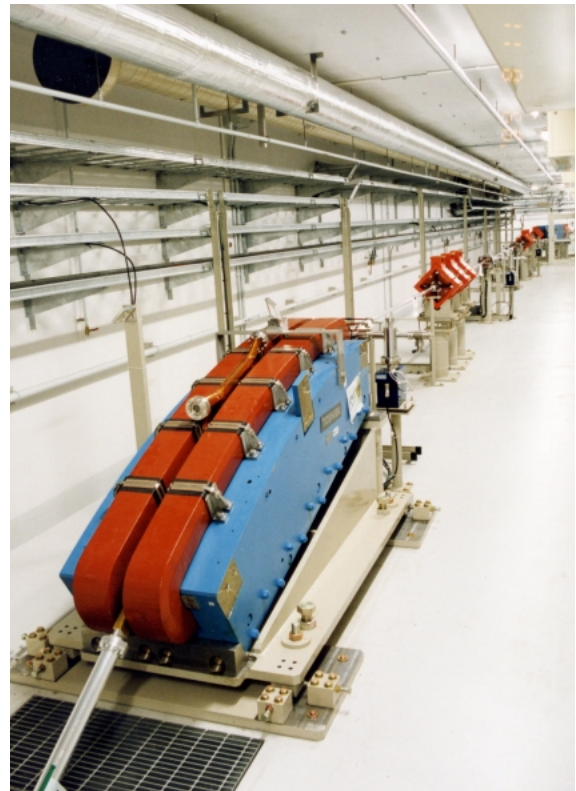


The left side beamline is L3BT. The right side beamline is L4BT, which is transported to the New SUBARU ring.



The L3BT line is used for physics research on the electron beam and is assembled by an isochronous system. The electron beam is led toward the Accelerator and Beamline R&D Facility.



The vertical bending magnet and beam dump at the end of L3BT is installed in the Accelerator and Beamline R&D Facility.