

# Management of SPring-8

## ● SPring-8 History

● The construction of SPring-8 began in 1991. The Japan Atomic Energy Research Institute (JAERI)\* and RIKEN (the Institute of Physical and Chemical Research) were responsible for constructing the facility. The Japan Synchrotron Radiation Research Institute (JASRI) was established in 1990 as a private non-profit foundation by raising funds from private companies. The followings are other highlights in the history of SPring-8.

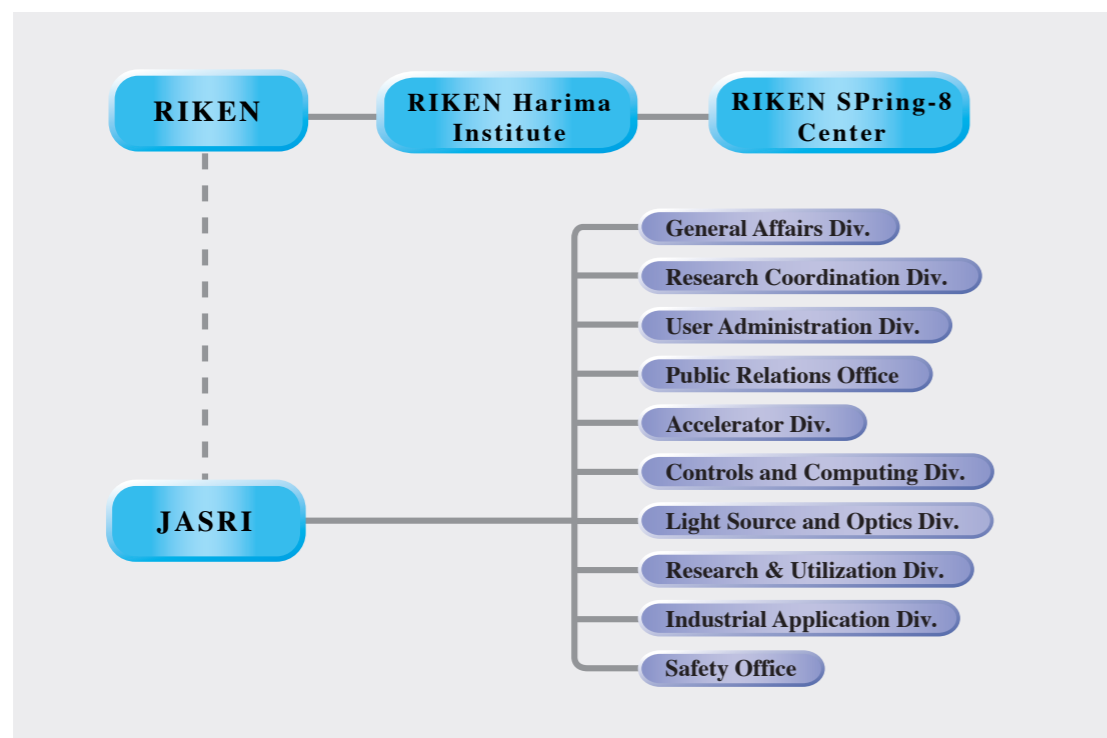
\*JAERI was reorganized into the Japan Atomic Energy Agency (JAEA) on October 1, 2005.

May. 1993	The SPring-8 Users Society was established.	June 2000	Completion of 1km-long beamline.
Feb. 1997	Proposals for the 1st Research Term were accepted.	Aug. 2000	Installation of 25 m-long undulator.
Mar. 1997	The first synchrotron radiation was observed in SPring-8.	Sep. 2001	Review of SPring-8 project started by the Ministry (MEXT).
Oct. 1997	SPring-8 was opened for users.	May 2004	Top-up operation started.
Mar. 1998	The 1st SPring-8 Symposium was held; held annually since then.	Sep. 2005	Low emittance top-up operation started.
May 1998	A beam current of 100 mA was stored in the storage ring.	Oct. 2007	10th anniversary of SPring-8
Oct. 1998	First contract beamline started operation.		

## ● Mission of JASRI as a Registered Institution for Promoting Synchrotron Radiation Research

JASRI has undertaken the following missions entrusted by RIKEN.

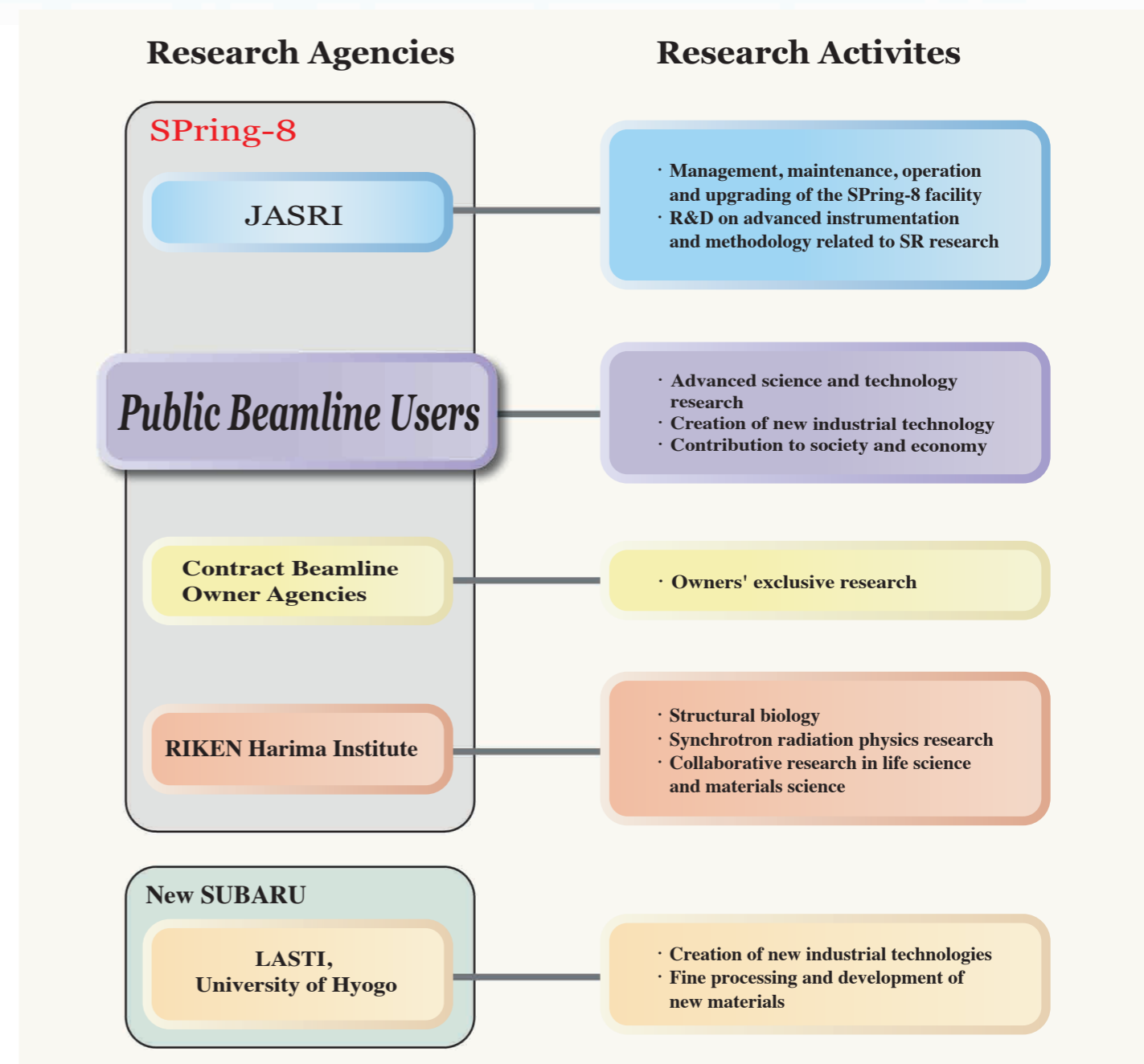
- Management, maintenance, operation and upgrading of the SPring-8 Facility
- User support such as user registration, safety control, information services and technical support
- R&D on advanced instrumentation and methodology related to SR research
- Support of the new beamline construction
- Safety regulations



SPring-8 Management Structure

## ● Formation of a Research Complex at SPring-8

- RIKEN opened the Harima Institute on the SPring-8 site in October 1997. This institute promotes research on life science and synchrotron radiation physics.
- JASRI undertakes research and development on advanced instrumentation and methodology related to SR research. These two institutes closely collaborate on research and they form the "Research Complex of SPring-8" together.
- Each of contract beamline owner agencies; universities, companies, and other organizations, own their beamline for each exclusive experiment and research.
- Laboratory of Advanced Science and Technology for Industry (LASTI), University of Hyogo make researches on material and medical sciences using 1.5GeV electron storage ring "NewSUBARU" in this site.

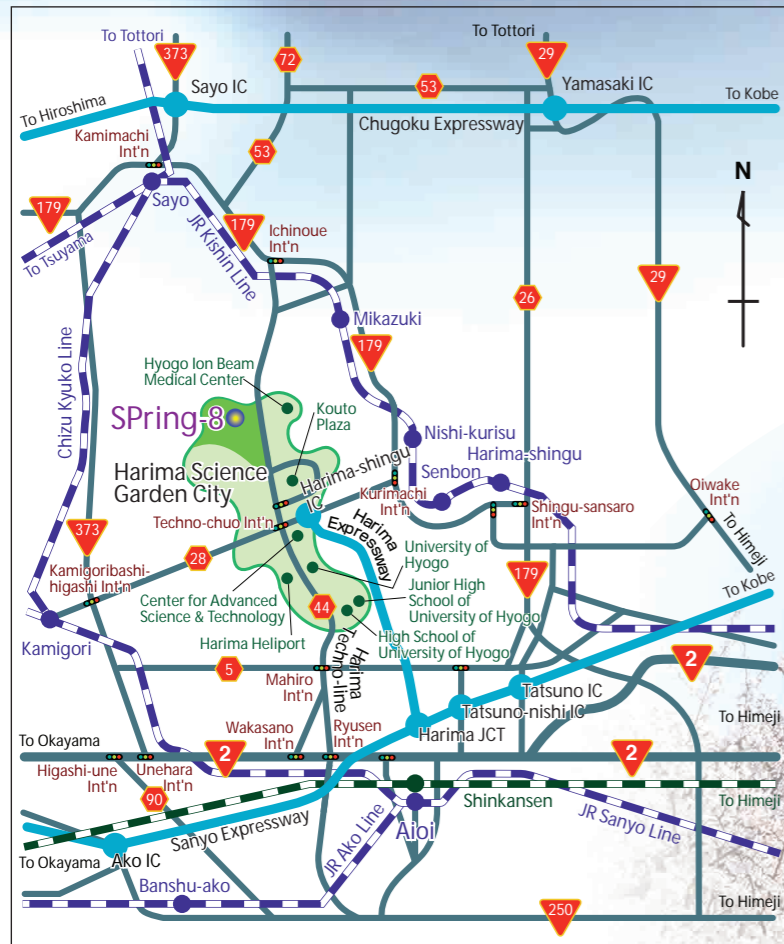


## ● How to Use SPring-8

- **Public beamline**  
 JASRI calls for proposals twice a year for those who are interested in using the public beamlines. The Proposal Review Committee reviews the proposals and beam time is allocated for proposals that are approved. If users submit their experimental reports, they are not charged for their beam time.
- **Contract beamline**  
 JASRI accepts proposals to construct contract beamlines at any time. These proposals are evaluated by the Contract Beamline Committee.

## Location of SPring-8

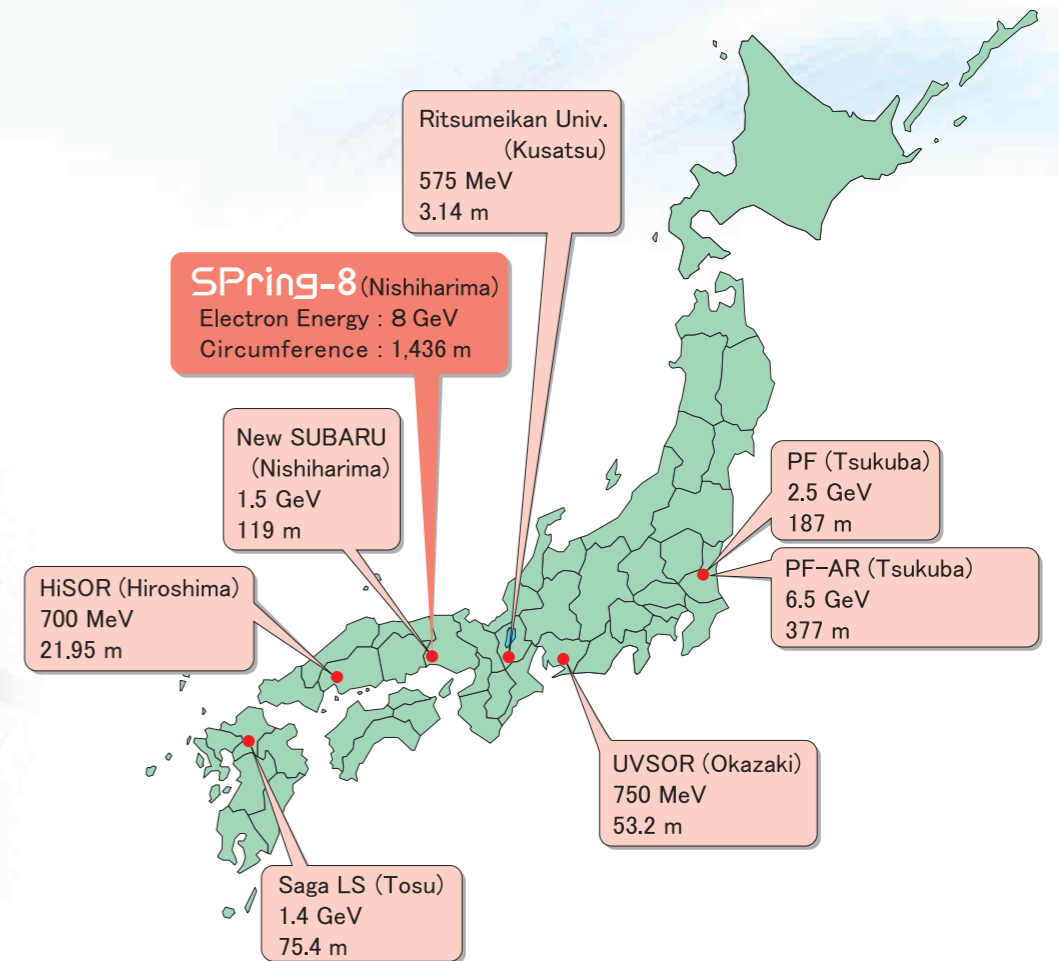
SPring-8 is located at the north end of the Harima Science Garden City, which is a part of the Nishiharima Technopolis. The Hyogo Prefectural Government is actively promoting the area as an attractive location for activities related to science and technology.



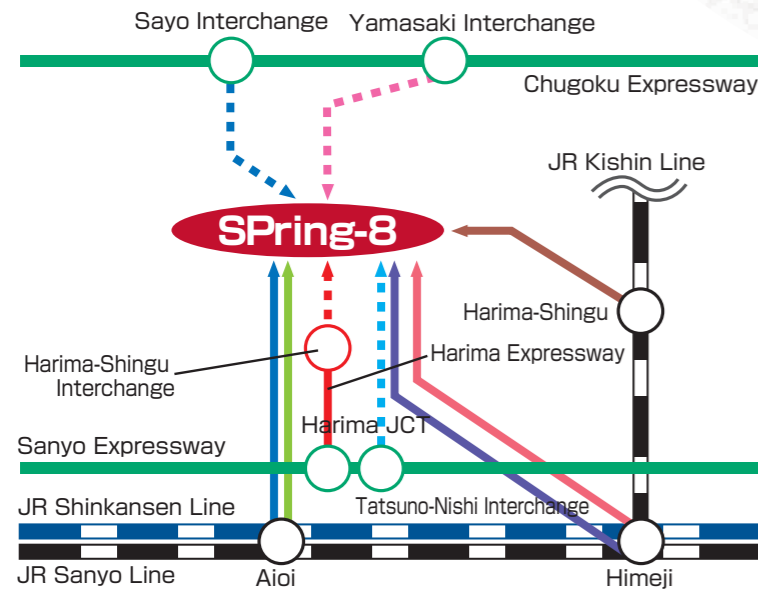
Himeji Castle, also called Shirasagi-jo (White Heron Castle) due to its white outer walls, is located in the center of Himeji City, about 50 kilometers east of SPring-8. It is the best preserved castle in all of Japan, registered on UNESCO's World Heritage list in 1993.



## Synchrotron Radiation Facilities for Public Use in Japan



## Access to SPring-8



- By car from JR stations
- Aioi : 25 minutes
  - Himeji : 55 minutes
  - Harima-Shingu : 20 minutes
- Shinkai Bus
- Aioi : 40 minutes
  - Himeji : 60 minutes
- Chugoku Expressway
- Sayo Interchange : 20 minutes
  - Yamasaki Interchange : 40 minutes
- Sanyo Expressway
- Tatsuno-Nishi Interchange : 25 minutes
- Harima Expressway
- Harima-Shingu Interchange : 5 minutes

## SR Facilities around the World

