

in October 1988, the total number of staff was 66 and the number increased to 220 by April 1, 1995. Then a certain number of the staff started to be transferred from the team to JASRI in preparation for the entrusted missions of the SPring-8. By the time the Project Team was dissolved in 1997, most of the staff had been transferred to JASRI. In

FY2002, the total number of JASRI staff was 498. The total number of SPring-8 staff amounted to 943 when the number of staff at JAERI Kansai Research Establishment and RIKEN Harima Institute is combined with the number of JASRI staff. The numbers of staff by the types and fields of employment are illustrated in Fig. 7.

## Organization and Committees

### SPring-8 Research Complex

As mentioned earlier in the “Budget and Manpower,” the SPring-8 research complex (see Fig. 8) is composed of JAERI Kansai Research Establishment, RIKEN Harima Institute and JASRI (see Fig. 9 - 11), all of which are on site. While JAERI and RIKEN conduct their own research at SPring-8, JASRI is entrusted by the two with the operation, maintenance, improvement, upgrading, R&D and safety management of the SPring-8.

The organization that JASRI has formed to accomplish those missions is shown in Fig. 9. As can be seen from the organization chart, JASRI consists of the Synchrotron Radiation Research Laboratory, the Administration Sector and the SPring-8 Safety Office.

### Synchrotron Radiation Research Laboratory

The Synchrotron Radiation Research Laboratory is divided into five divisions, which are the Accelerator-, Beamline-, Materials Science-, Life and Environmental Science-, and Facilities & Utilities Divisions. The laboratory is responsible for operating, maintaining, and upgrading the accelerator complex and beamlines as well as for carrying out related research activities. It is also responsible for expediting scientific utilization of the facility, supporting the users methodologically



Figure 8

and technologically, establishing a database of scientific and technical information, and keeping the SR community informed about the usage of the beamlines.

### Administration Sector

The Administration Sector is made up of five divisions, which are the General Affairs-, Finance-, Planning-, User Administration- and Public Relations Divisions. The sector is responsible for the planning and coordination of research-related projects of JASRI, financial affairs, overall management, documentation, personnel supervision, welfare programs for JASRI staff, provision of information to the public, beamline management, user support and services and library information management.

## Safety Office

The Safety Office is independent from both the Synchrotron Radiation Research Laboratory and the Administration Sector. It regulates overall safety site-wide such as radiation safety, handling of chemical wastes and biohazards, and environmental preservation.

## SPring-8 Advisory Committee

The SPring-8 Advisory Committee was established on the basis of the “Law regarding Promotion of Common Use of the Synchrotron Radiation Facility (SPring-8).” The committee meets at least twice a year at the request of JASRI to deliberate and makes recommendations on policy making and other important matters such as the acceptance of applications for beam time and subsequent selection of proposals to conduct experiments at the public beamlines. For the purposes, the Proposal Review Committee and the Contract Beamline Committee are sub-structured under this committee.

## Proposal Review Committee

The Proposal Review Committee (PRC) was formed to report to the advisory committee on the review policy, procedures and review results. The PRC has six subcommittees to evaluate proposals in the following disciplines;

- (i) Life Science,
- (ii) Diffraction & Scattering,
- (iii) XAFS,
- (iv) Spectroscopy,
- (v) Method & Instrumentation, and
- (vi) Industrial Use.

In addition to the six subcommittees, a special subcommittee for long-term use was set up and the first special subcommittee was held in April 2000. The members of the PRC are mostly scientists outside the SPring-8 Facility, but one scientist from JASRI must participate in each subcommittee.

## Contract Beamline Committee

This committee deliberates upon the construction of contract beamlines. It first reviews letters of intent submitted by organizations planning to construct their own beamlines and subsequently evaluates formal proposals that are submitted after the approval of letters of intent. Finally the committee reports the results of their evaluations to the SPring-8 Advisory Committee. To date, it has accepted letters of intent from nine organizations to construct eleven contract beamlines in total, and has approved seven proposals so far.

## SPring-8 Three Party Steering Coordination Committee

JAERI, RIKEN and JASRI discuss important matters regarding the effective and efficient management of SPring-8 in this committee.

## Beamline Advisory Committee

The committee is responsible for evaluating the proposals submitted for public beamline construction. The committee first reviews the letters of intent submitted, and will deliberate the proposals on the basis of scientific feasibility and impact on the corresponding field of science. It reports the review results to the JAERI-RIKEN-JASRI Steering Coordination Committee.

## Committee of R&D on Advanced Technology and Applications

This committee promotes and enhances the in-house research program known as the R&D Project on Advanced Technology and Applications, which are to be carried out in collaboration among JAERI, RIKEN and JASRI.

## R&D Beamline Program Committee

At the R&D beamlines, 30% of the beam time is reserved for public use and the remaining 70% is allocated to JAERI, RIKEN and JASRI. The R&D Beamline Program Committee was established to coordinate the management of R&D beamlines.

# SPring-8 Organization

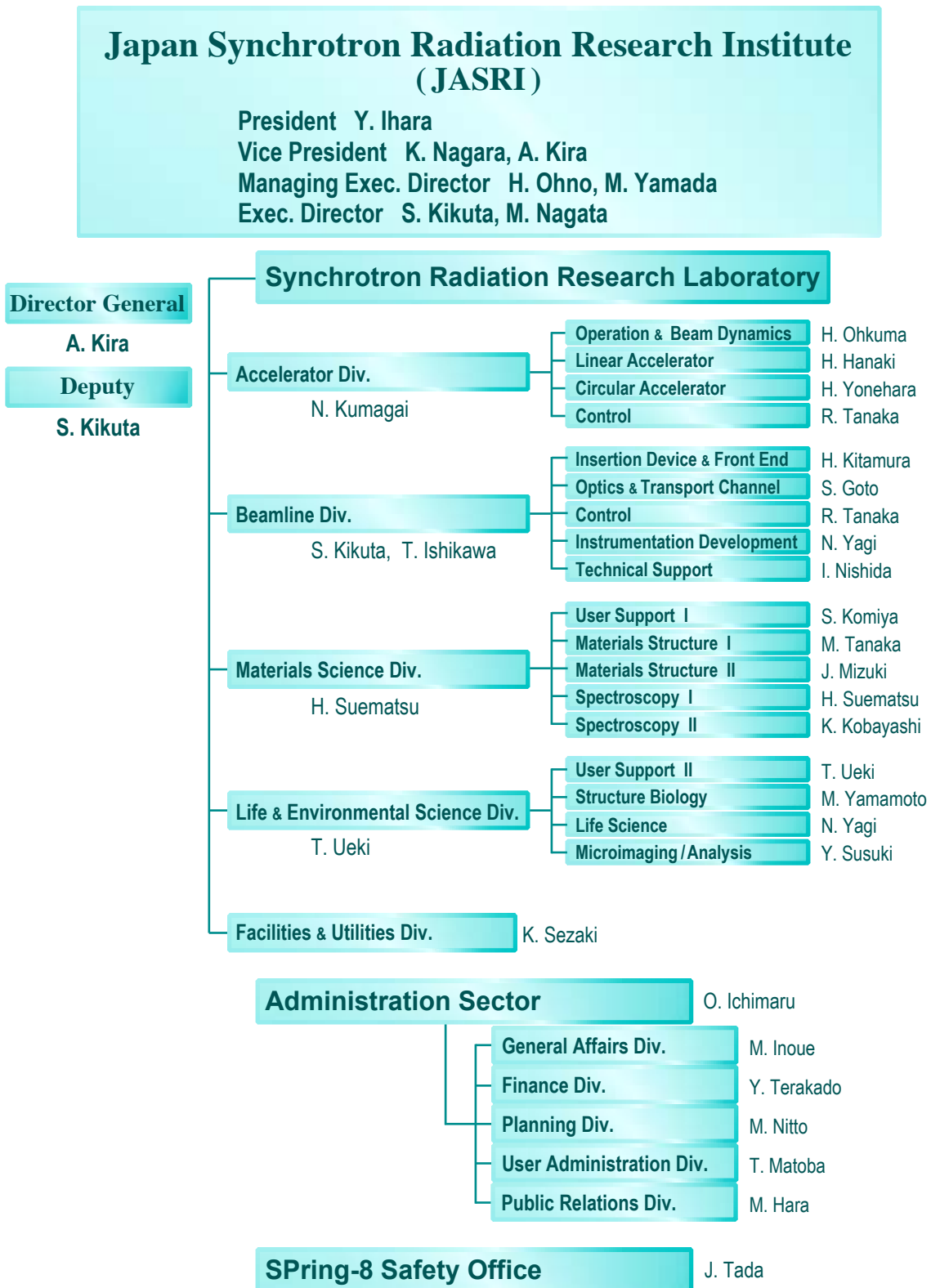


Figure 9

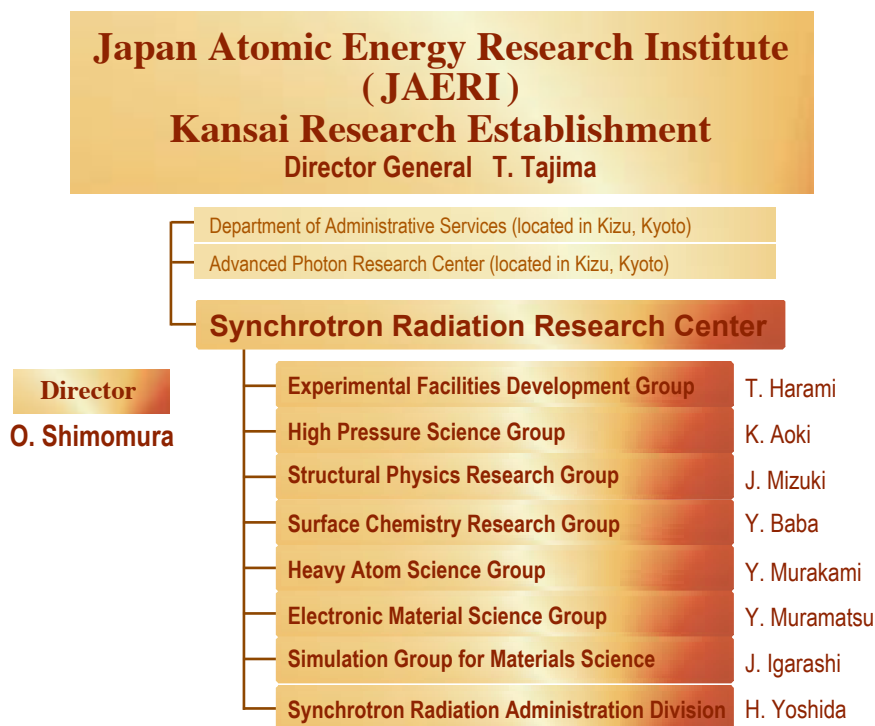


Figure 10



Figure 11