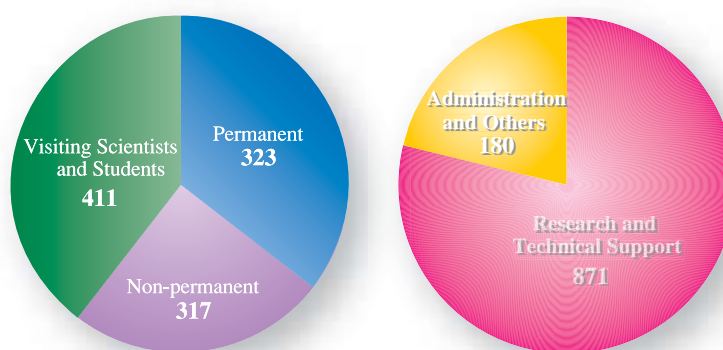


operation, maintenance, improvement, upgrading, R&D and safety management of SPring-8 as well as the technical support for the new beamline construction since the construction of main facilities and buildings at SPring-8 was completed and the public use started in 1997.

About 94% of the total budget of JASRI comes from the Government through JAERI and RIKEN to be appropriated for the above-mentioned missions of JASRI and the remaining 6% comes directly from the Government in the form of a grant for user support. Figure 6 illustrates the budget at SPring-8. It shows that the total budget for JASRI for FY2003 was 10,516 million yen and the total budgets for JAERI and

RIKEN were 527 million yen and 2,223 million yen, respectively. As can be seen from the figure, the budgets for JAERI and RIKEN have reduced since FY2001. It is because the construction such as utility facilities is approaching completion, meanwhile construction of beamlines is stopped due to lack of budget.

In FY2002, the total number of JASRI staff was 463. The total number of SPring-8 staff amounts to 1,051 when the number of staff at JAERI Kansai Research Establishment and RIKEN Harima Institute is combined with the number of JASRI staff. The numbers of staff by the types and fields of employment are illustrated in Fig. 7.



	by Type			by Field		Total
	Permanent	Non-permanent	Visiting Scientists and Students	Research and Technical Support	Administration and Others	
JASRI	220	128	115	327	136	463
JAERI	42	26	7	67	8	75
RIKEN	61	163	289	477	36	513
	323	317	411	871	180	1,051

Fig. 7. Manpower at SPring-8: JASRI, JAERI, RIKEN (FY2003)

Organization

As mentioned earlier in the Budget and Manpower, the SPring-8 research complex is composed of JASRI, JAERI Kansai Research Establishment and RIKEN Harima Institute (see the organization charts Fig. 8 - 10), all of which are on site. While JAERI and RIKEN conduct their own research at SPring-8, JASRI is entrusted by the two with the operation, maintenance, improvement, upgrading, R&D and safety management

of SPring-8. Since SPring-8 is a facility open to the public, user support is also one of the important tasks of JASRI. The organization that JASRI has formed to accomplish those missions is shown in Fig. 8. As can be seen from the organization chart, JASRI consists of the Synchrotron Radiation Research Laboratory, the Administration Sector and the SPring-8 Safety Office.

SPring-8 Organization

Japan Synchrotron Radiation Research Institute (JASRI)

President Y. Ihara
 Vice President K. Nagara, A. Kira
 Managing Exec. Director H. Ohno, M. Yamada
 Exec. Director S. Kikuta, M. Nagata

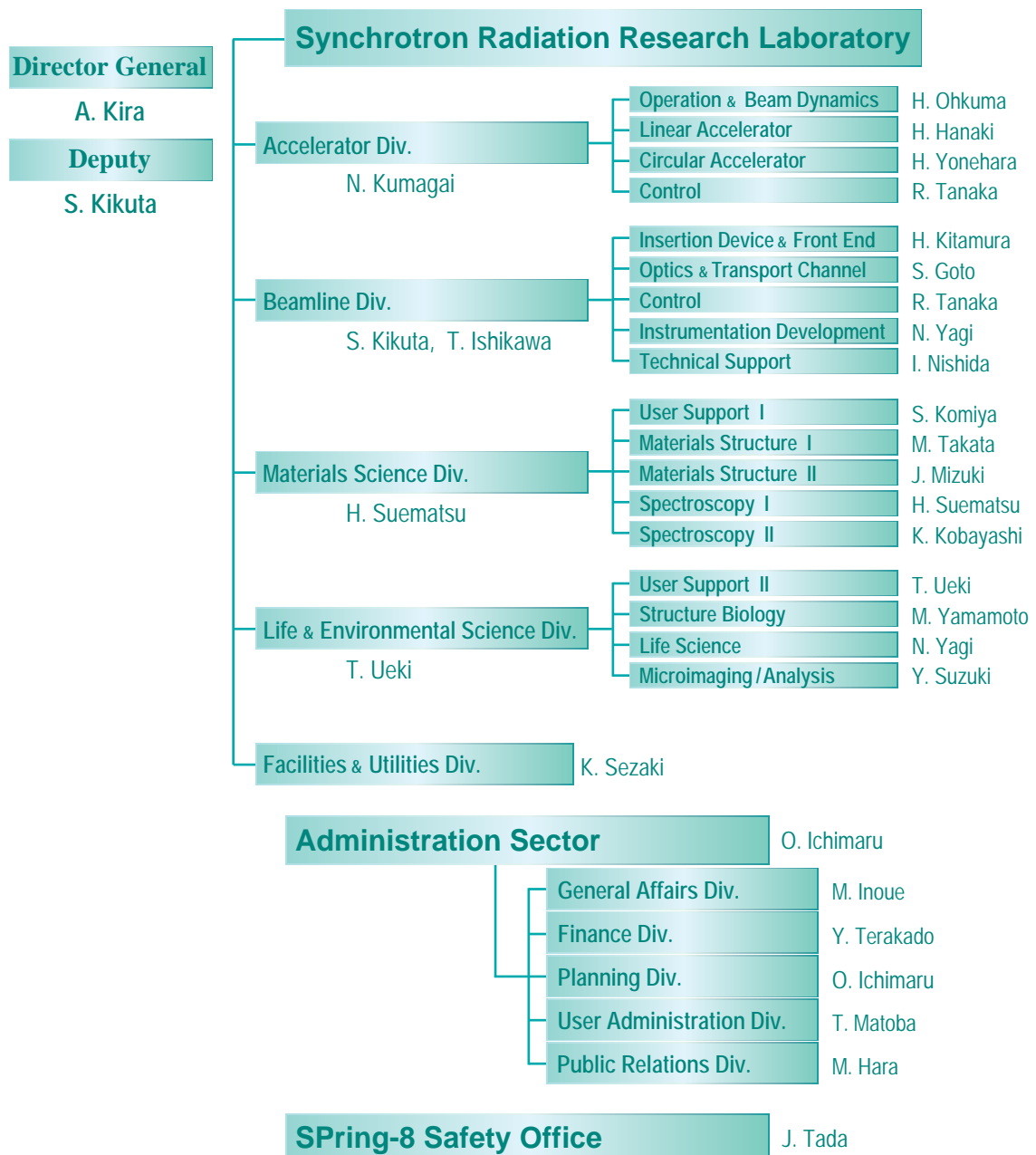


Figure 8

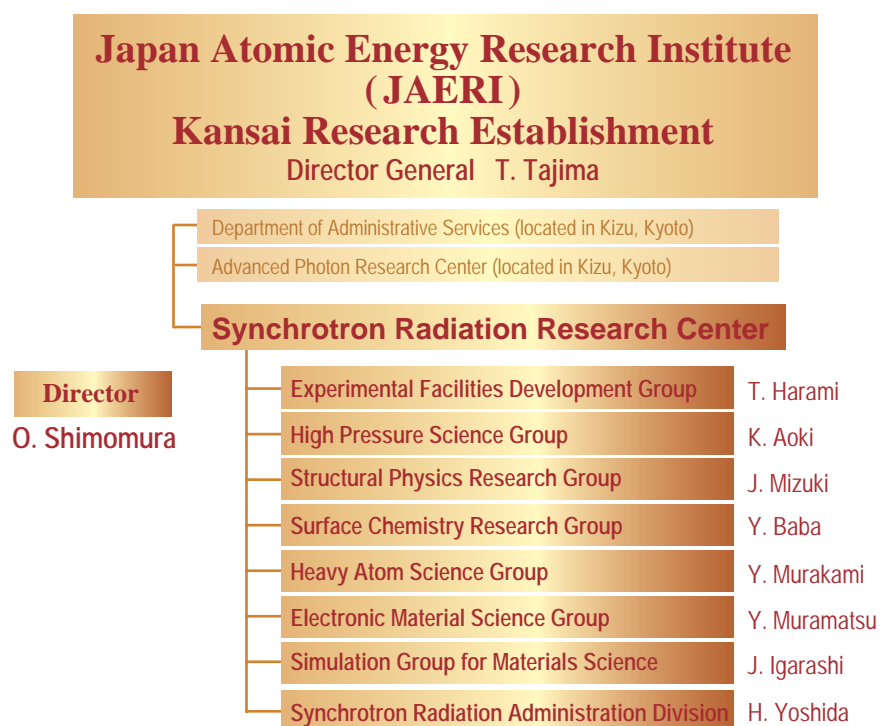


Figure 9



Figure 10