

facilities and buildings at SPring-8 was completed and public use started in 1997.

About 87% of the total budget of JASRI comes from the Government through JAERI and RIKEN and is appropriated for the above-mentioned missions of JASRI. The remaining 13% comes directly from the Government in the form of grants for user support. Figure 6 illustrates the budget at SPring-8. It shows that the total budget for JASRI for FY2004 was 10 billion 556 million yen and the total budgets for JAERI and RIKEN were 888 million yen and 2 billion 587 million yen, respectively. As can be seen from the figure, the budgets for JAERI and RIKEN have been reduced since FY2001 because the construction such as of utility facilities is approaching completion. Meanwhile, construction of beamlines has been halted due to lack of budget.

In FY2004, the total number of JASRI staff members was 488. The total number of SPring-8 staff members amounts to 1,099 when staff at JAERI Kansai Research Establishment and RIKEN Harima Institute is combined with the JASRI staff. The breakdown of the staff according to the types and fields of employment is shown in Fig. 7.

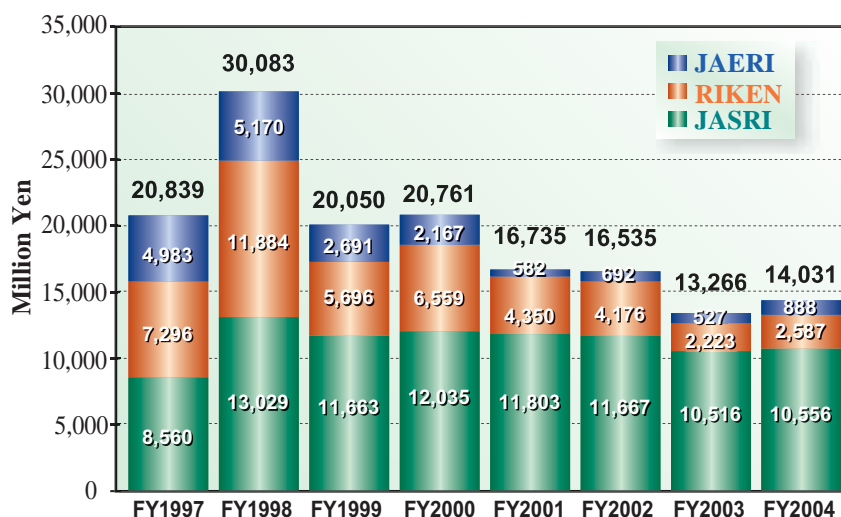
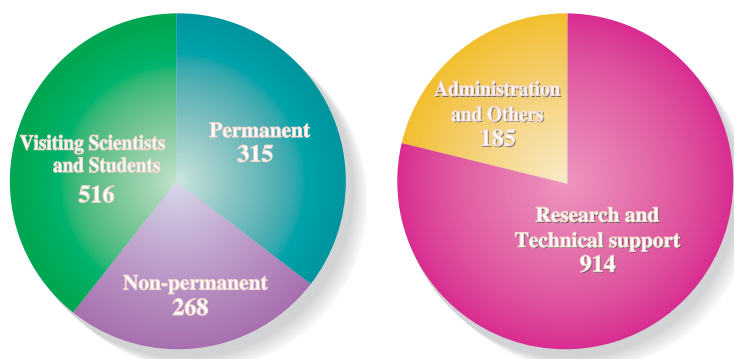


Fig. 6. Budget at SPring-8: JASRI, JAERI and RIKEN.



	by Type			by Field		Total
	Permanent	Non-permanent	Visiting Scientists and Students	Research and Technical Support	Administration and Others	
JASRI	219	130	139	349	139	488
JAERI	34	20	9	54	9	63
RIKEN	62	118	368	511	37	548
	315	268	516	914	185	1,099

Fig. 7. Manpower at SPring-8: JASRI, JAERI and RIKEN (FY2004).

Organization

As mentioned earlier in the Budget and Manpower, the SPring-8 research complex comprises JASRI, JAERI Kansai Research Establishment and RIKEN Harima Institute, all of which are on site. While JAERI and RIKEN conduct their own research at SPring-8, JASRI is entrusted by the two with the operation, maintenance, improvement, upgrading, R&D and

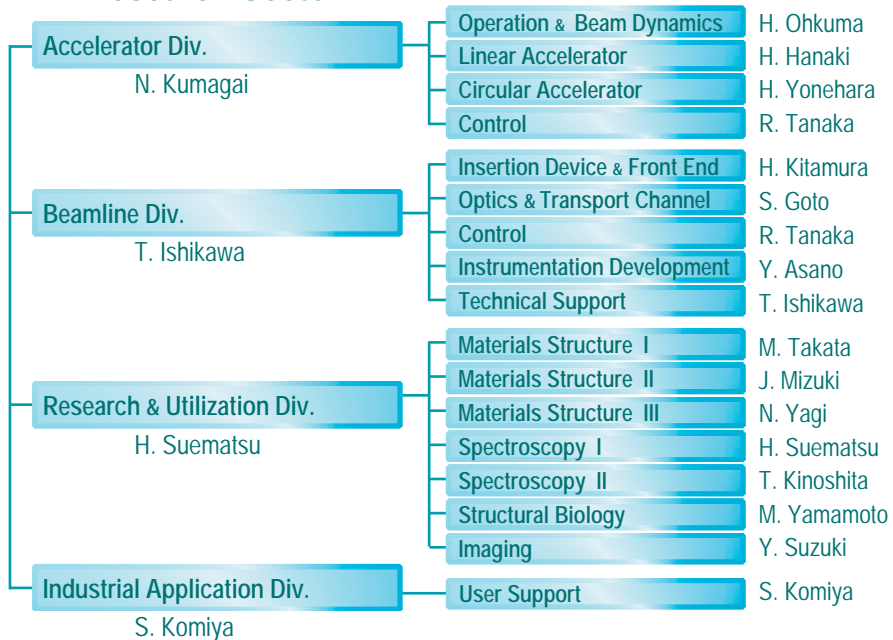
safety management of SPring-8. Since SPring-8 is a facility open to the public, user support is also an important task of JASRI. The organization that JASRI has formed to accomplish these missions is shown in Fig. 8. The organizations of JAERI and RIKEN are shown in Fig. 9 and Fig. 10, respectively.

SPring-8 Organization

Japan Synchrotron Radiation Research Institute (JASRI)

Director General A. Kira
 Senior Exec. Director H. Ohno
 Managing Exec. Director M. Yamada, M. Nagata, M. Hattori
 Administrative Consultant O. Shimomura

Research Sector



Administration Sector



Safety



Figure 8

April, 2005.

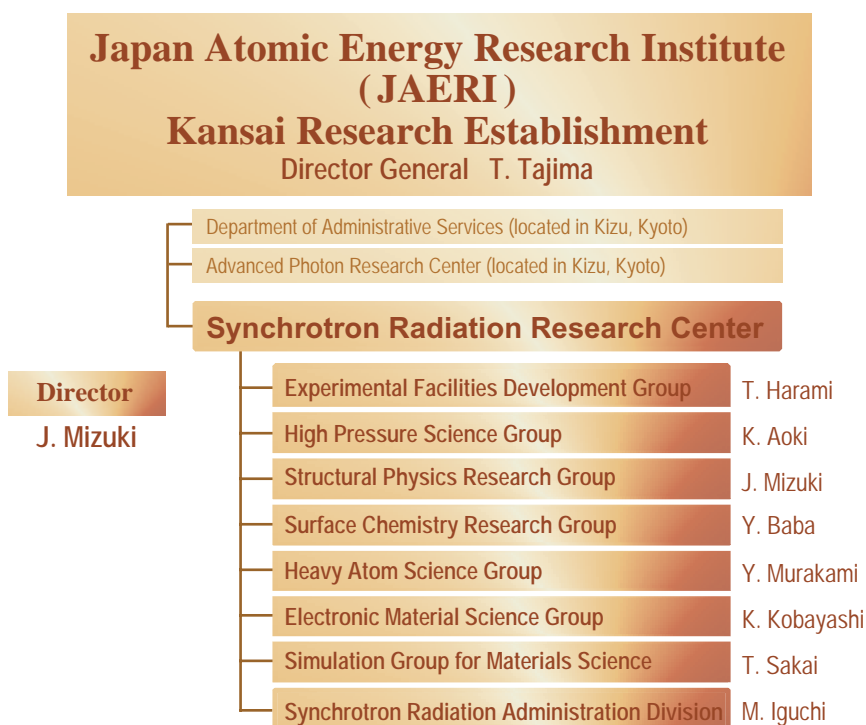


Figure 9



Figure 10