

Organization

The SPring-8 research complex is composed of JASRI, JAEA Synchrotron Radiation Research Center, and RIKEN Harima Institute, all of which are on site. Research activity of JAEA stays intact at SPring-8, although it has administratively withdrawn from SPring-8 management. As mentioned before, JASRI is entrusted by RIKEN with the operation

maintenance, improvement, upgrading, R&D and safety management of SPring-8. Since SPring-8 is a facility open to the public, user support is also one of the important tasks of JASRI. The organization that JASRI has formed to accomplish those missions is shown in Fig. 10. Organization of JAEA and RIKEN are shown in Fig. 11 and Fig. 12, respectively.

April, 2005.

**Japan Synchrotron Radiation Research Institute
(JASRI)**

Director General A. Kira
Senior Exec. Director H. Ohno
Managing Exec. Director M. Yamada, M. Nagata, M. Hattori
Administration Consultant O. Shimomura



Figure 10

April, 2005.

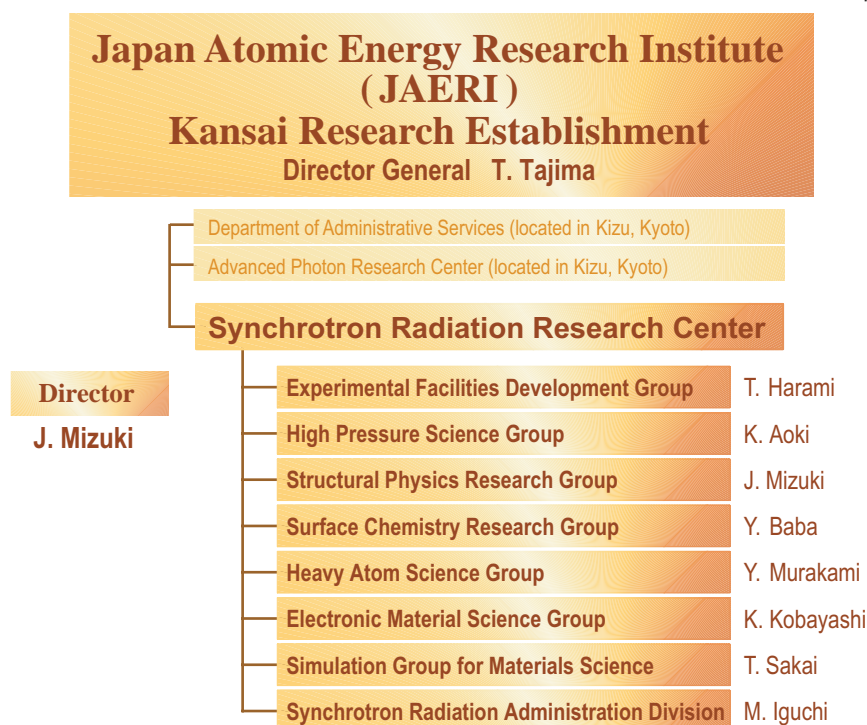


Figure 11



Figure 12