

Research Complex

As a center of excellence, SPring-8, XFEL, SCSS, and New SUBARU form a research complex for synchrotron radiation science and technology, being composed of JASRI, the RIKEN Harima Institute, and the JAEA Synchrotron Radiation Research Center, Laboratory of Advanced Science and Technology for

Industry, together with various universities and institutes, as illustrated in Fig. 11. The two major bodies of the COE are the RIKEN Harima Institute and JASRI, the organization charts of which are shown in Fig. 12 and Fig. 13, respectively.

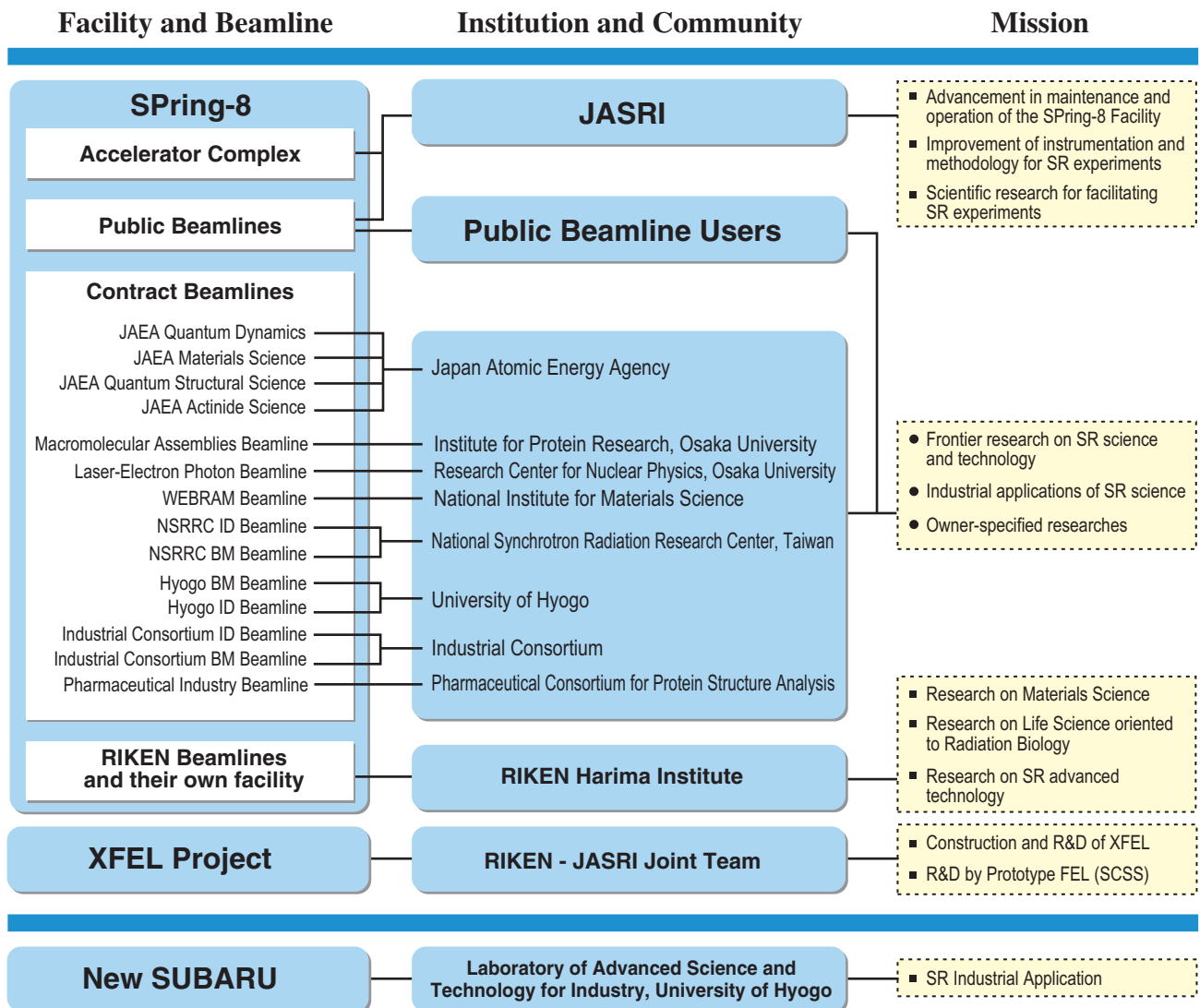


Fig. 11. SPring-8 research complex.

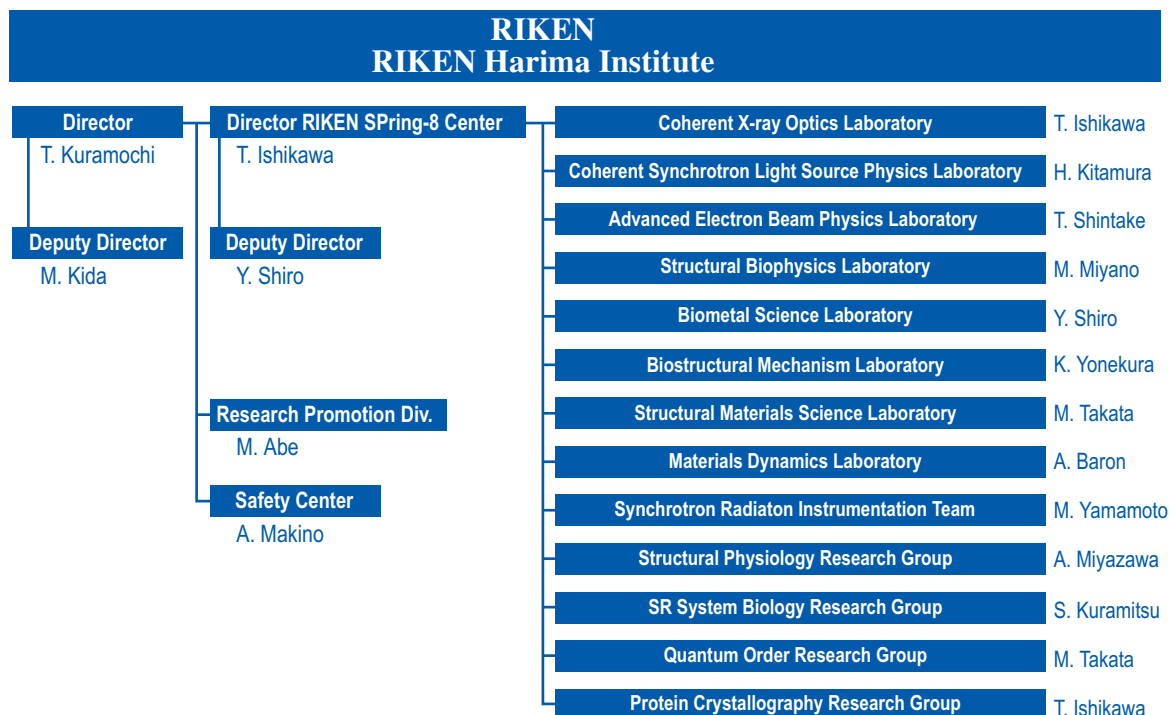


Figure 12

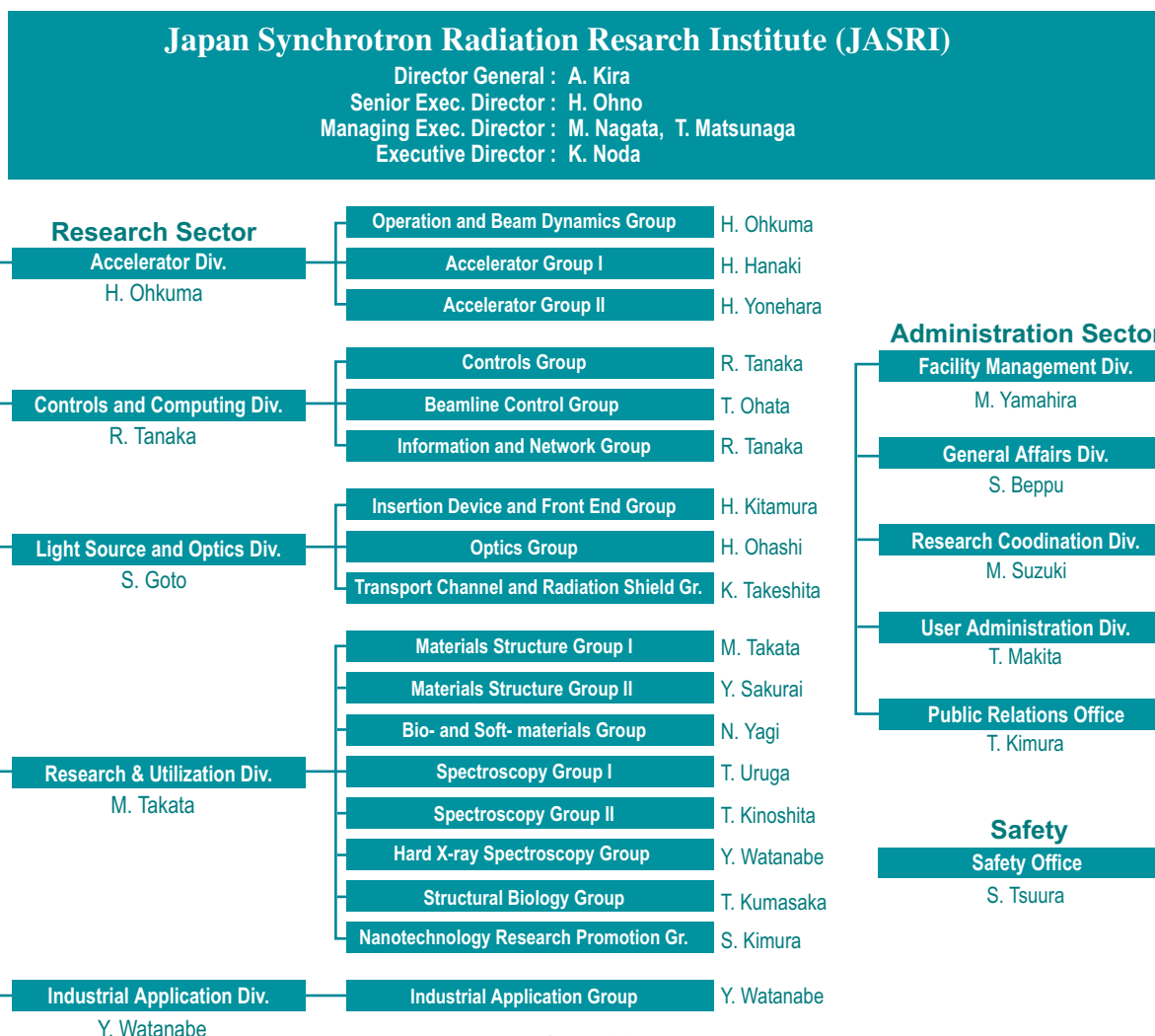


Figure 13