

### IV-5. Research Outcome

When users conduct non-proprietary experiments, they are required to submit the SPring-8 Experiment Report to JASRI within 60 days of the completion of their experiments. When the research results obtained through the use of the SPring-8 are published in academic journals and other publications, the project leaders are requested to report to JASRI.

As of March 2009, the number of registered refereed papers is 4,447: out of which, 3,505 papers resulted from the use of public beamline, 685 papers from that of contract beamlines, 668 papers from that of RIKEN beamlines, and 321 papers from hardware/software R&D. The papers resulting from the use of two or more beamlines are counted at each beamline. Figure 6 shows the annual statistics of refereed papers.

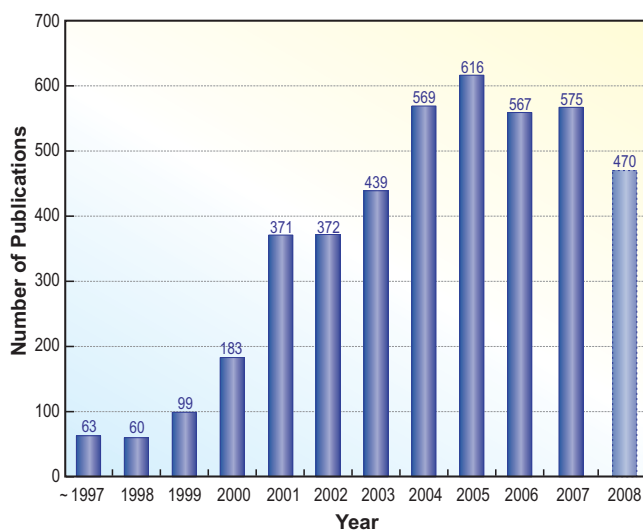


Fig. 6. Number of refereed publications as of March 2009.

## V. Budget and Personnel

Since the start of operation in 1997, the SPring-8 had been jointly managed by RIKEN, JAERI (JAEA, as it is known today), and JASRI. Since JAERI withdrew from the management of the SPring-8 on September 30, 2005, the SPring-8 has been administered by RIKEN and JASRI in a unified manner.

The following figure (Fig. 7) shows the annual budget allocated to the operation, maintenance, and promotion of the use of the SPring-8 from FY1997 to date. The budget for FY2008 is 8.96 billion yen. The total number of staff of JASRI, RIKEN and XFEL project amounts to 1,225 as of October 2008 as shown in Fig. 8.

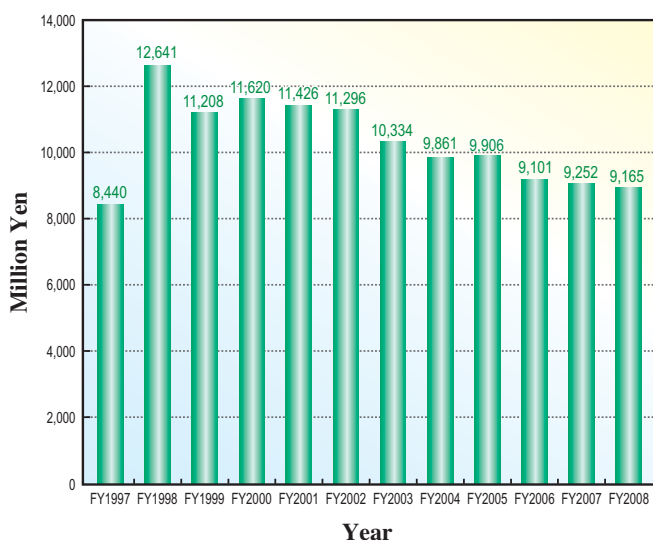
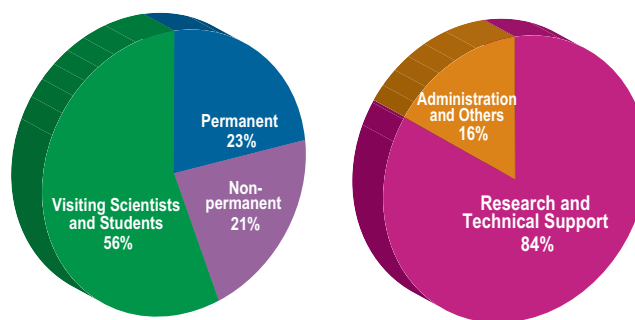


Fig. 7. SPring-8 budget.



	by Type			by Field		Total
	Permanent	Non-permanent	Visiting Scientists and Students	Research and Technical Support	Administration and Others	
<b>JASRI</b>	234	142	147	374	149	<b>523</b>
<b>RIKEN</b>	52	84	466	562	40	<b>602</b>
<b>XFEL</b>	1	35	72	102	6	<b>108</b>
	<b>287</b>	<b>261</b>	<b>685</b>	<b>1038</b>	<b>195</b>	<b>1233</b>

Fig. 8. Personnel at SPring-8: JASRI, RIKEN and XFEL (FY2008).