

VI. Research Complex

The facilities of the SPring-8, XFEL and NewSUBARU are forming a center-of-excellence at the SPring-8 campus, where JASRI, public beamline users, contractors of contract beamlines, RIKEN, and the University of Hyogo work in close cooperation to form a research complex playing their own roles to deliver high-quality results in

the field of synchrotron radiation science and technology. Figure 9 shows the SPring-8 research complex and the operational and management of each research facility. The organizational charts of RIKEN and JASRI, which form the kernel of this research complex, are shown in Fig. 10 and Fig. 11, respectively.

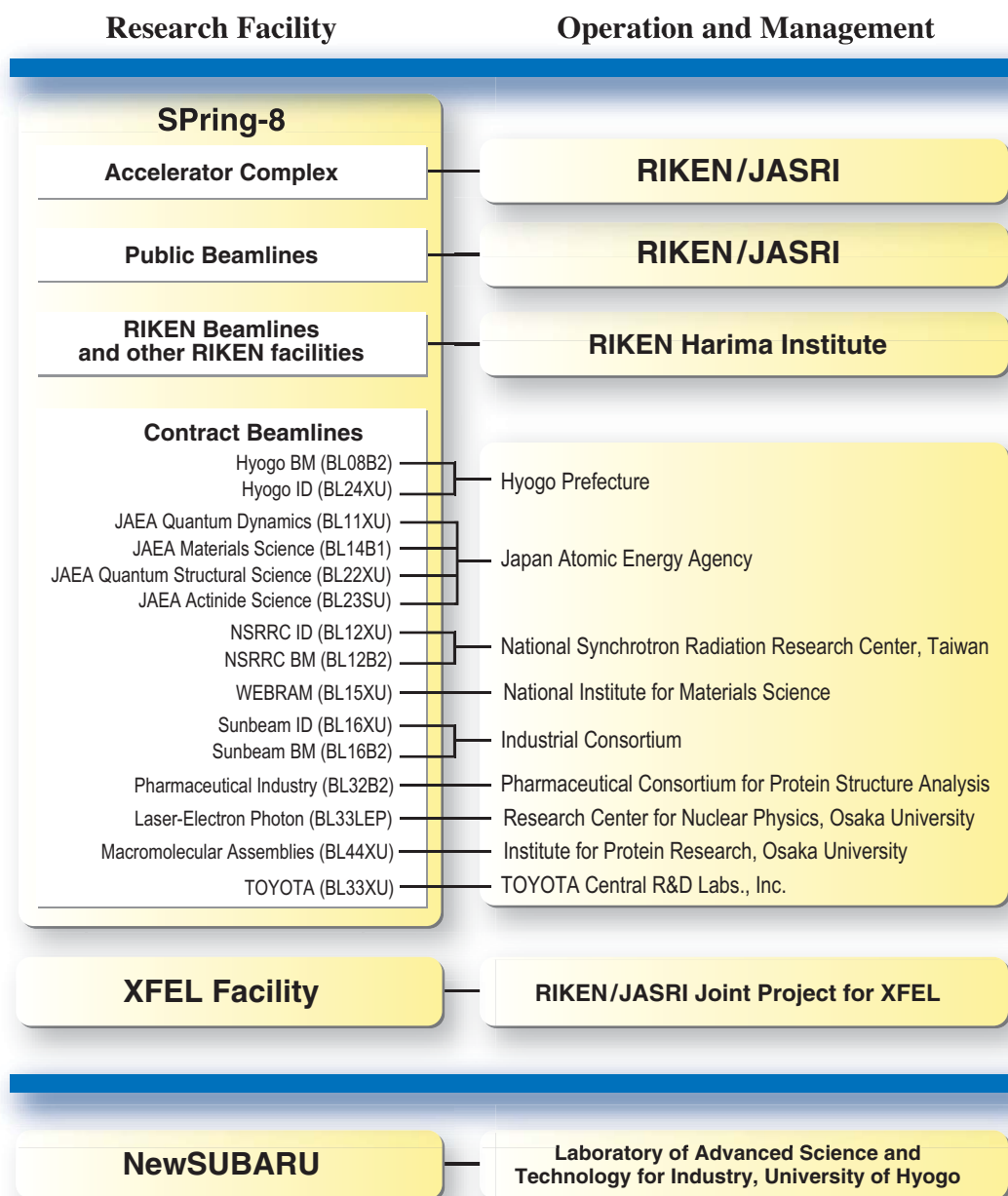


Fig. 9. SPring-8 research complex.

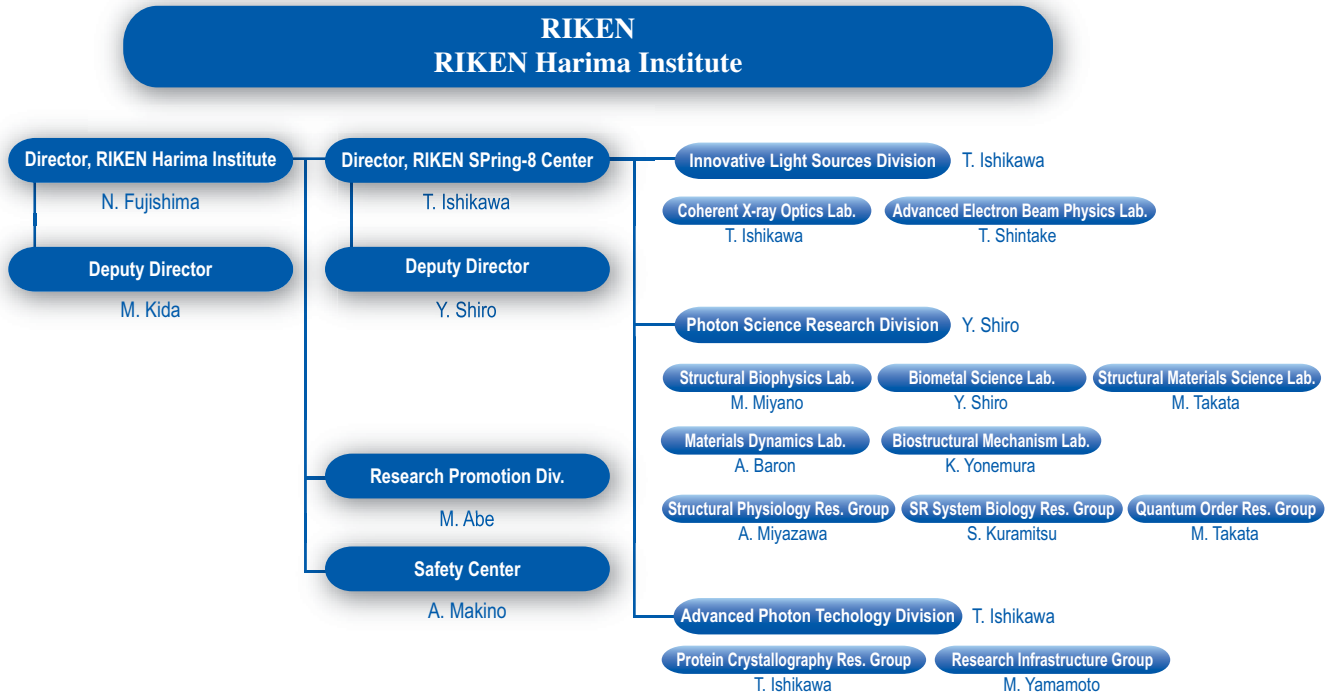


Fig. 10. RIKEN Harima chart as of April 2009.

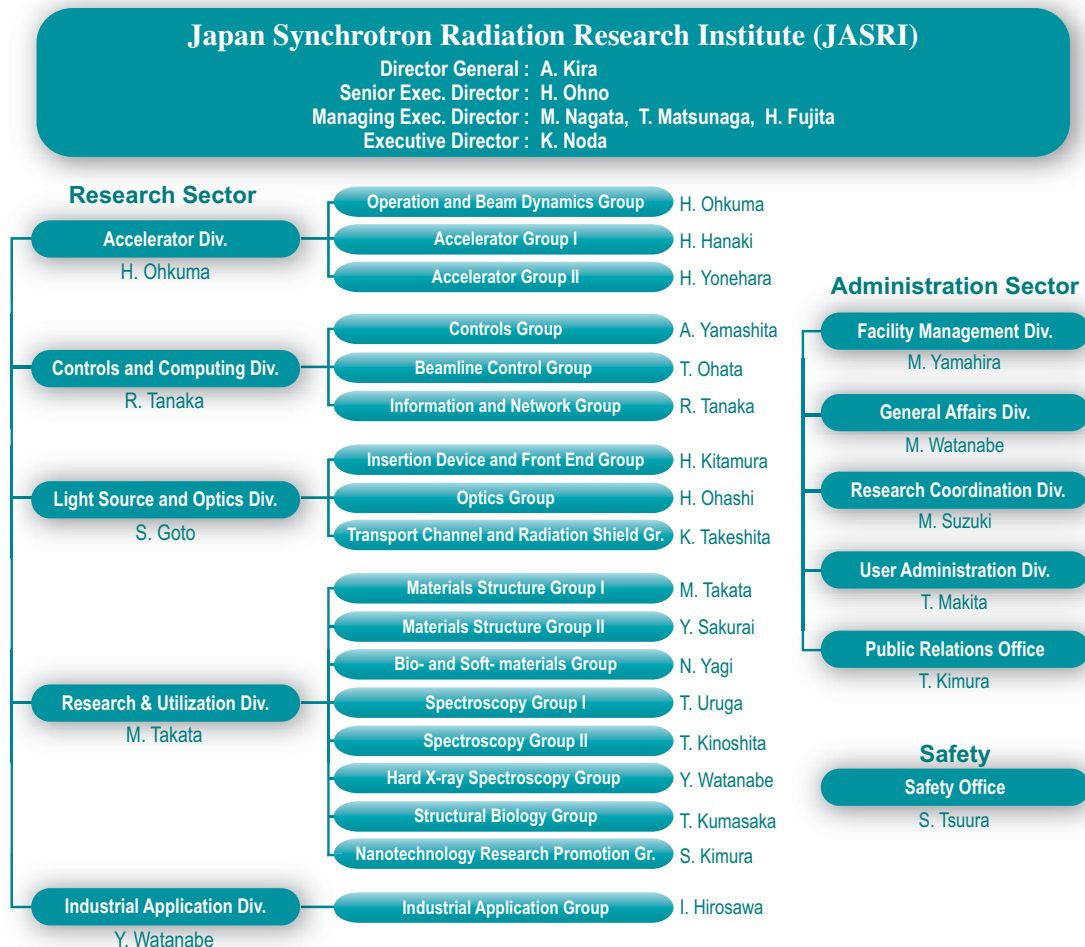


Fig. 11. JASRI chart as of April 2009.