

VI. Research Complex

The facilities of SPring-8, XFEL and NewSUBARU form a center of excellence at the SPring-8 campus, where JASRI, public beamline users, contractors of contract beamlines, RIKEN, and the University of Hyogo work in close cooperation to form a research complex by playing their own roles to deliver high-quality results

in the field of synchrotron radiation science and technology. Figure 9 shows the SPring-8 research complex and the operation and management of each research facility. The organizational charts of RIKEN and JASRI, which form the kernel of this research complex, are shown in Fig. 10 and Fig. 11, respectively.

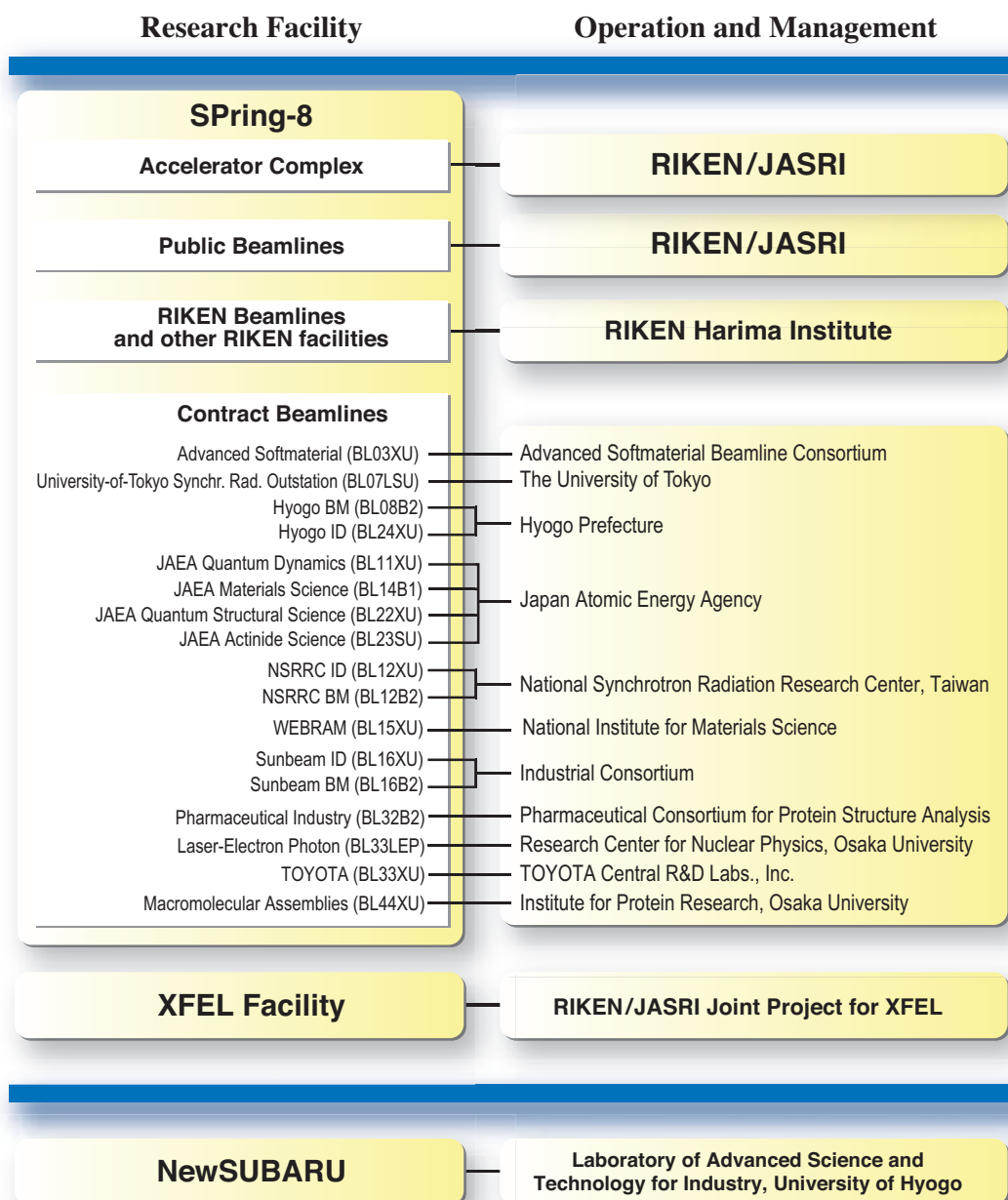


Fig. 9. SPring-8 research complex.

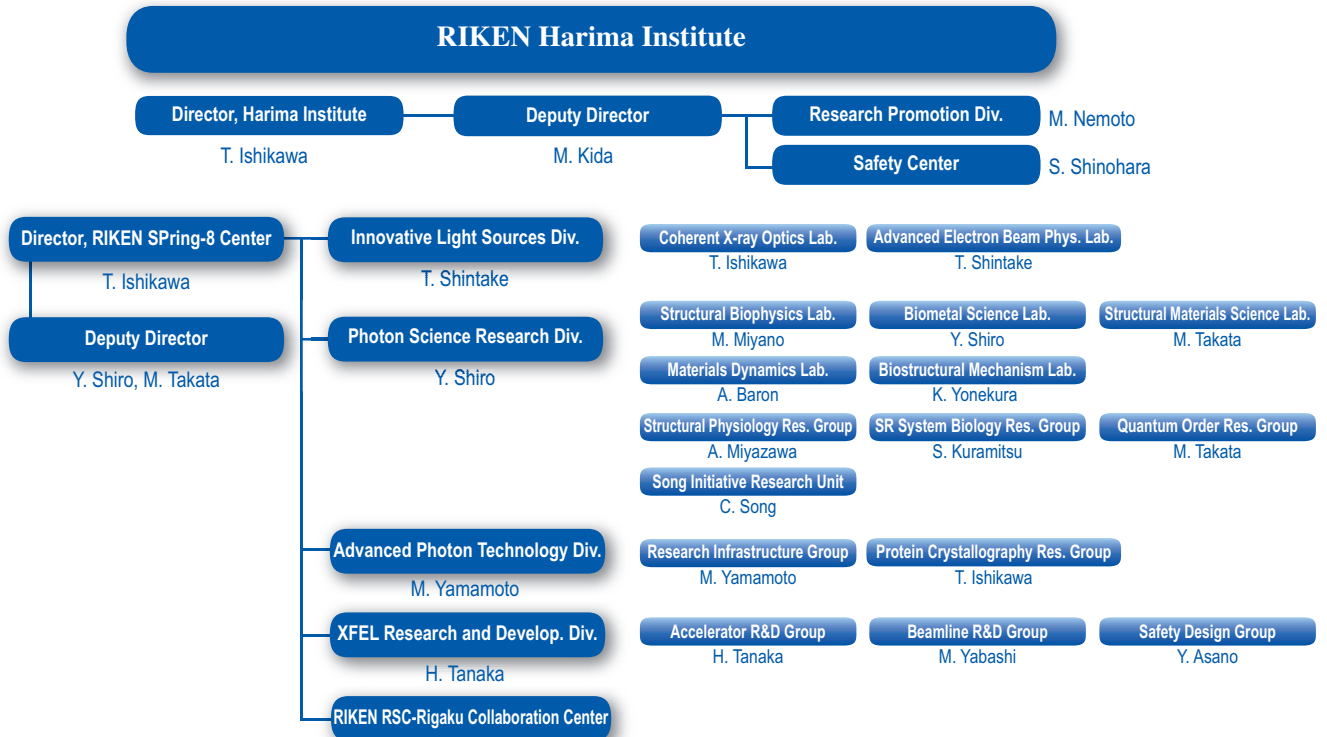


Fig. 10. RIKEN Harima chart as of April 2011.

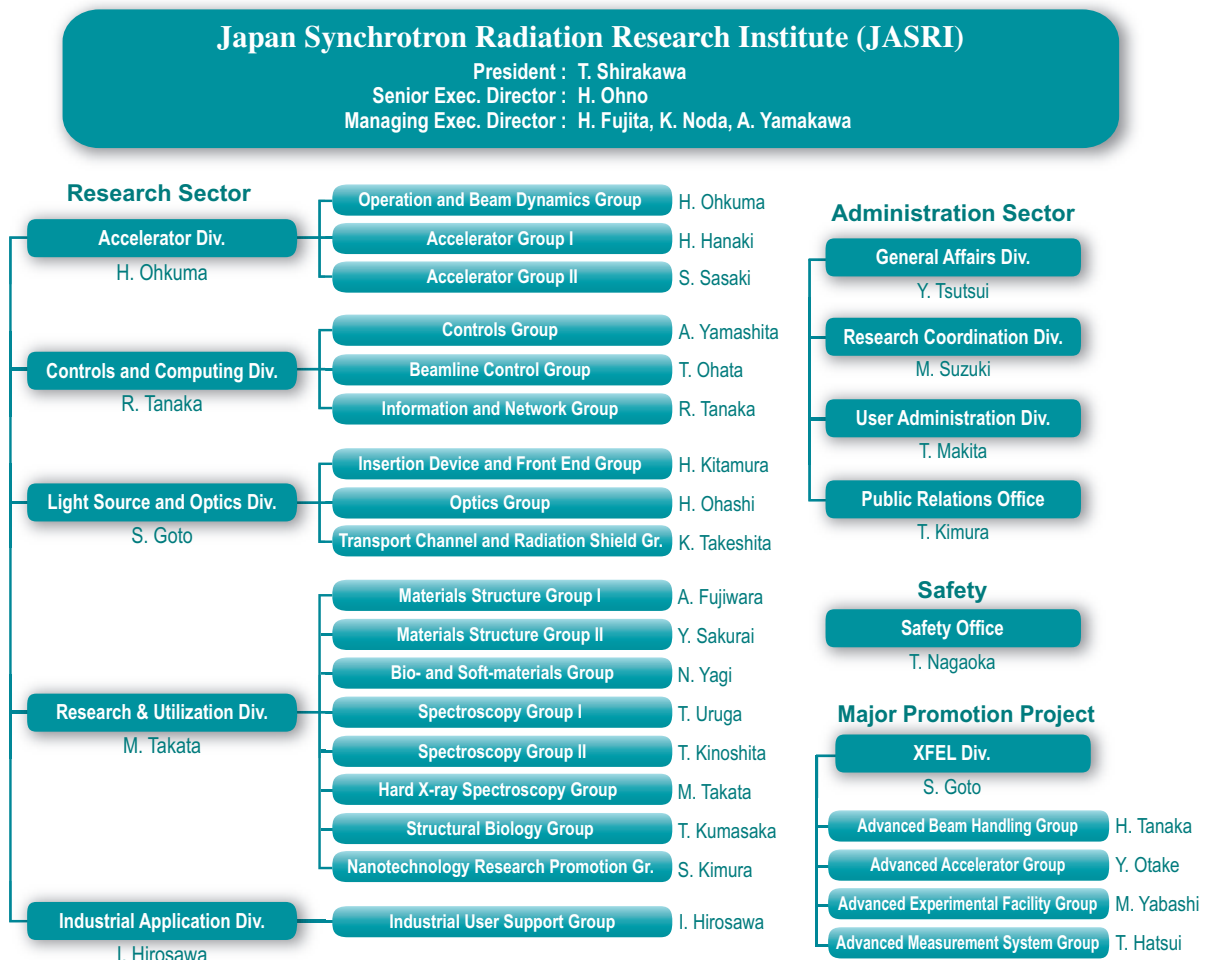


Fig. 11. JASRI chart as of April 2011.