

## IV. User Program and Statistics

JASRI calls for public use proposals twice a year. The submitted proposals are reviewed by the Proposal Review Committee (PRC). As for General Proposals, 464 proposals out of the 673 submitted proposals were approved in the research term 2010B, and 414 out of the 597 submitted proposals were approved in 2011A. Since the start of the Long-term Program in 2000B, 34 Long-term Proposals have been implemented, that is, 11 and 12 proposals were carried out in 2010B and 2011A, which include 1 and 3 proposals newly approved. As for Priority Field Proposals, Nanotechnology Support Proposals and Industrial Application Proposals were called for in 2010B and 2011A. Out of the 217 submitted proposals, 148 proposals were approved in 2010B, and 119 out of the 194 submitted proposals were approved in 2011A. The proposal statistics are shown in Table IV for the period from 1997B to 2011A; Power User Proposals and JASRI Proposals are excluded. During the period from 2003B to 2011A, 18 user groups were designated as Power User groups (PUs), which include 8 PUs active in 2011A. To date, a total of 4122 shifts have been used by PUs, 729 shifts of which were spent from 2010B to 2011A. In particular, 104 proposals were approved as the "Affected Facilities Support Proposals" in 2011A.

SPring-8 consistently provided 2,094 hours of user beamtime in 2010B and 2,131 hours in 2011A. Since the start of operation in 1997, SPring-8 has succeeded

in providing users with a total beamtime of 53,214 hours. In 2010B, 1,069 experiments were conducted by 7,684 users at public and contract beamlines, and 1,049 experiments by 7,413 users in 2011A. From the start of operation in 1997 to 2011A, a total of 19,440 experiments were conducted by 132,132 users.

The beamtime available to the users, the number of experiments conducted, and the number of user visits at the public and contract beamlines are summarized in Table V and in Fig. 3.

Figure 4 shows the breakdown of the approved proposals sorted by user affiliation and of the number of experiments conducted at the public and contract beamlines from 1997B to 2011A. The percentages of experiments conducted by users from abroad were 5.8% in 2010B and 6.7% in 2011A.

For the promotion of Industrial Application at SPring-8, the Industrial Application Division was established in 2005. With consultation support for new users given by the division's coordinators, currently, Industrial Application Proposals account for approximately 20% of the total number of proposals conducted at the public beamlines. In addition, the Measurement Service has been introduced since 2007B, in which the personnel of the Industrial Application Division carries out XAFS measurements on behalf of users at BL14B2. SPring-8 has also launched the Mail-in Protein Crystallography Data Collection at BL38B1 and the powder X-ray diffraction Measurement Service at BL19B2 since 2009B.

Table IV. Numbers of submitted proposals and approved proposals by research term

Research Term	Beamtime (shifts)	Deadline	Submitted proposals	Approved proposals
1997B: 1997.10 - 1998.03	168	1997.1.10	198	134
1998A: 1998.04 - 1998.10	204	1998.1.6	305	229
1999A: 1998.11 - 1999.06	250	1998.7.12	392	258
1999B: 1999.09 - 1999.12	140	1999.6.19	431	246
2000A: 2000.02 - 2000.06	204	1999.10.16	424	326
2000B: 2000.10 - 2001.01	156	2000.6.17	582	380
2001A: 2001.02 - 2001.06	238	2000.10.21	502	409
2001B: 2001.09 - 2002.02	190	2001.5.26	619	457
2002A: 2002.02 - 2002.07	226	2001.10.27	643	520
2002B: 2002.09 - 2003.02	190	2002.6.3	751	472
2003A: 2003.02 - 2003.07	228	2002.10.28	733	563
2003B: 2003.09 - 2004.02	202	2003.6.16	938	621
2004A: 2004.02 - 2004.07	211	2003.11.4	772	595
2004B: 2004.09 - 2004.12	203	2004.6.9	886	562
2005A: 2005.04 - 2005.08	188	2005.1.5	878	547
2005B: 2005.09 - 2005.12	182	2005.6.7	973	624
2006A: 2006.03 - 2006.07	220	2005.11.15	916	699
2006B: 2006.09 - 2006.12	159	2006.5.25	867	555
2007A: 2007.03 - 2007.07	246	2006.11.16	1099	761
2007B: 2007.09 - 2008.02	216	2007.6.7	1007	721
2008A: 2008.04 - 2008.07	225	2007.12.13	1009	749
2008B: 2008.10 - 2009.03	189	2008.6.26	1163	659
2009A: 2009.04 - 2009.07	195	2008.12.11	979	654
2009B: 2009.10 - 2010.02	210	2009.6.25	1076	709
2010A: 2010.04 - 2010.07	201	2009.12.17	919	665
2010B: 2010.10 - 2011.02	210	2010.7.1	1022	728
2011A: 2011.04 - 2011.07	215	2010.12.9	1024	731

Notes  
 1997B-2006B: The number of proposals are indicated as of submission deadline.  
 After 2007A: The total number of proposals are indicated.  
 The number of long-term proposals are counted by beamline, that is, if the project leader uses two beamlines, it is counted as two proposals.

Table V. Numbers of experiments and users at public and contract beamlines (by research term)

Research Term	User time (hours)	Public BL		Contract BL	
		Experiments	Users	Experiments	Users
1997B: 1997.10 - 1998.03	1,286	94	681	-	-
1998A: 1998.04 - 1998.10	1,702	234	1,252	7	-
1999A: 1998.11 - 1999.06	2,585	274	1,542	33	467
1999B: 1999.09 - 1999.12	1,371	242	1,631	65	427
2000A: 2000.02 - 2000.06	2,051	365	2,486	100	794
2000B: 2000.10 - 2001.01	1,522	383	2,370	88	620
2001A: 2001.02 - 2001.06	2,313	474	2,915	102	766
2001B: 2001.09 - 2002.02	1,867	488	3,277	114	977
2002A: 2002.02 - 2002.07	2,093	545	3,246	110	1,043
2002B: 2002.09 - 2003.02	1,867	540	3,508	142	1,046
2003A: 2003.02 - 2003.07	2,246	634	3,777	164	1,347
2003B: 2003.09 - 2004.02	1,844	549	3,428	154	1,264
2004A: 2004.02 - 2004.07	2,095	569	3,756	161	1,269
2004B: 2004.09 - 2004.12	1,971	555	3,546	146	1,154
2005A: 2005.04 - 2005.08	1,880	560	3,741	146	1,185
2005B: 2005.09 - 2005.12	1,818	620	4,032	187	1,379
2006A: 2006.03 - 2006.07	2,202	724	4,809	226	1,831
2006B: 2006.09 - 2006.12	1,587	550	3,513	199	1,487
2007A: 2007.03 - 2007.07	2,448	781	4,999	260	2,282
2007B: 2007.09 - 2008.02	2,140	739	4,814	226	1,938
2008A: 2008.04 - 2008.07	2,231	769	4,840	232	1,891
2008B: 2008.10 - 2009.03	1,879	672	4,325	217	1,630
2009A: 2009.04 - 2009.07	1,927	669	4,240	238	1,761
2009B: 2009.10 - 2010.02	2,087	722	4,793	275	2,144
2010A: 2010.04 - 2010.07	1,977	685	4,329	293	2,483
2010B: 2010.10 - 2011.02	2,094	744	4,872	325	2,812
2011A: 2011.04 - 2011.07	2,131	740	4,640	309	2,773
	53,214	14,921	95,362	4,519	36,770

Notes  
 The number of long-term proposals are counted by beamline, that is, if two beamlines were used for one experiment, those are counted as two experiments.

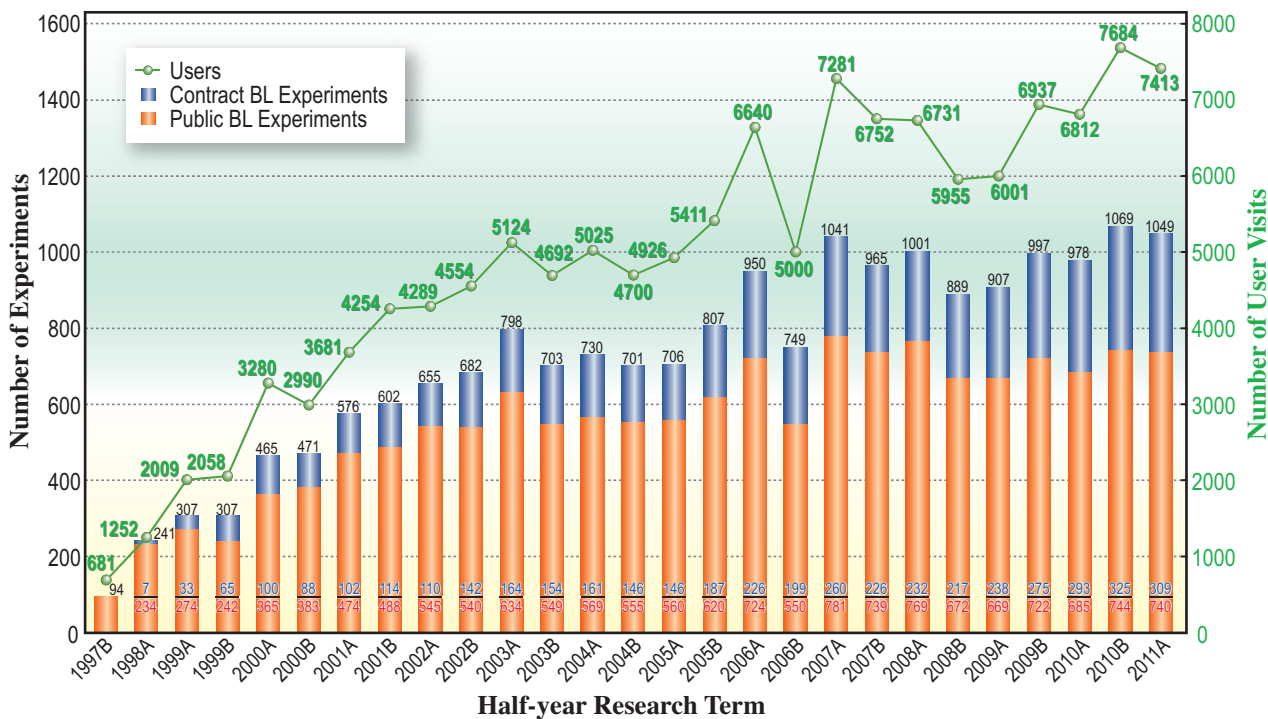


Fig. 3. Numbers of user visits and conducted experiments.

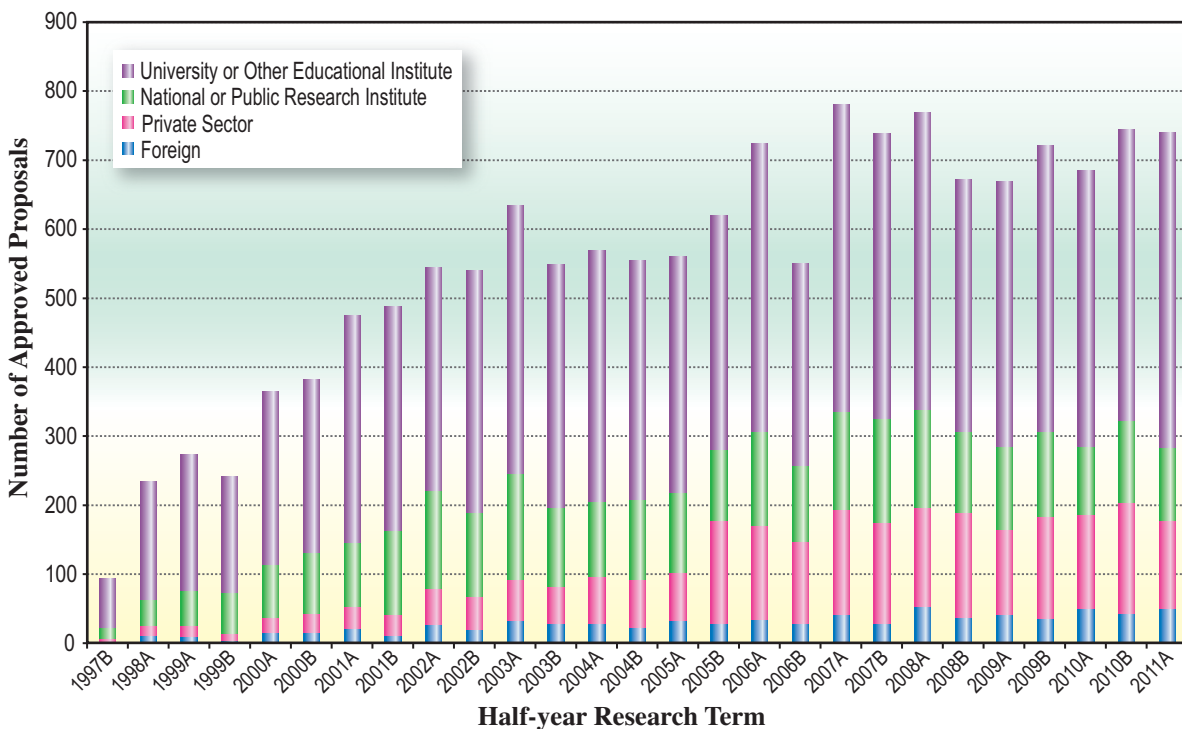


Fig. 4. Number of approved proposals by affiliation of applicants (public beamlines).