

## VII. Research Complex

The facilities of SPring-8, SACLA and NewSUBARU form a center of excellence at the SPring-8 campus, where JASRI, public beamline users, contractors of contract beamlines, RIKEN, and the University of Hyogo work in close cooperation to form a research complex by playing their own roles to deliver high-quality results

in the field of synchrotron radiation science and technology. Figure 8 shows the SPring-8 research complex and the operation and management of each research facility. The organizational charts of RIKEN and JASRI, which form the kernel of this research complex, are shown in Figs. 9 and 10, respectively.

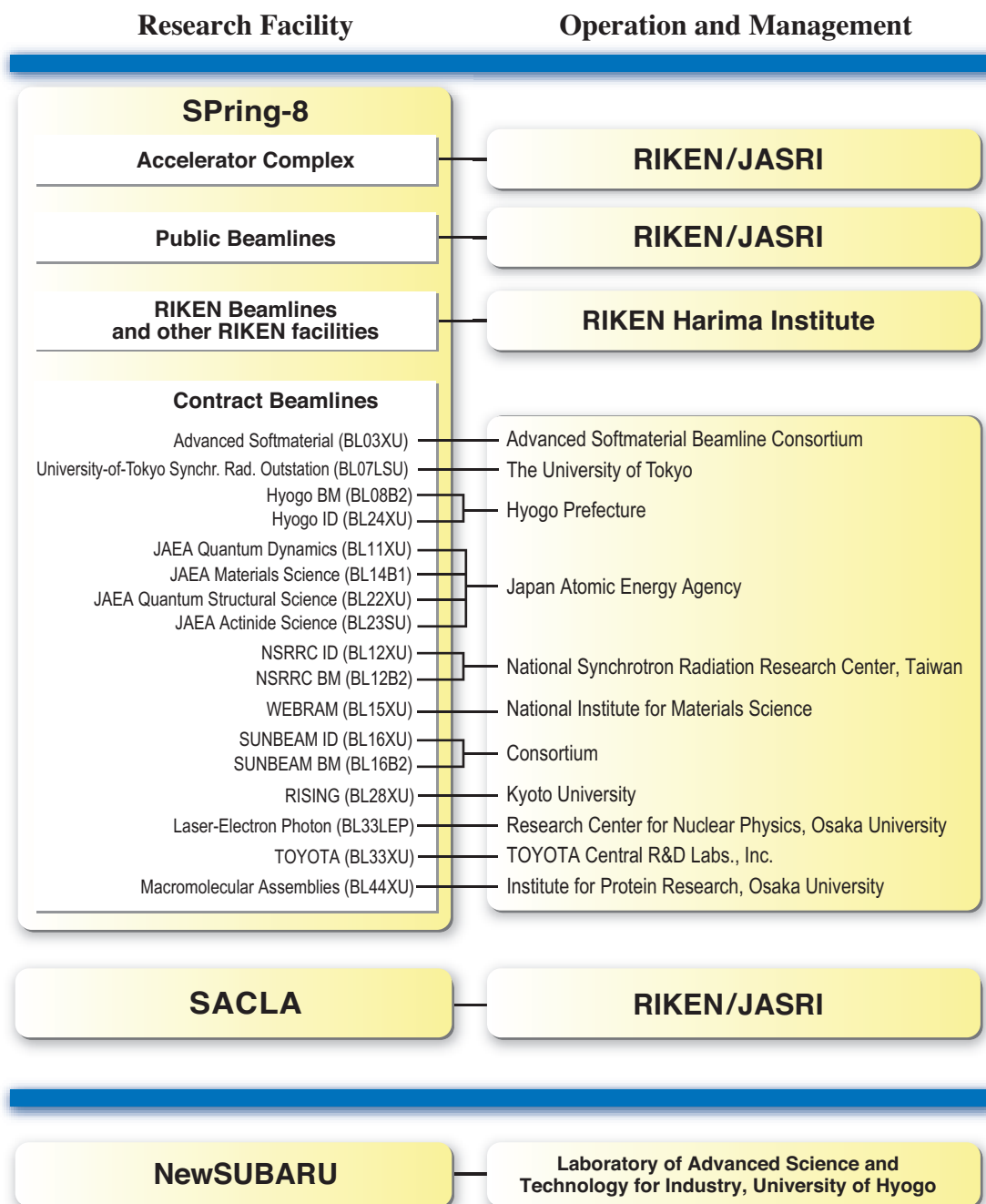


Fig. 8. SPring-8 research complex as of April 2012.

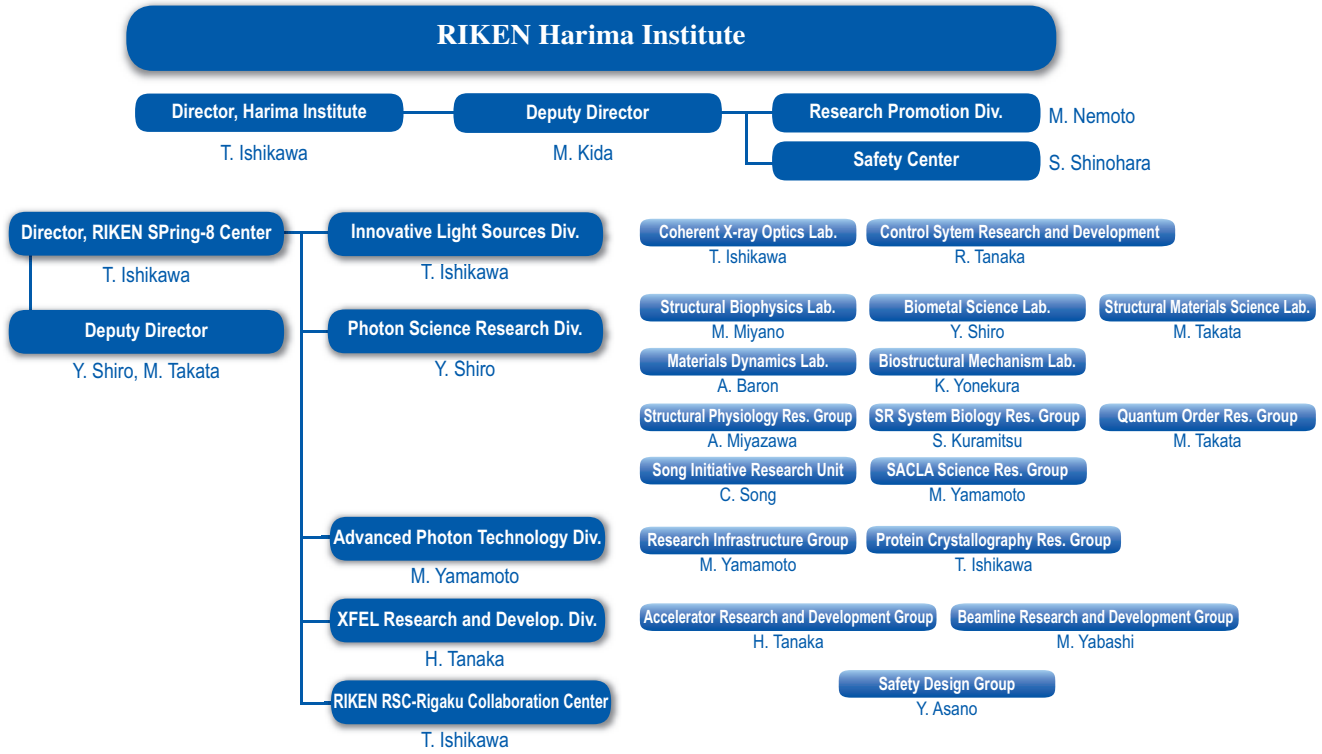


Fig. 9. RIKEN Harima chart as of April 2012.

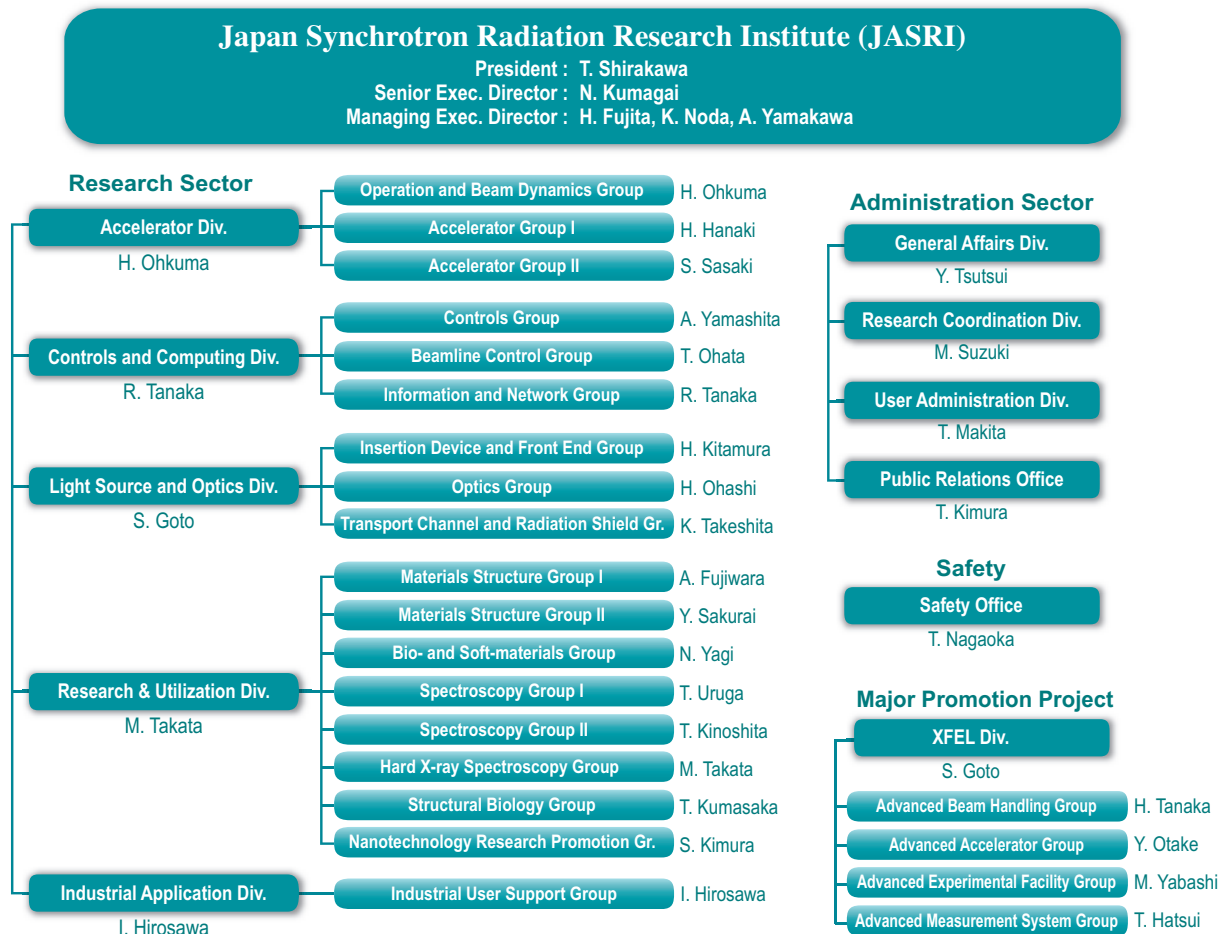


Fig. 10. JASRI chart as of April 2012.