

## VII. Research Complex

The facilities of SPring-8, SACLA, and NewSUBARU form a center of excellence at the SPring-8 campus, where JASRI, public beamline users, contractors of contract beamlines, RIKEN, and the University of Hyogo work in close cooperation to form a research complex by playing their own roles to deliver high-quality

results in the field of synchrotron radiation science and technology. Figure 8 shows the SPring-8 research complex and the operation and management of each research facility. The organizational charts of RIKEN and JASRI, which form the kernel of this research complex, are shown in Fig. 9 and Fig. 10, respectively.

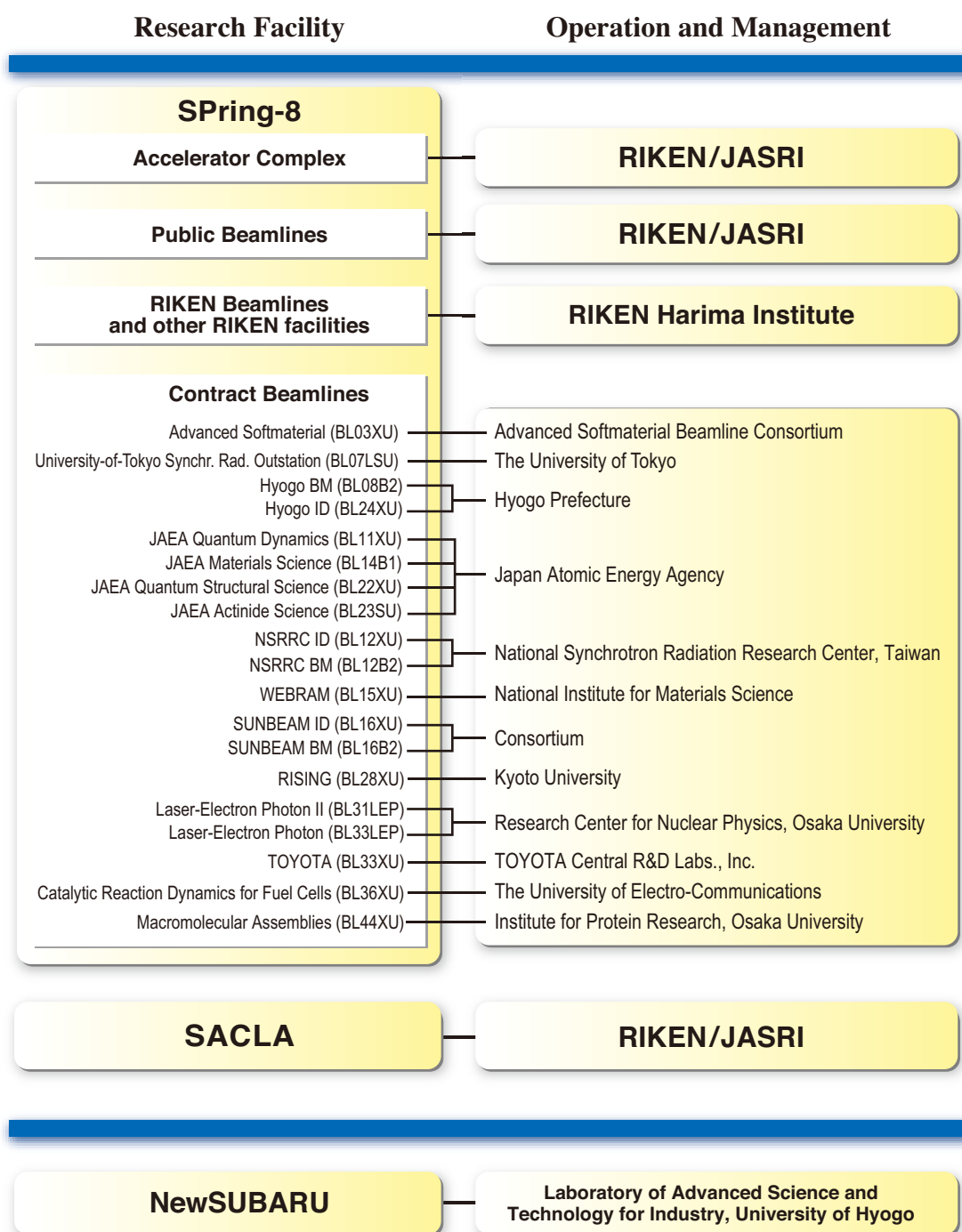


Fig. 8. SPring-8 research complex as of April 2013.

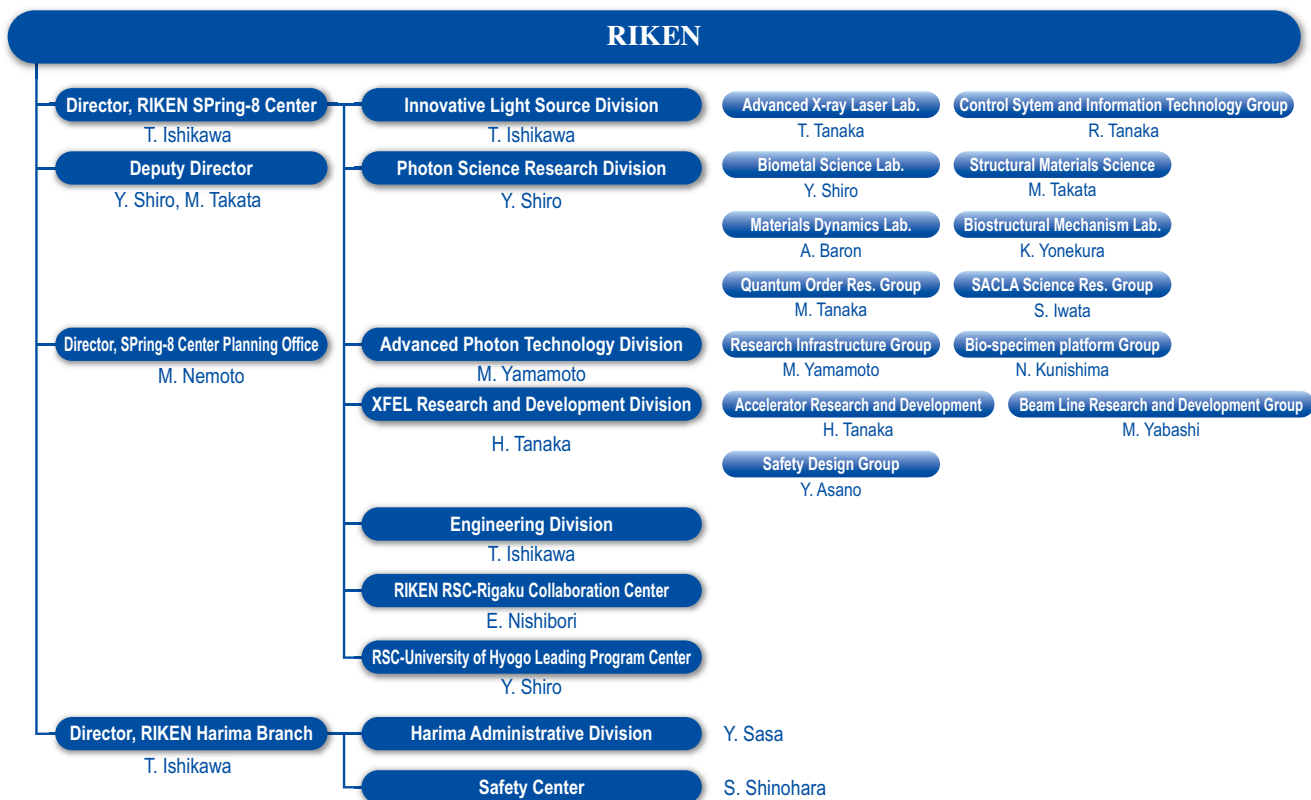


Fig. 9. RIKEN Harima chart as of April 2013.

**Japan Synchrotron Radiation Research Institute (JASRI)**  
 President : Y. Doi  
 Senior Exec. Director : N. Kumagai  
 Managing Exec. Director : H. Fujita, K. Noda, A. Yamakawa

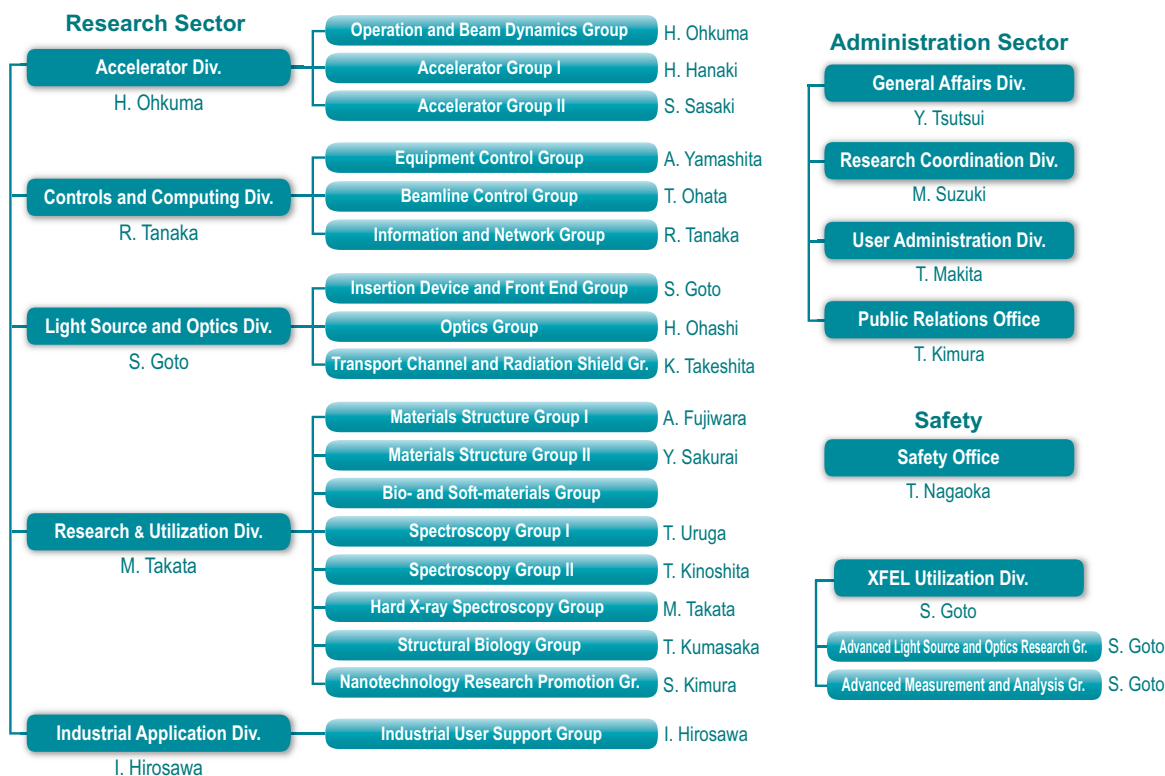


Fig. 10. JASRI chart as of June 2013.