

IV. User Program and Statistics

SPring-8 calls for public use proposals twice a year. The submitted proposals are reviewed by the SPring-8 Proposal Review Committee (SPring-8 PRC). Since 1997, SPring-8 has accepted a variety of proposals. The historical change in the proposal categories is summarized in Fig. 3. For the promotion of Industrial Application at SPring-8, the Industrial Application Division was established in 2005. With consultation support for industrial users given by the division's coordinators, currently, Industrial Application Proposals account for approximately 20% of the total number of proposals conducted at the public beamlines. In addition, the Measurement Service was introduced in 2007B, in which the personnel of the Industrial Application Division carry out XAFS measurements on behalf of users at BL14B2. SPring-8 also launched the Mail-in Protein Crystallography Data Collection Service at BL38B1 and the Powder X-ray Diffraction Measurement Service at BL19B2 in 2009B, and Hard X-ray Photoemission Spectroscopy (HAXPES) Measurement Service, Thin Film Analysis (GIXD/XRR) Measurement Service at BL46XU in 2012B. Proposal statistics from 1997B to 2013B are shown in Table IV.

SPring-8 consistently provides ~4000 hours of user beamtime per year. Since beginning operation in 1997, SPring-8 has provided users with a total beamtime of 62,704 hours. The beamtime available to users, the number of experiments conducted, and the number of user visits at the public and contract beamlines are summarized in Table V and in Fig. 4. Part of the proposals is for proprietary use, in which refereed reports may not be required. Figure 5 shows the number of the proprietary use for each research term. The number is increasing for the public beamlines. Figure 6 shows the number of unique users for each fiscal year; there are approximately 1500 new users annually. The number of submitted and approved proposals by research term, the approved rate, the total shift of the beamtime for the public beamlines are summarized in Fig. 7. The approved rate is about 70% since the inception of SPring-8. The breakdowns of approved proposals sorted by user affiliation at the public and contract beamlines are shown in Fig. 8 and Fig. 9, respectively. The numbers of the approved proposals sorted by research area at the public and contract beamlines are shown in Fig. 10 and Fig. 11, respectively.

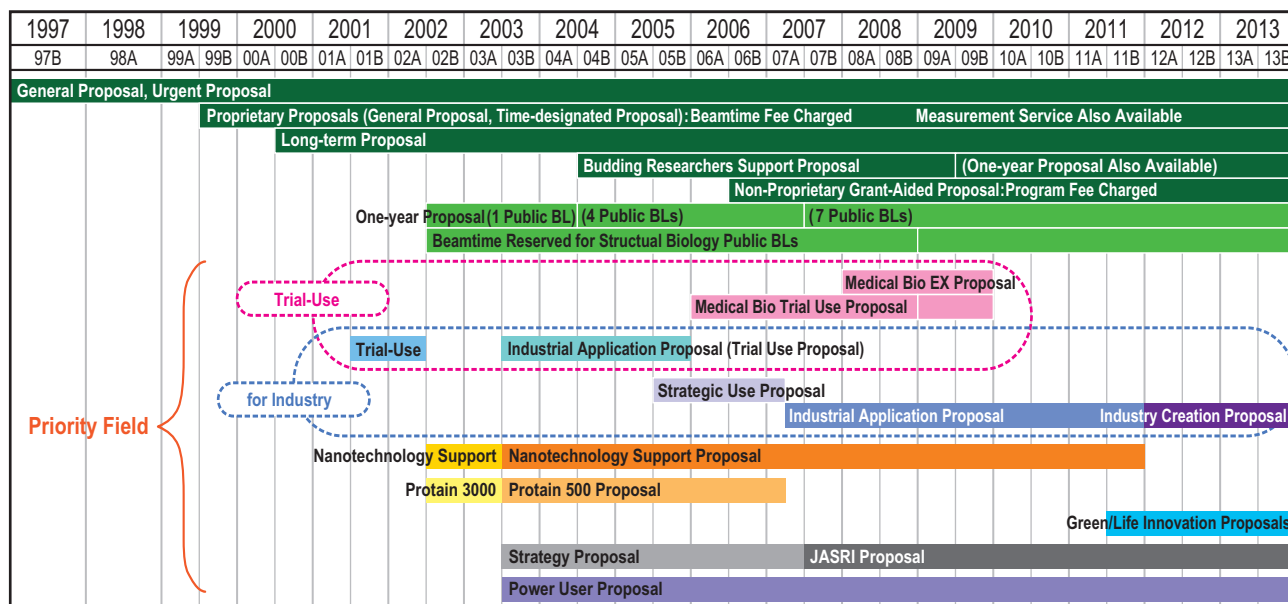


Fig. 3. Categories of proposals for the public beamlines.

Table IV. Numbers of submitted proposals and approved proposals by research term

Research Term	Deadline	Submitted proposals	Approved proposals
1997B: 1997.10 - 1998.03	1997.1.10	198	134
1998A: 1998.04 - 1998.10	1998.1.6	305	229
1999A: 1998.11 - 1999.06	1998.7.12	392	258
1999B: 1999.09 - 1999.12	1999.6.19	431	246
2000A: 2000.02 - 2000.06	1999.10.16	424	326
2000B: 2000.10 - 2001.01	2000.6.17	582	380
2001A: 2001.02 - 2001.06	2000.10.21	502	409
2001B: 2001.09 - 2002.02	2001.5.26	619	457
2002A: 2002.02 - 2002.07	2001.10.27	643	520
2002B: 2002.09 - 2003.02	2002.6.3	751	472
2003A: 2003.02 - 2003.07	2002.10.28	733	563
2003B: 2003.09 - 2004.02	2003.6.16	938	621
2004A: 2004.02 - 2004.07	2003.11.4	772	595
2004B: 2004.09 - 2004.12	2004.6.9	886	562
2005A: 2005.04 - 2005.08	2005.1.5	878	547
2005B: 2005.09 - 2005.12	2005.6.7	973	624
2006A: 2006.03 - 2006.07	2005.11.15	916	699
2006B: 2006.09 - 2006.12	2006.5.25	867	555
2007A: 2007.03 - 2007.07	2006.11.16	1099	761
2007B: 2007.09 - 2008.02	2007.6.7	1007	721
2008A: 2008.04 - 2008.07	2007.12.13	1009	749
2008B: 2008.10 - 2009.03	2008.6.26	1163	659
2009A: 2009.04 - 2009.07	2008.12.11	979	654
2009B: 2009.10 - 2010.02	2009.6.25	1076	709
2010A: 2010.04 - 2010.07	2009.12.17	919	665
2010B: 2010.10 - 2011.02	2010.7.1	1022	728
2011A: 2011.04 - 2011.07	2010.12.9	1024	731
2011B: 2011.10 - 2012.02	2011.6.30	1077	724
2012A: 2012.04 - 2012.07	2011.12.8	816	621
2012B: 2012.10 - 2013.02	2012.6.28	965	757
2013A: 2013.04 - 2012.07	2012.12.13	880	609
2013B: 2013.10 - 2013.12	2013.6.20	905	594

Notes:
1997B-2006B: The number of proposals are indicated as of submission deadline.
After 2007A: The total number of proposals are indicated.
The number of longterm proposals are counted by beamline, that is, if the project leader uses two beamlines, it is counted as two proposals.

Table V. Numbers of experiments and users at public and contract beamlines by research term

Research Term	User time (hours)	Public BL		Contract BL	
		Experiments	Users	Experiments	Users
1997B: 1997.10 - 1998.03	1,286	94	681	–	–
1998A: 1998.04 - 1998.10	1,702	234	1,252	7	–
1999A: 1998.11 - 1999.06	2,585	274	1,542	33	467
1999B: 1999.09 - 1999.12	1,371	242	1,631	65	427
2000A: 2000.02 - 2000.06	2,051	365	2,486	100	794
2000B: 2000.10 - 2001.01	1,522	383	2,370	88	620
2001A: 2001.02 - 2001.06	2,313	474	2,915	102	766
2001B: 2001.09 - 2002.02	1,867	488	3,277	114	977
2002A: 2002.02 - 2002.07	2,093	545	3,246	110	1,043
2002B: 2002.09 - 2003.02	1,867	540	3,508	142	1,046
2003A: 2003.02 - 2003.07	2,246	634	3,777	164	1,347
2003B: 2003.09 - 2004.02	1,844	549	3,428	154	1,264
2004A: 2004.02 - 2004.07	2,095	569	3,756	161	1,269
2004B: 2004.09 - 2004.12	1,971	555	3,546	146	1,154
2005A: 2005.04 - 2005.08	1,880	560	3,741	146	1,185
2005B: 2005.09 - 2005.12	1,818	620	4,032	187	1,379
2006A: 2006.03 - 2006.07	2,202	724	4,809	226	1,831
2006B: 2006.09 - 2006.12	1,587	550	3,513	199	1,487
2007A: 2007.03 - 2007.07	2,448	781	4,999	260	2,282
2007B: 2007.09 - 2008.02	2,140	739	4,814	226	1,938
2008A: 2008.04 - 2008.07	2,231	769	4,840	232	1,891
2008B: 2008.10 - 2009.03	1,879	672	4,325	217	1,630
2009A: 2009.04 - 2009.07	1,927	669	4,240	238	1,761
2009B: 2009.10 - 2010.02	2,087	722	4,793	275	2,144
2010A: 2010.04 - 2010.07	1,977	685	4,329	293	2,483
2010B: 2010.10 - 2011.02	2,094	744	4,872	325	2,812
2011A: 2011.04 - 2011.07	2,131	740	4,640	309	2,773
2011B: 2011.10 - 2012.02	1,927	730	4,576	319	2,769
2012A: 2012.04 - 2012.07	1,972	637	4,304	285	2,692
2012B: 2012.10 - 2013.02	2,184	771	5,072	314	3,181
2013A: 2013.04 - 2013.07	1,837	633	4,053	275	2,835
2013B: 2013.10 - 2013.12	1,570	610	3,770	286	2,723
	62,704	18,302	117,137	5,997	50,970

Note:
The number of longterm proposals are counted by beamline, that is, if two beamlines were used for one experiment, those are counted as two experiments.

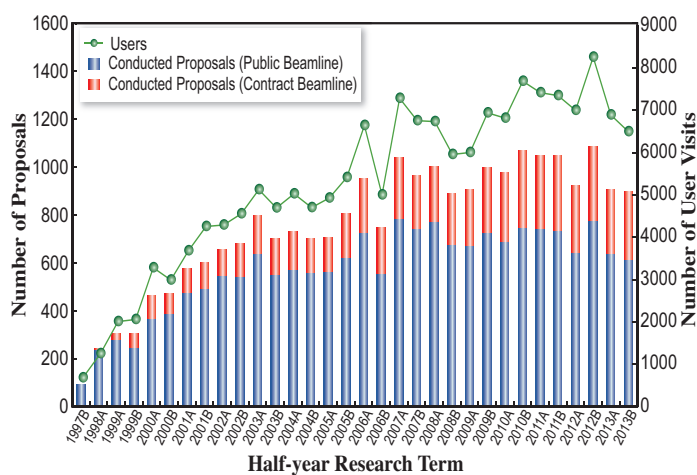


Fig. 4. Numbers of user visits and conducted experiments.

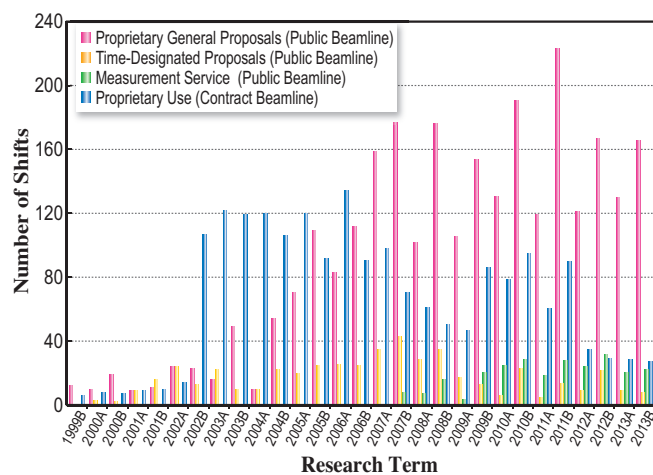


Fig. 5. Number of shifts for proprietary proposals.
One shift is 8 hours at SPRING-8 beamlines.

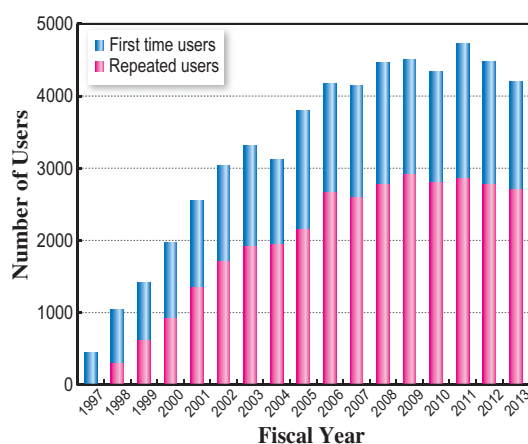


Fig. 6. Numbers of user visits and conducted experiments.

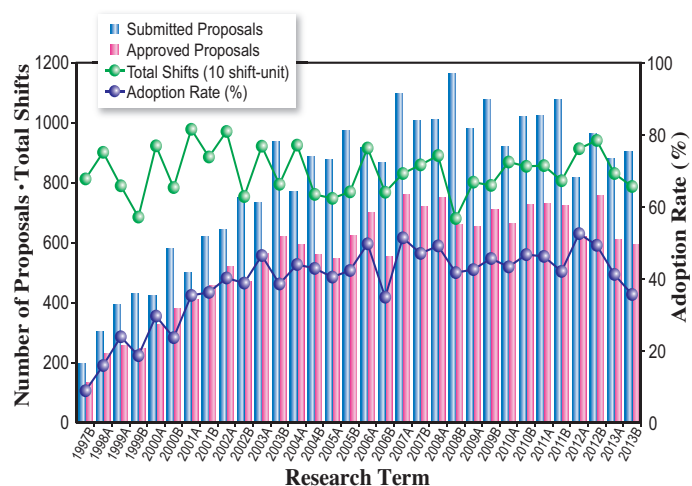


Fig. 7. Numbers of submitted proposals and approved proposals by research term (public beamlines).

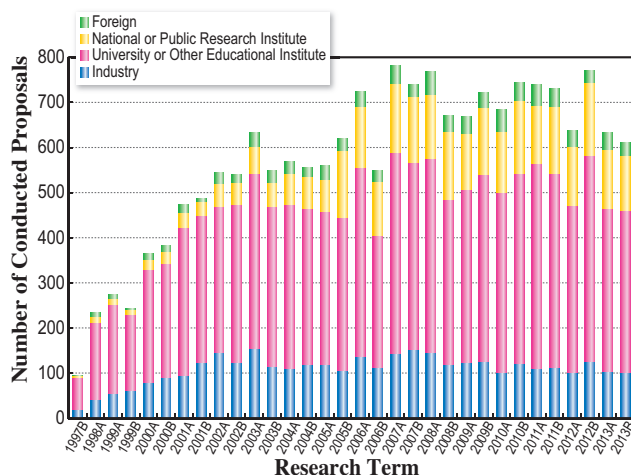


Fig. 8. Number of conducted proposals by project leaders (public beamlines).

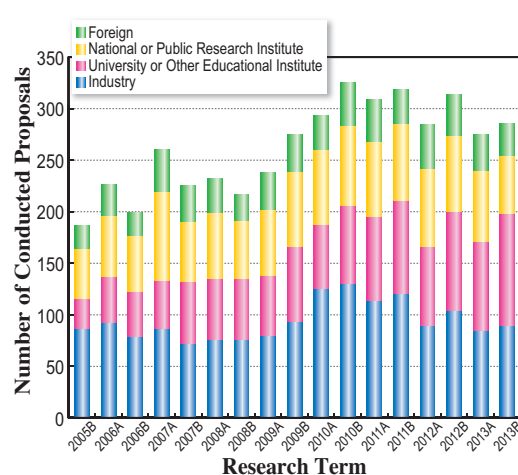


Fig. 9. Number of conducted proposals by affiliation categories (contract beamlines).

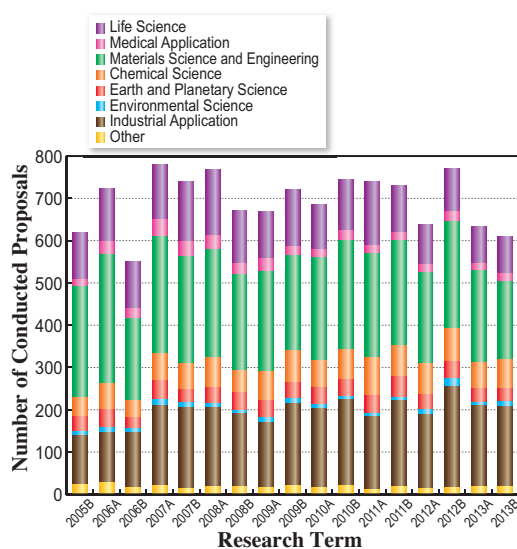


Fig. 10. Number of conducted proposals by research area (public beamlines).

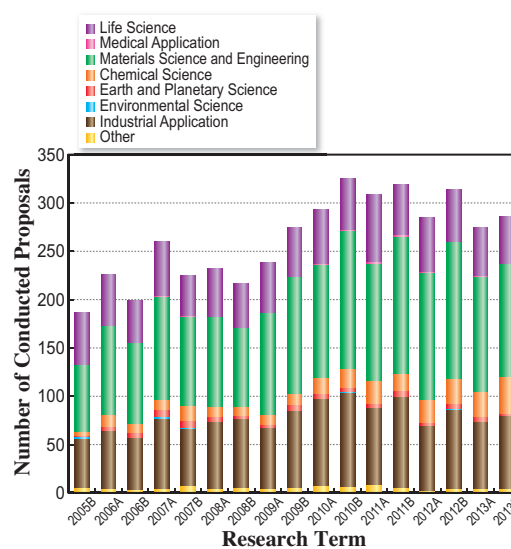


Fig. 11. Number of conducted proposals by research area (contract beamlines).