

## V. Research Outcome

As of March 2014, the number of registered refereed papers is 9,163, of which 7,503 papers resulted from the use of public beamlines, 1,752 from that of contract beamlines, 1,057 from RIKEN beamlines, and 479 papers from hardware/software R&D. Note that papers that used two or more beamlines are counted separated for each beamline. Figure 12 shows the annual statistics of refereed papers.

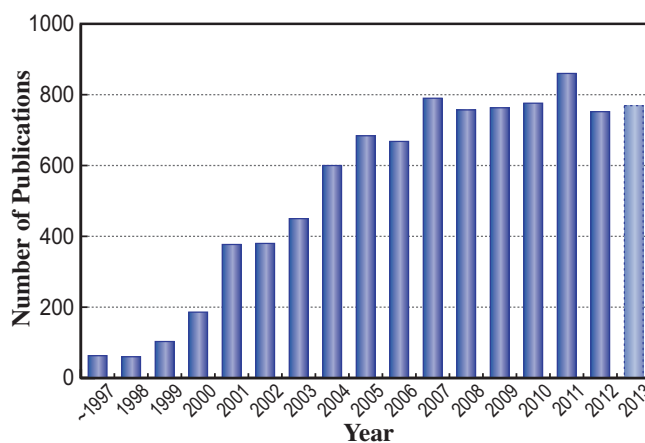


Fig. 12. Number of refereed publications as of March 2014.

## VI. Budget and Personnel

When SPring-8 started operation in 1997, it was jointly managed by RIKEN, JAERI (JAEA, as it is known today), and JASRI. However, JAERI withdrew from management of SPring-8 on September 30, 2005. Today SPring-8 is administered by RIKEN and JASRI in a collaborative manner.

Figure 13 shows the annual budget allocated to

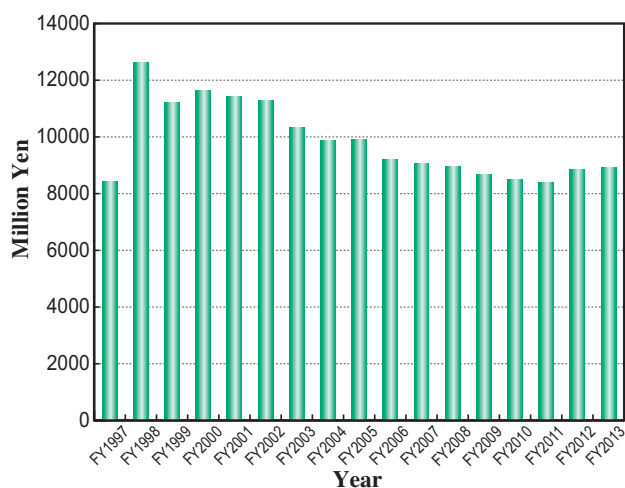
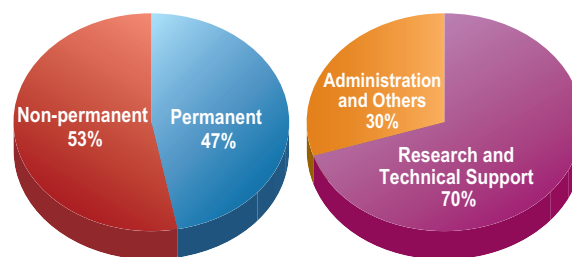


Fig. 13. SPring-8 budget.

operations, maintenance, and promotion of SPring-8 from FY1997 to date. The budget for FY2013 was 8.918 billion yen.

As of October 2013, RIKEN and JASRI have a total of 511 staff members (Fig. 14).



	by Type		by Field		Others Visiting Scientists and Students
	Permanent	Non-permanent	Research and Technical Support	Administration and Others	
<b>RIKEN</b>	48	142	150	40	534
<b>JASRI</b>	191	130	207	114	121

Including double counts.

Fig. 14. Personnel at SPring-8: JASRI and RIKEN.