

VII. Research Complex

The facilities of SPring-8, SACLA, and NewSUBARU form a Center of Excellence (COE) at the SPring-8 campus, where JASRI, public beamline users, contractors of contract beamlines, RIKEN, and the University of Hyogo work in close cooperation, forming a research complex where each member plays its own role to deliver high-

quality results in the field of synchrotron radiation science and technology. Figure 15 shows the SPring-8 research complex, and the operation and management of each research facility. The organizational charts of RIKEN and JASRI, which are at the center of this research complex, are shown in Fig. 16 and Fig. 17, respectively.

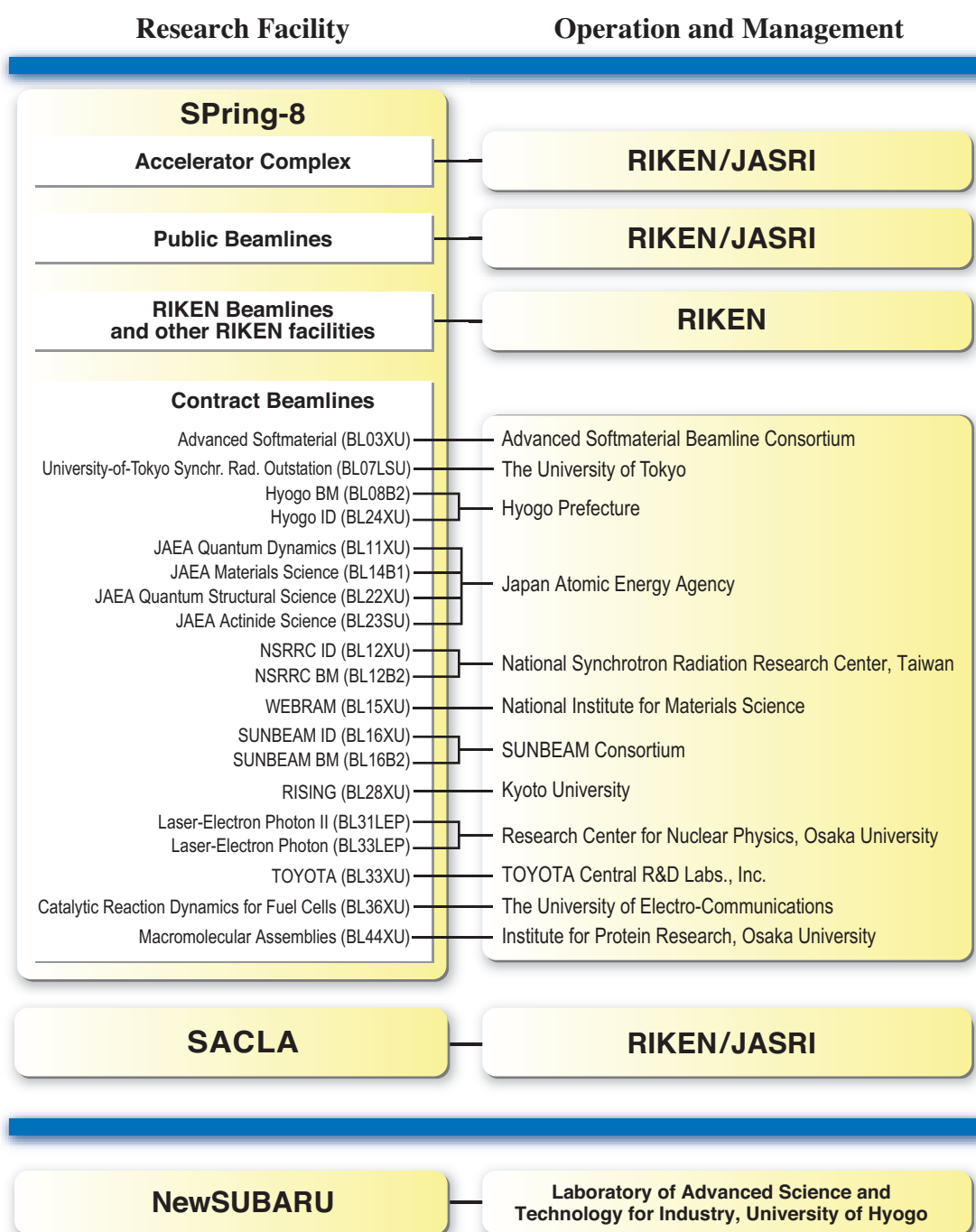


Fig. 15. SPring-8 research complex as of April 2014.

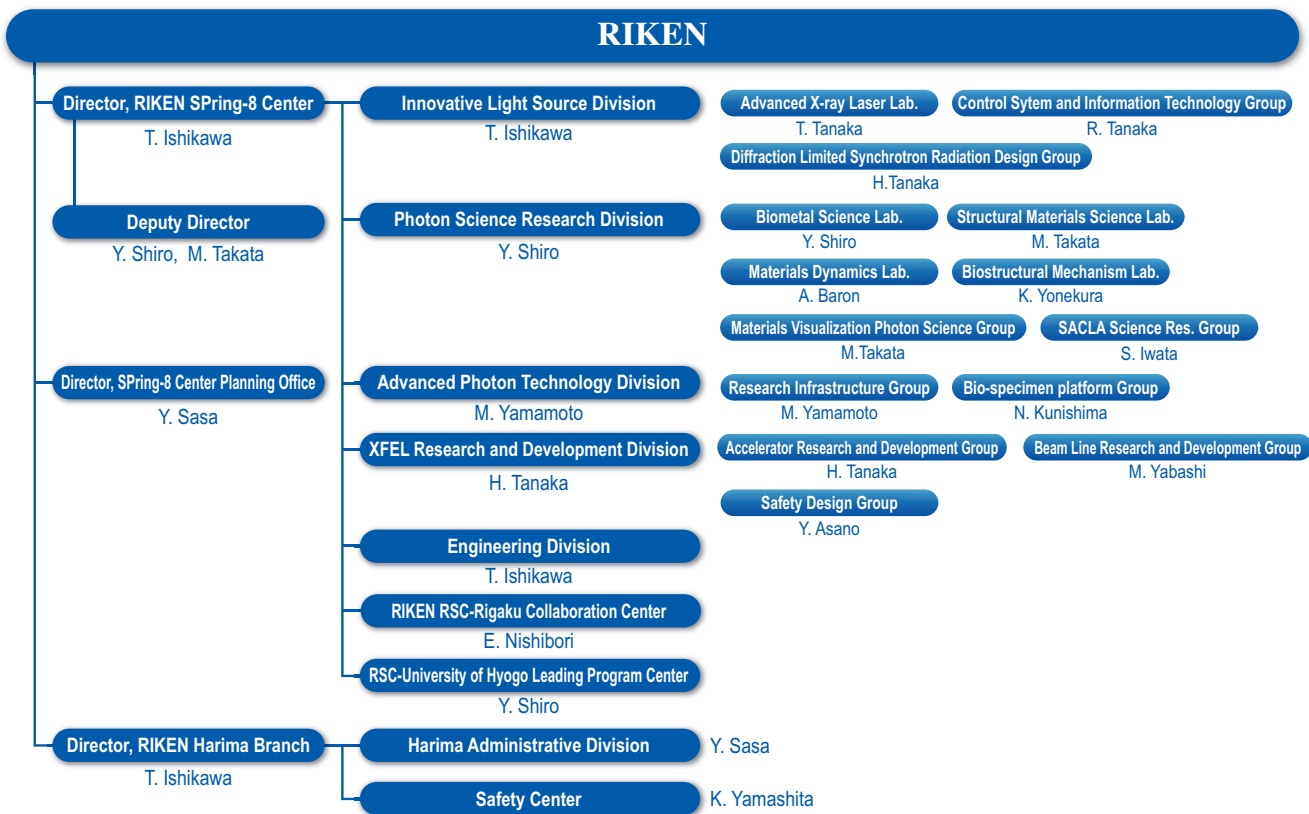


Fig. 16. RIKEN Harima Branch chart as of April 2014.

Japan Synchrotron Radiation Research Institute (JASRI)
 President : Y. Doi
 Senior Exec. Director : N. Kumagai
 Managing Exec. Director : H. Fujita, K. Noda, A. Yamakawa

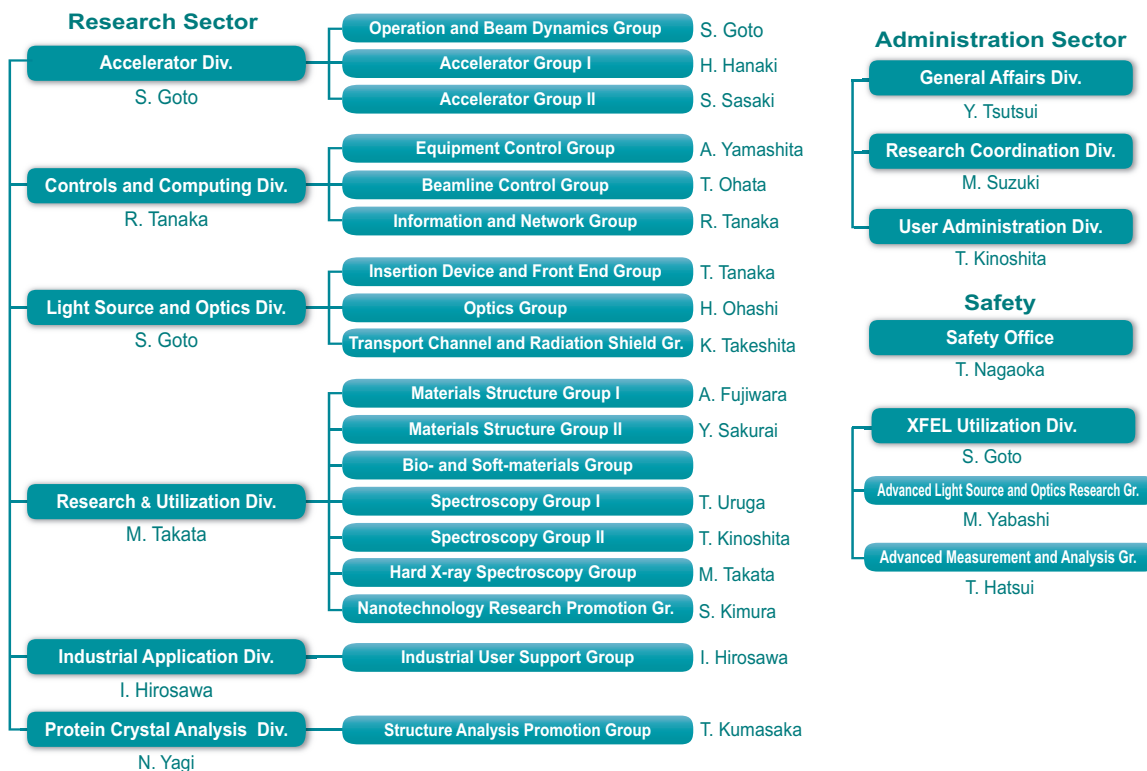


Fig. 17. JASRI chart as of April 2014.