

VII. Research Complex

The facilities of SPring-8, SACLA, and NewsUBARU form a Center of Excellence (COE) at the SPring-8 campus, where JASRI, public beamline users, the contractors of contract beamlines, RIKEN, and the University of Hyogo work in close cooperation, forming a research complex

where each member has their own role in delivering high-quality results in the field of synchrotron radiation science and technology. The organizational charts of RIKEN and JASRI, which are at the center of this research complex, are shown in Fig. 4 and Fig. 5, respectively.

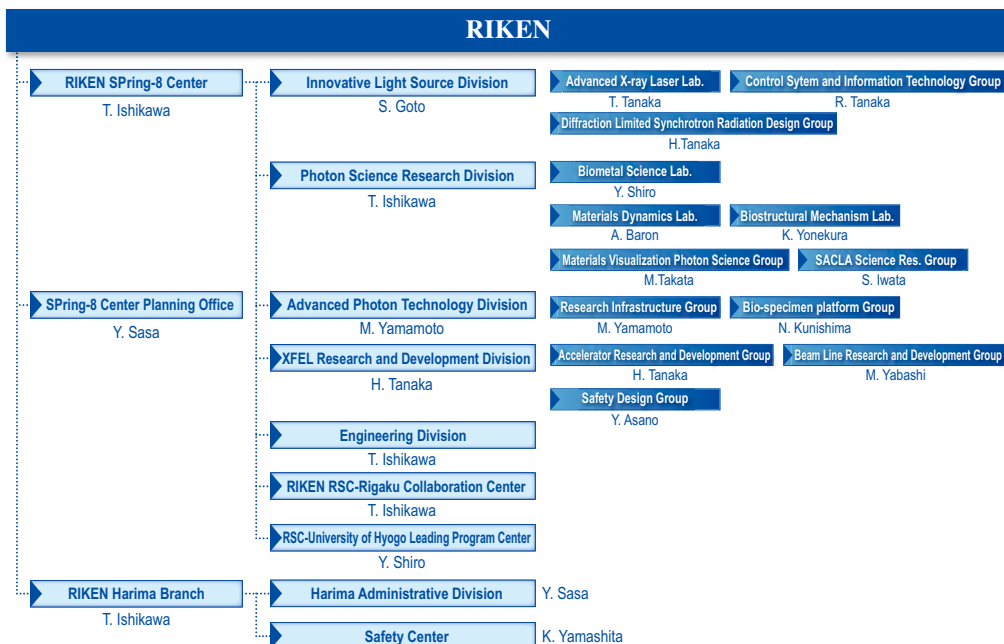


Fig. 4. RIKEN Harima Branch chart as of April 2015.

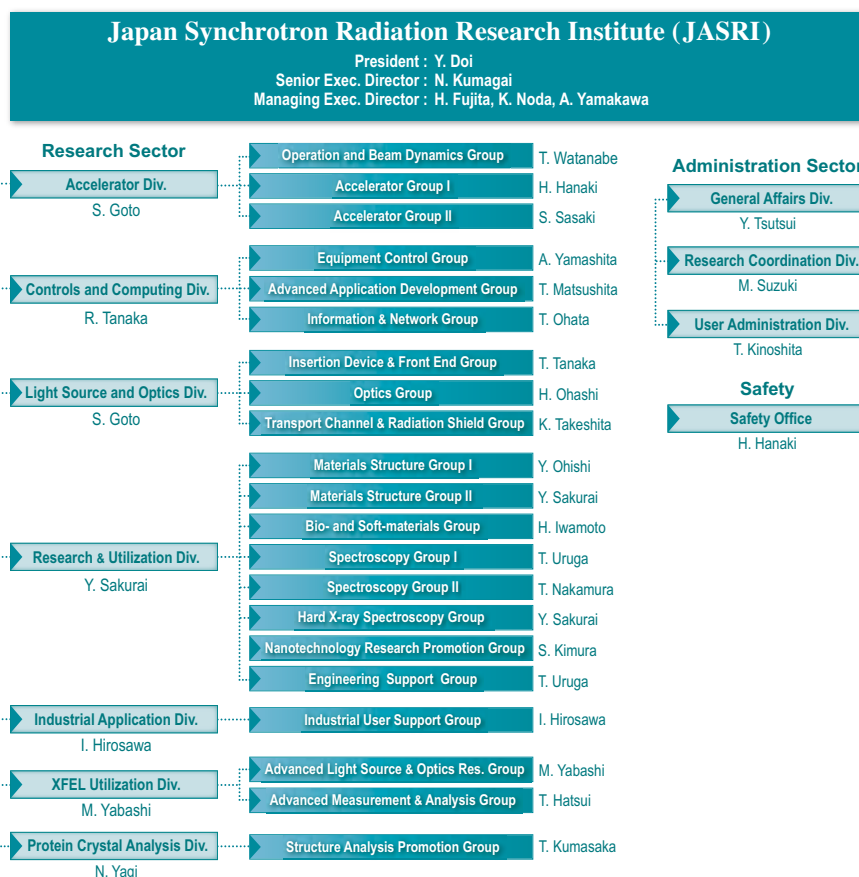


Fig. 5. JASRI chart as of April 2015.