

## IV. User Program and Statistics

SPring-8 calls for public use proposals twice a year, in principle. The submitted proposals are reviewed by the SPring-8 Proposal Review Committee (SPring-8 PRC). Since 1997, SPring-8 has accepted a variety of proposals. For the promotion of research on industrial applications at SPring-8, the Industrial Application Division was established in 2005. With consultation support for industrial users provided by the division's coordinators, Industrial Application Proposals currently account for approximately 16%-20% of the total number of proposals conducted at the public beamlines. In addition, the Measurement Services were introduced in 2007B, wherein personnel of the Industrial Application Division carry out XAFS measurements on behalf of users at BL14B2. SPring-8 also launched a Protein Crystallography Data Collection Service at BL38B1 and a Powder X-ray Diffraction Measurement Service at BL19B2 in 2009B, a Hard X-ray Photoemission

Spectroscopy (HAXPES) Measurement Service and a Thin Film Analysis (GIXD/XRR) Measurement Service at BL46XU in 2012B, and a Small Angle Scattering (SAXS) Measurement Service at BL19B2 in 2014B.

In FY2018, JASRI started to call for Cross-SR Facility Use Proposals for Industrial Application. These are intended to produce outstanding results through the research results from other domestic synchrotron radiation facilities.

SPring-8 has consistently provided ~4,500 h of user beamtime per year. Since the start of its operation in 1997, SPring-8 has succeeded in providing users with a total beamtime of 83,961 h. The beamtime available to users, the number of experiments conducted, and the number of user visits at the public and contract beamlines are summarized in Fig. 3. Some of the proposals are for proprietary use, for which refereed reports are not required. Figures 4 to 13 show the information on user programs.

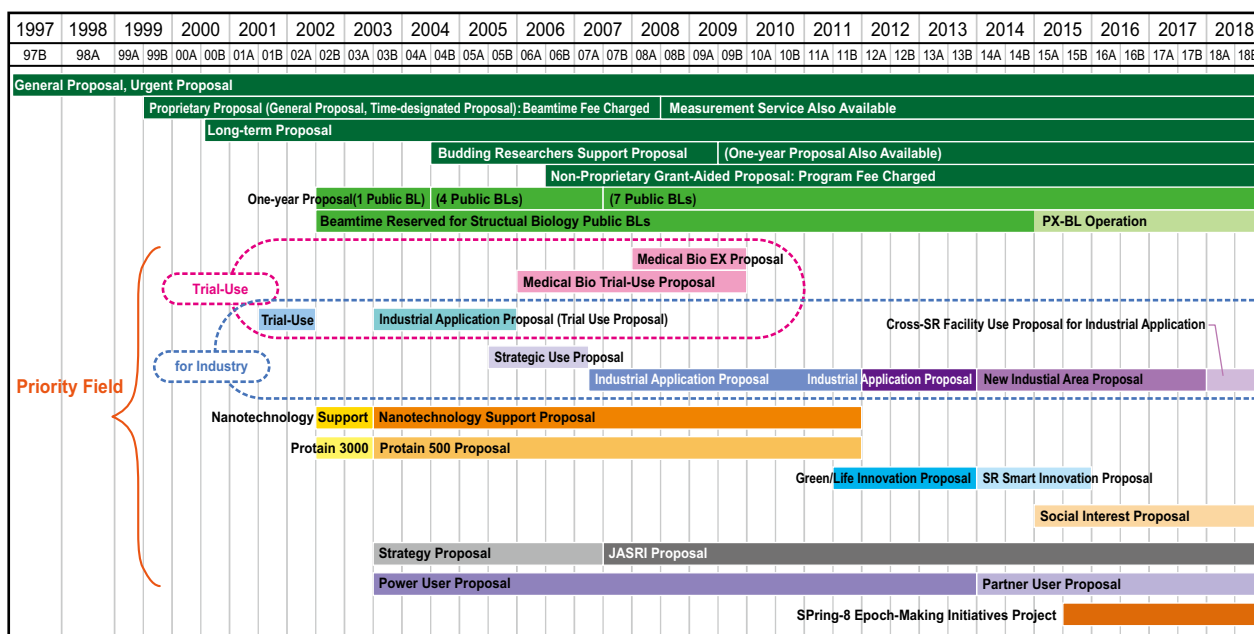


Fig. 3. Categories of proposals for the public beamlines.

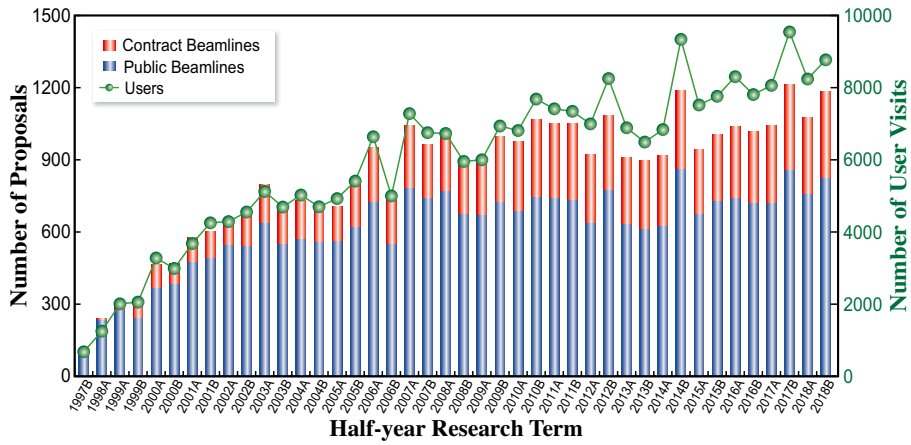


Fig. 4. Numbers of conducted experiments.

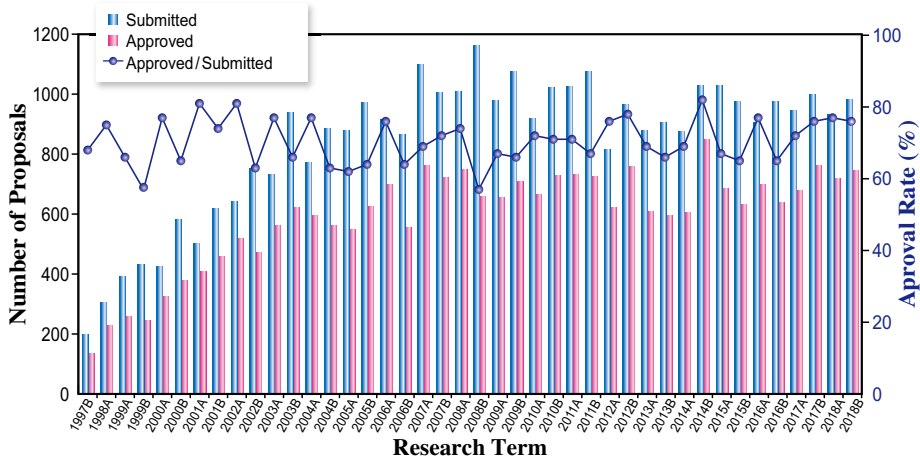


Fig. 5. Numbers of submitted proposals and approved proposals by research term (public beamlines).

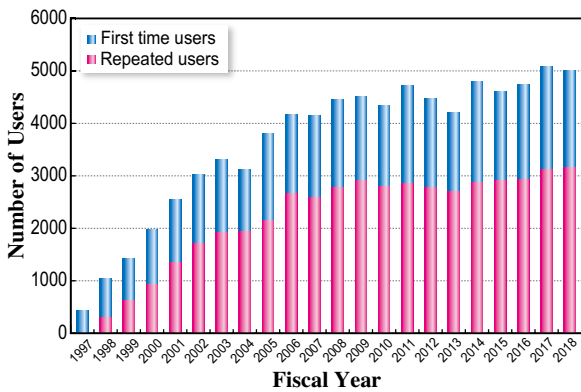


Fig. 6. Numbers of users by fiscal year.

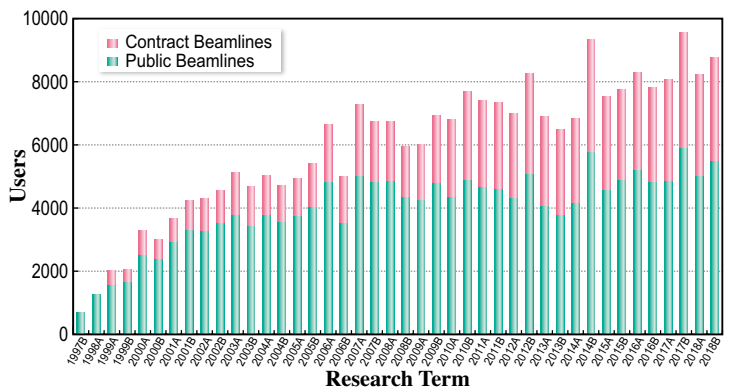


Fig. 7. Numbers of users visits by research term.

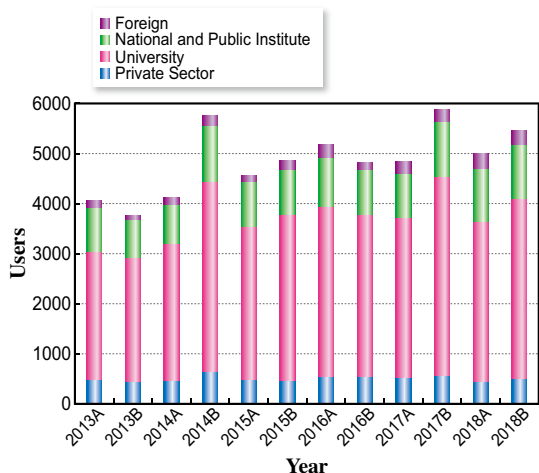


Fig. 8. Numbers of users by affiliation categories (public beamlines).

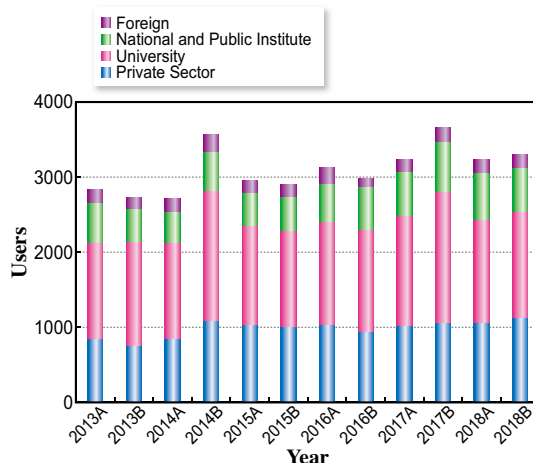


Fig. 9. Numbers of users by affiliation categories (contract beamlines).

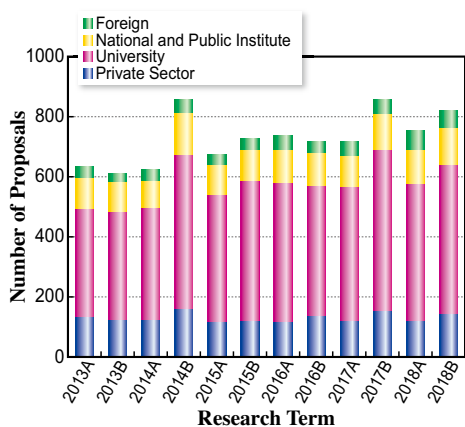


Fig. 10. Numbers of conducted proposals by affiliation (public beamlines).

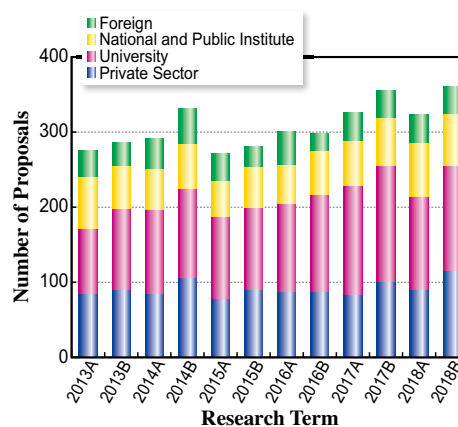


Fig. 11. Numbers of conducted proposals by affiliation categories (contract beamlines).

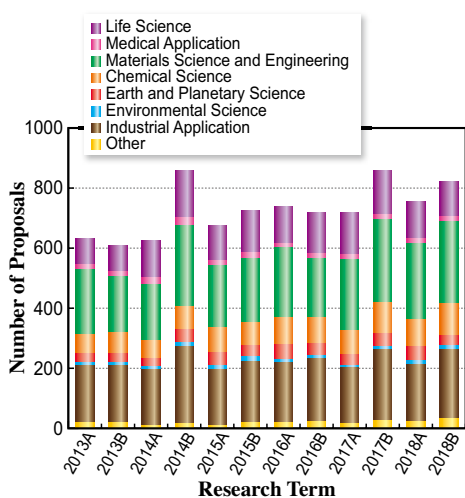


Fig. 12. Numbers of conducted proposals by research area (public beamlines).

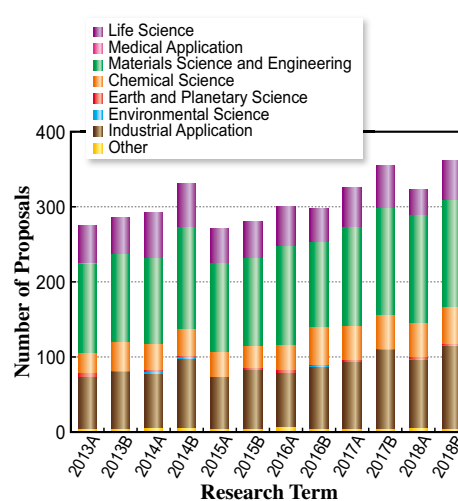


Fig. 13. Numbers of conducted proposals by research area (contract beamlines).