

V. Research Outcome

As of March 2020, the total number of registered refereed papers that involved the use of SPring-8 was 16,500. Figure 14 shows the annual statistics of refereed papers.

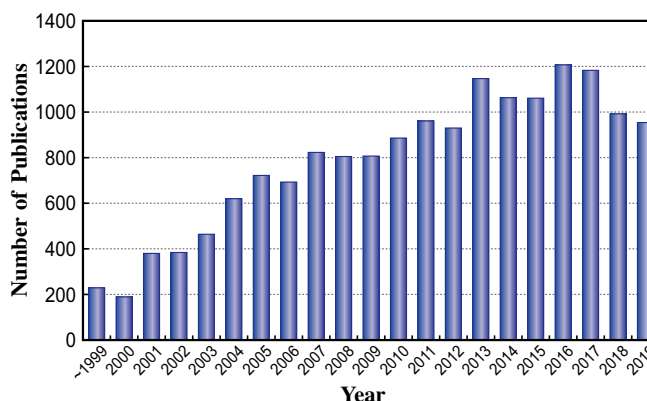


Fig. 14. Number of refereed publications.

VI. Budget and Personnel

The total budget for the operation of SPring-8 in FY2019 was about 9.3 billion yen. As of October 2019, RIKEN and JASRI have a total of 440 staff members.

Figure 15 shows the annual budget allocated to operations, maintenance, and promotion of SPring-8. Figure 16 shows the number of staff at of RIKEN and JASRI.

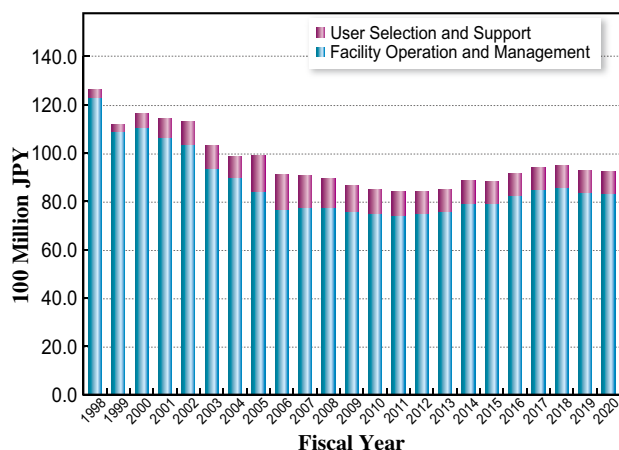


Fig. 15. SPring-8 budget.

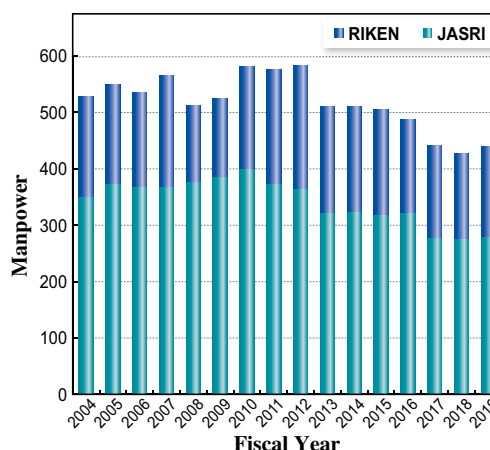


Fig. 16. Personnel at SPring-8: JASRI and RIKEN.

VII. Research Complex

The facilities of SPring-8, SACLA, and NewSUBARU form the Center of Excellence (COE) at the SPring-8 campus where JASRI, public beamline users, the contractors of contract beamlines, RIKEN, and the University of Hyogo work in close cooperation, forming a research complex where

each member has its own role in delivering high-quality results to the field of synchrotron radiation science and technology. The organizational charts of RIKEN and JASRI, which are at the center of this research complex, are shown in Fig. 17 and Fig. 18, respectively.

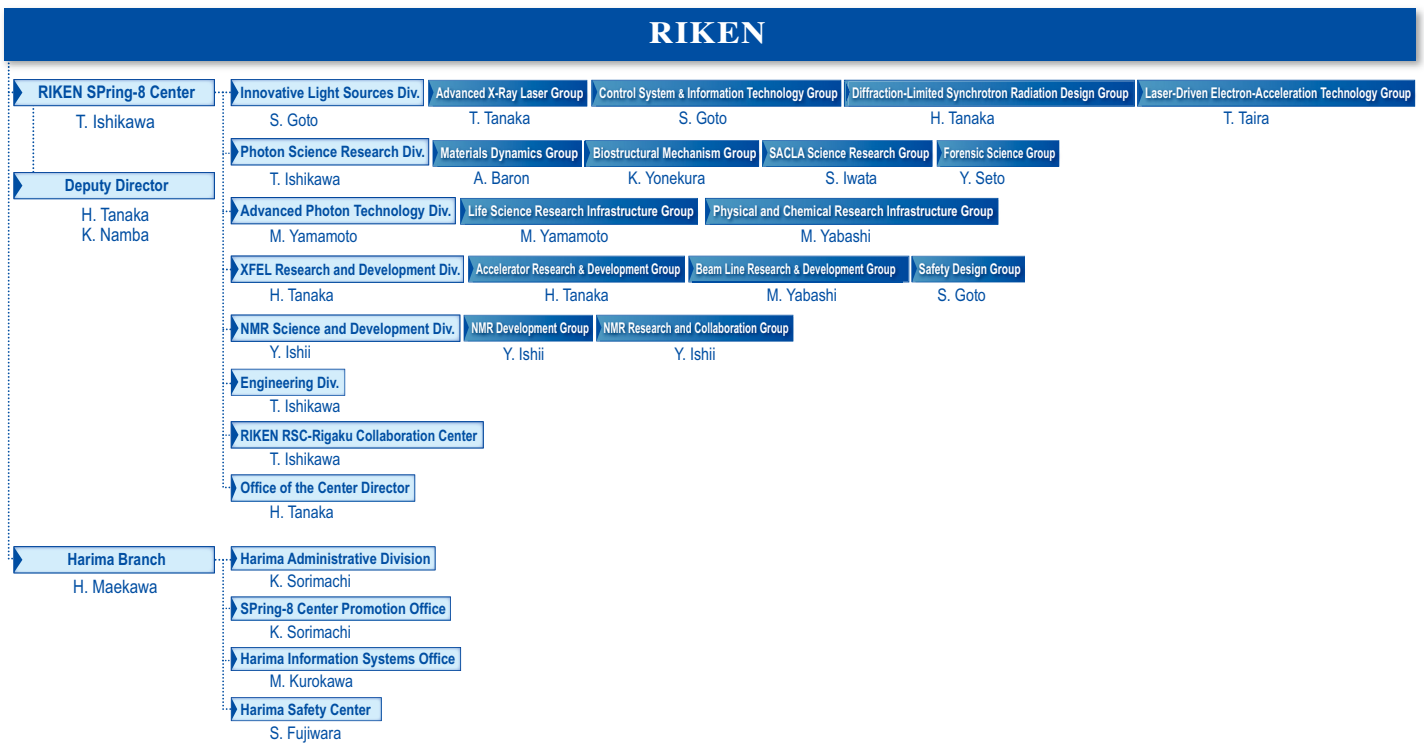


Fig. 17. RIKEN Harima Branch chart as of April 2020.

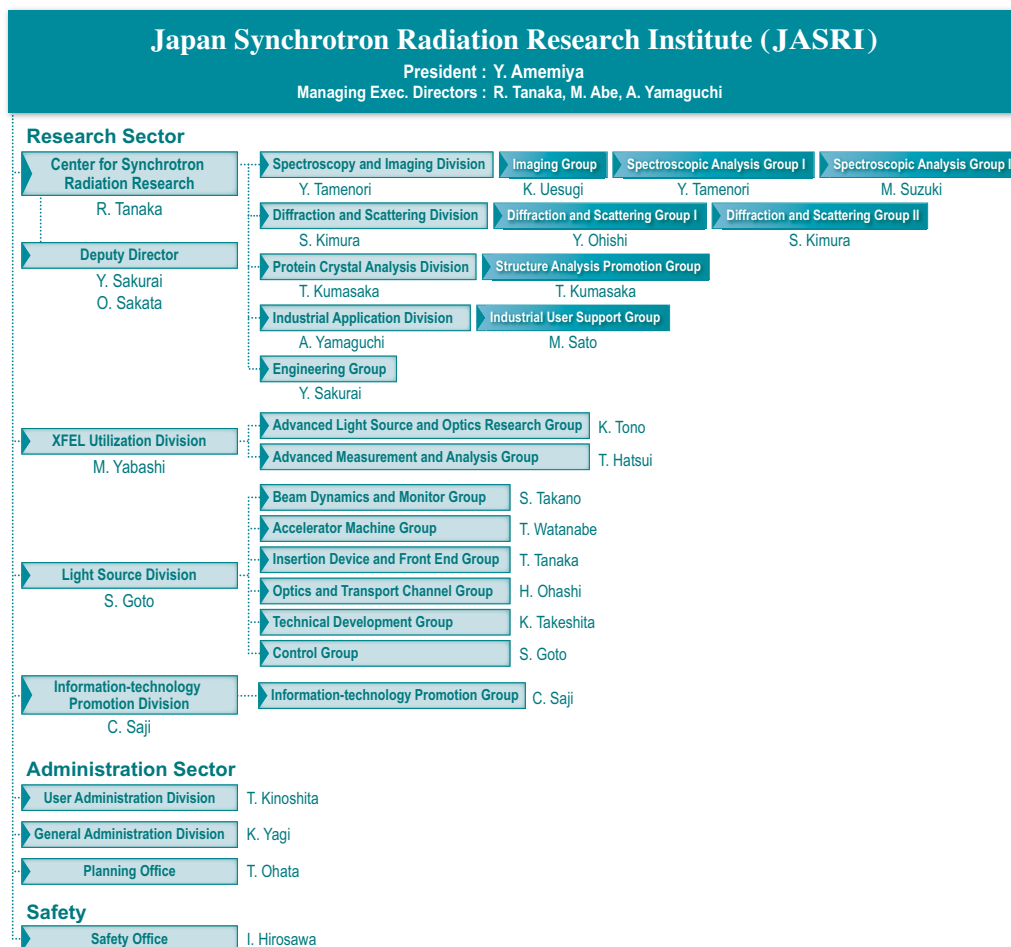


Fig. 18. JASRI chart as of April 2020.