

V. Research Outcome

As of March 2022, the total number of registered refereed papers from SPring-8 was 19,735. Figure 14 shows the annual statistics of refereed papers.

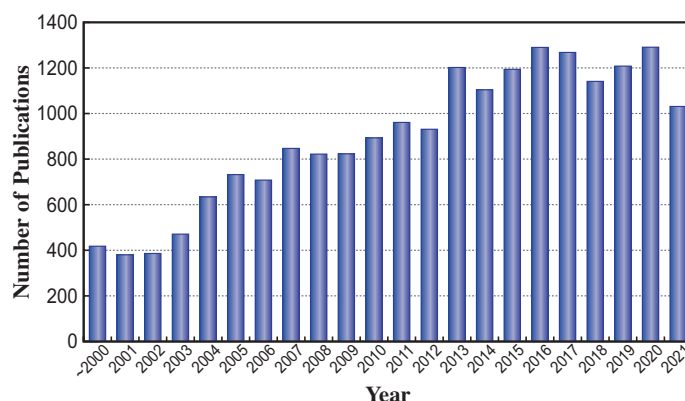


Fig. 14. Number of refereed publications.

VI. Budget and Personnel

When SPring-8 started operation in 1997, it was jointly managed by RIKEN, JAERI (now JAEA), and JASRI. However, JAERI withdrew from the management of SPring-8 on September 30, 2005. SPring-8 is currently administered by RIKEN and JASRI collaboratively.

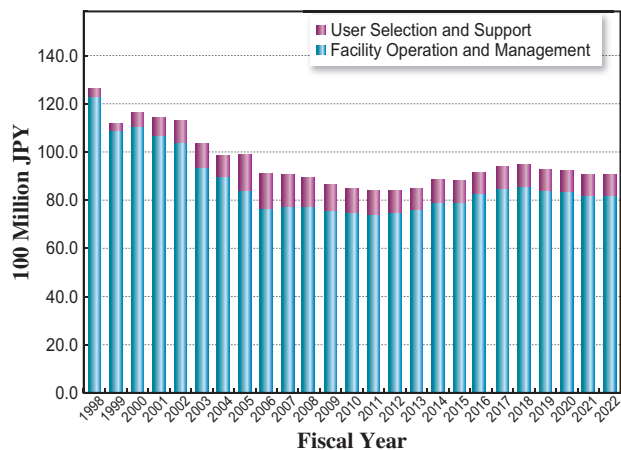


Fig. 15. SPring-8 budget.

The total budget for the operation of SPring-8 in FY2021 was about 9.1 billion yen. As of October 2021, RIKEN and JASRI have a total of 462 staff members. Figure 15 shows the annual budget allocated to operations, maintenance, and promotion of SPring-8. Figure 16 shows the manpower at RIKEN and JASRI.

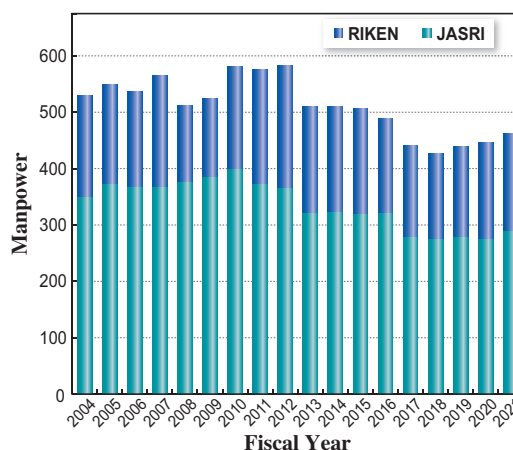


Fig. 16. Personnel at SPring-8: JASRI and RIKEN.

VII. Research Complex

The facilities of SPring-8, SACLA, and NewSUBARU form the Center of Excellence (COE) at the SPring-8 campus where JASRI, public beamline users, the contractors of contract beamlines, RIKEN, and University of Hyogo work in close cooperation, forming a research complex

where all members play their own role in delivering high-quality results to the field of synchrotron radiation science and technology. The organizational charts of RIKEN and JASRI, which are at the center of this research complex, are shown in Figs. 17 and 18, respectively.

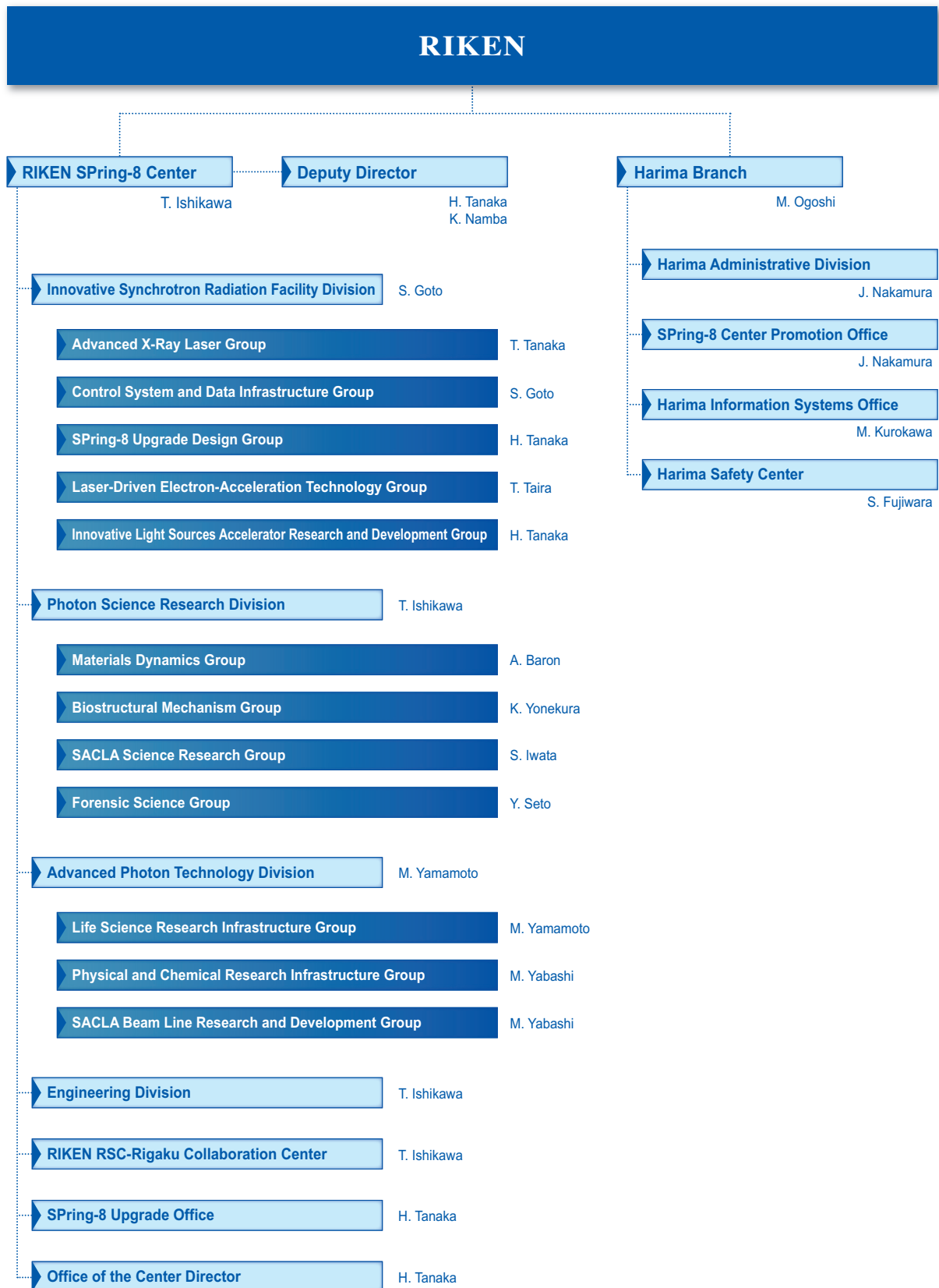


Fig. 17. RIKEN Harima Campus chart as of April 2022.

Japan Synchrotron Radiation Research Institute (JASRI)

President : Y. Amemiya
Executive Managing Director : R. Tanaka, M. Abe, A. Yamaguchi

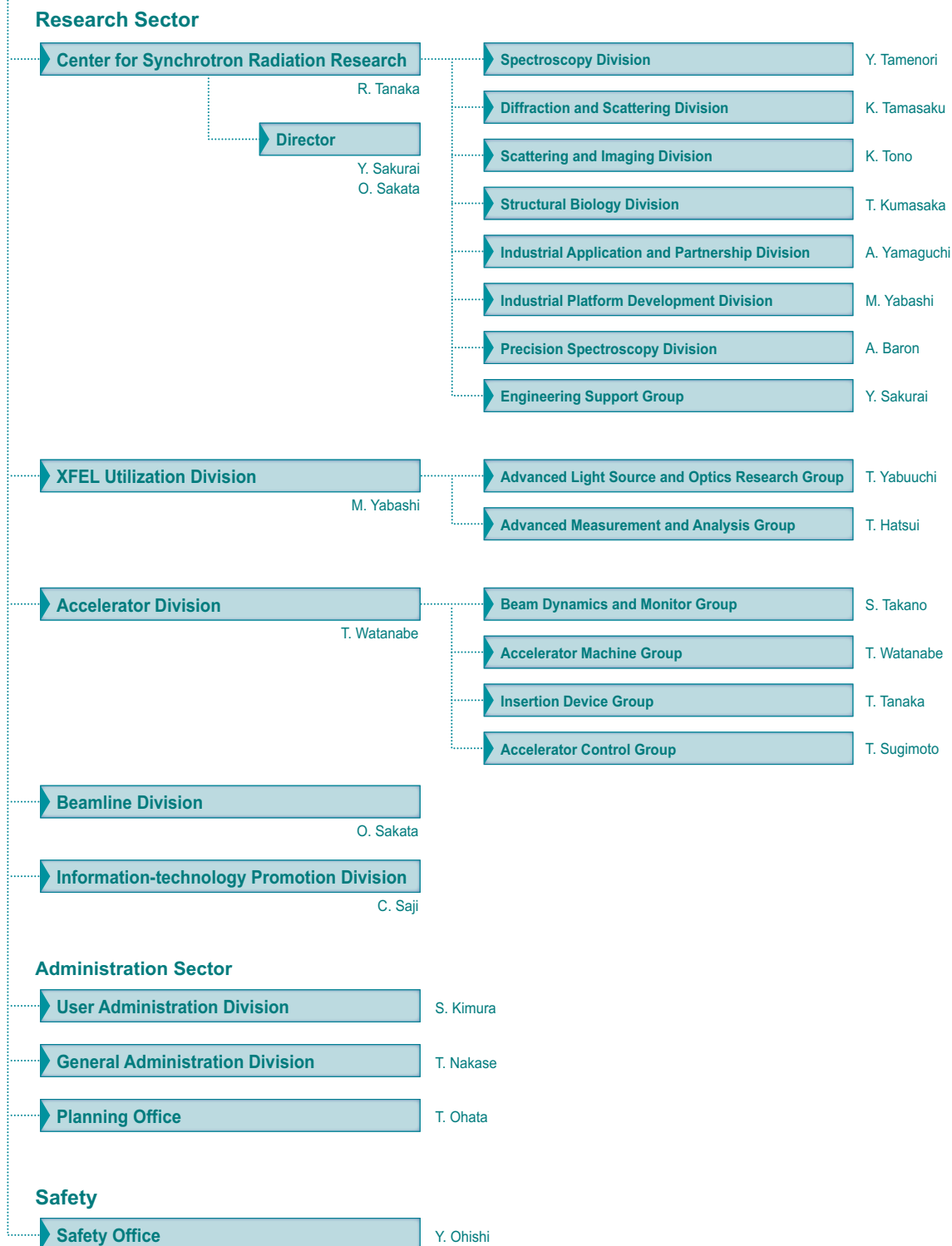


Fig. 18. JASRI chart as of April 2022.