

III. User Program and Statistics

SPring-8 calls for public use proposals twice a year, in principle. Since 2022B term, nine public beamlines started to invite proposals six times annually, including the beamlines previously intended for industrial application. The submitted proposals are reviewed by the SPring-8 Proposal Review Committee (SPring-8 PRC). Since 1997, SPring-8 has accepted a variety of proposals. For the promotion of research on industrial applications at SPring-8, currently, Industrial Application Proposals account for approximately 16%–20% of the total number of proposals conducted at various public beamlines. There always exist those companies and research institutes that find it difficult to retain specialized staff and to accommodate the need for quick access to SPring-8. To appropriately respond to this circumstance, the SPring-8 Measurement Service is provided. In this framework of service, JASRI staff members perform measurements on behalf of users. It is up to the users whether to come to SPring-8 and be present during the measurements or to simply send their samples to SPring-8. BL28XU has been added to the Measurement Service BL from 2022B. Currently, JASRI has expanded the purview of the

SPRing-8 Measurement Service to five measurement methods (XAFS, Powder X-ray Diffraction, Small Angle X-ray Scattering, High energy X-ray CT, Hard X-ray Photoemission Spectroscopy). In addition, JASRI provides the Protein Crystallography Automatic Data Collection at Macromolecular Crystallography beamlines. Therefore, users can choose whether to come to SPRing-8 and be present during the measurements or to simply send their samples to SPRing-8. Since 2022A term, JASRI has started calling for Hour-based use at most public beamlines as part of proprietary time-designated proposals. According to this change, the Feasibility Study Proposals for Industrial Application has been integrated into this proposal program. SPRing-8 is developing a remote-operation system that allows users to control experimental instruments from outside to promote remote access. The number of experiments conducted, and the number of user visits at the public and contract beamlines are summarized in [Fig. 2](#). Part of the proposals are for proprietary use, for which refereed reports are not required. [Figures 3 to 12](#) show the information on user programs.

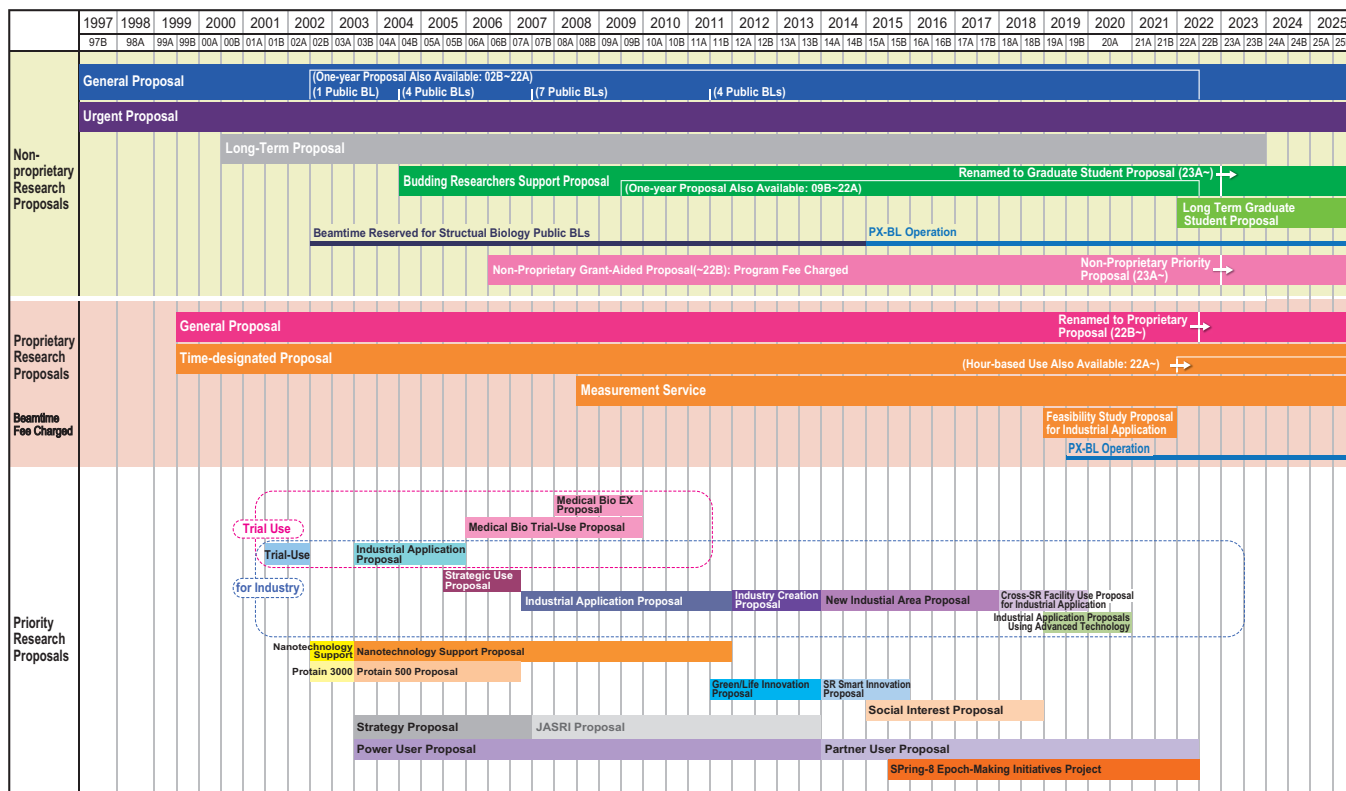


Fig. 2. Categories of proposals for the public beamlines.

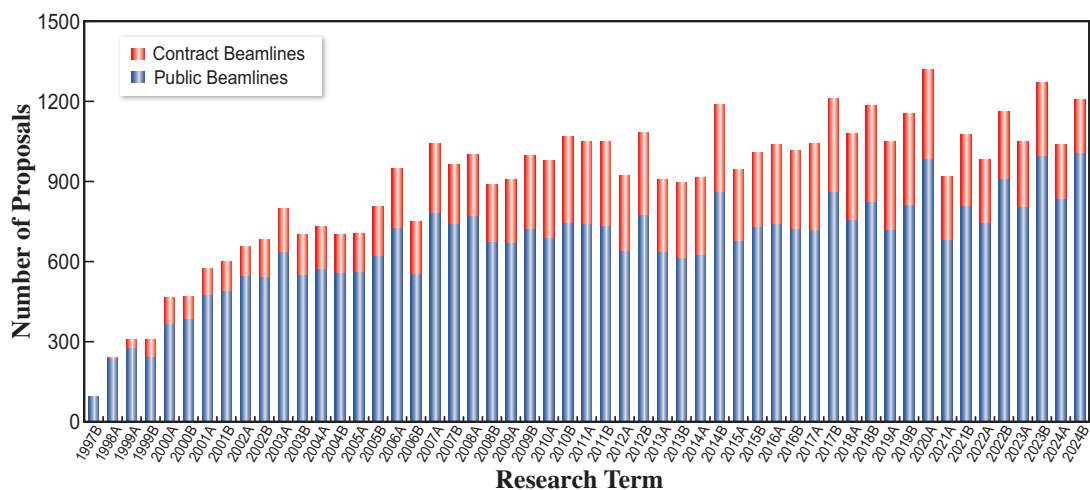


Fig. 3. Numbers of conducted experiments.

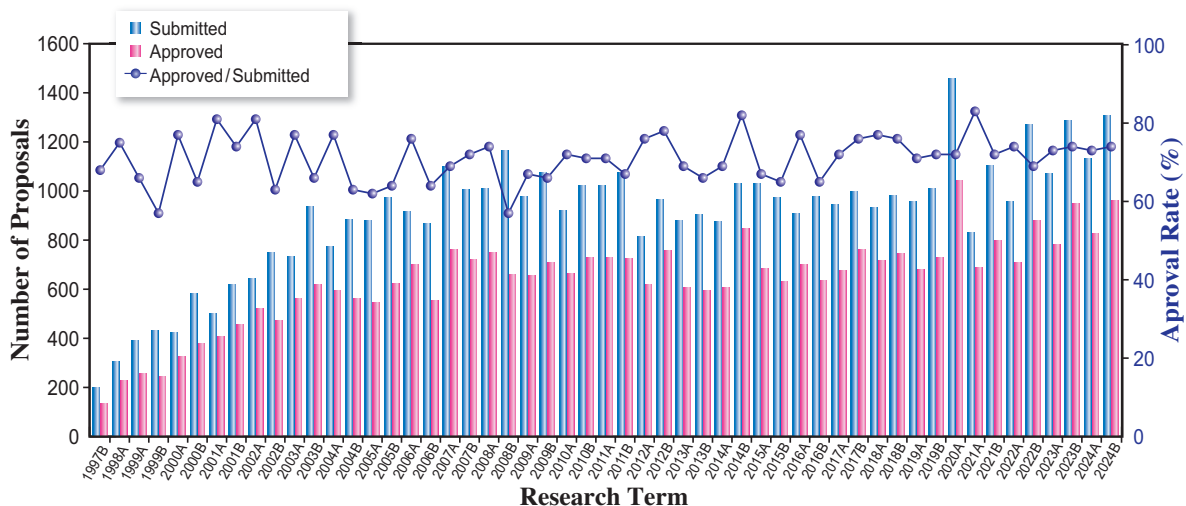


Fig. 4. Numbers of submitted proposals and approved proposals by research term (public beamlines).

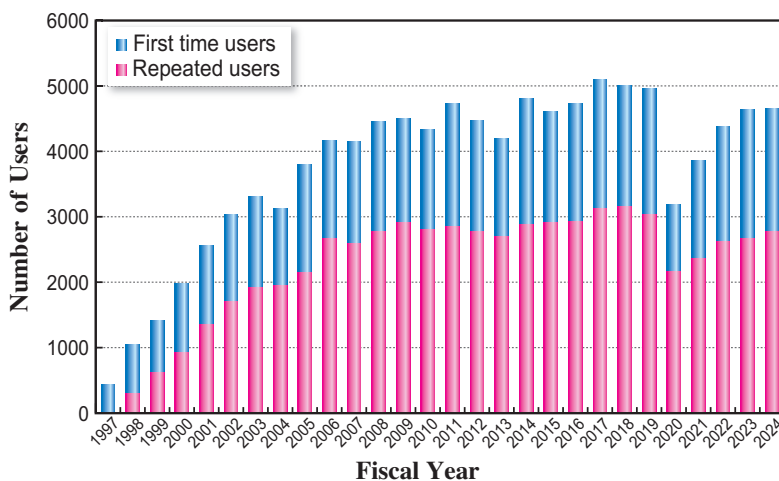


Fig. 5. Numbers of users by fiscal year.

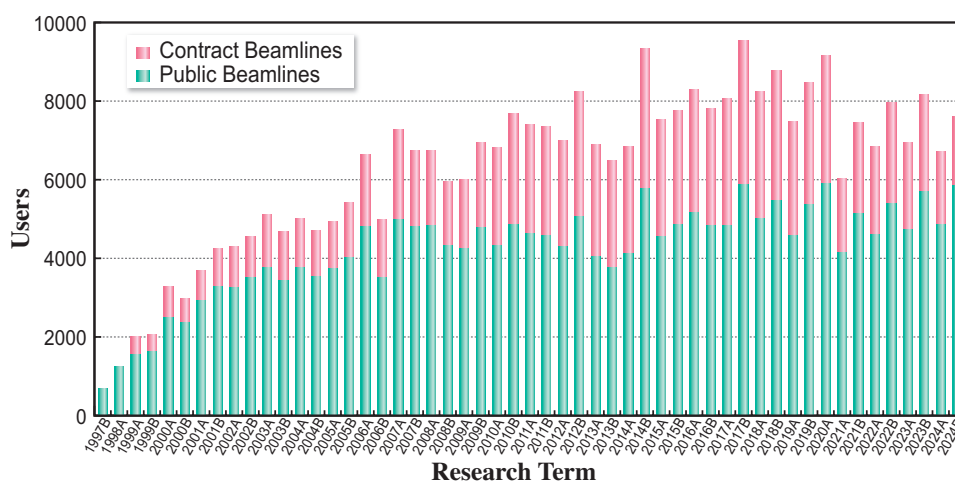


Fig. 6. Numbers of users visits by research term.

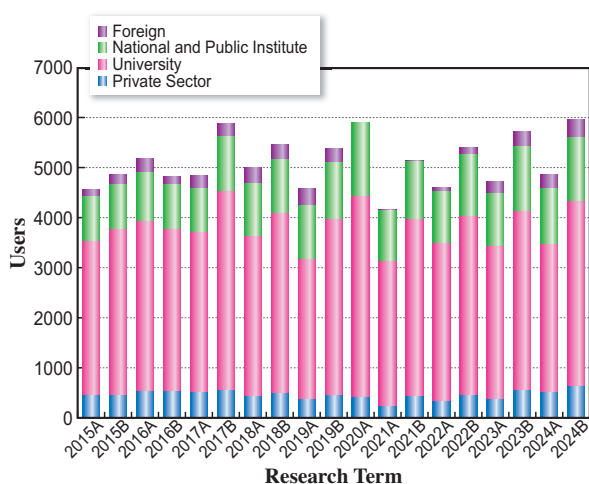


Fig. 7. Numbers of users by affiliation categories (public beamlines).

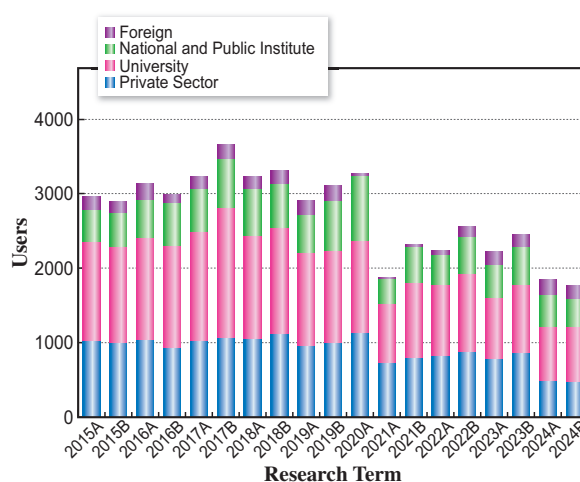


Fig. 8. Numbers of users by affiliation categories (contract beamlines).

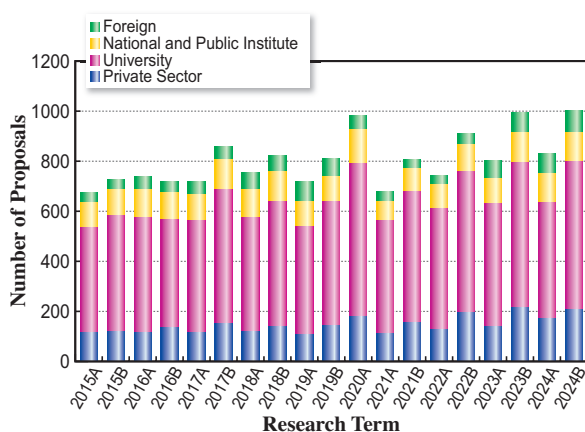


Fig. 9. Numbers of conducted proposals by affiliation categories (public beamlines).

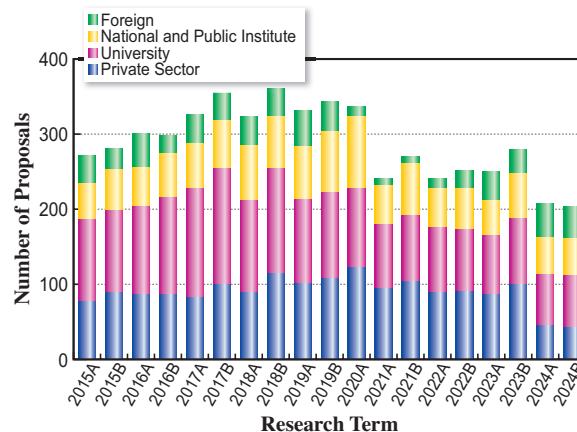


Fig. 10. Numbers of conducted proposals by affiliation categories (contract beamlines).

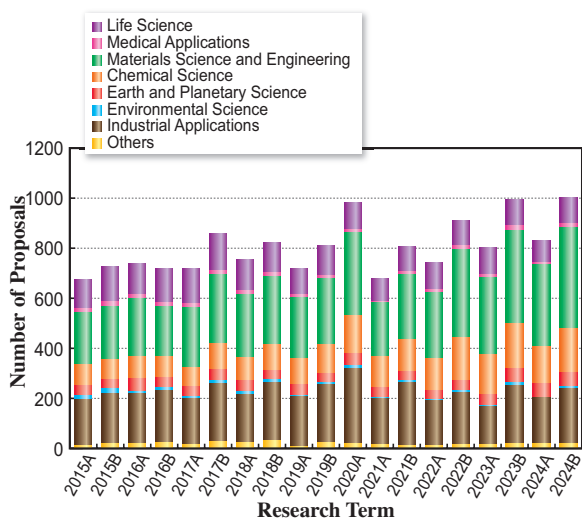


Fig. 11. Numbers of conducted proposals by research area (public beamlines).

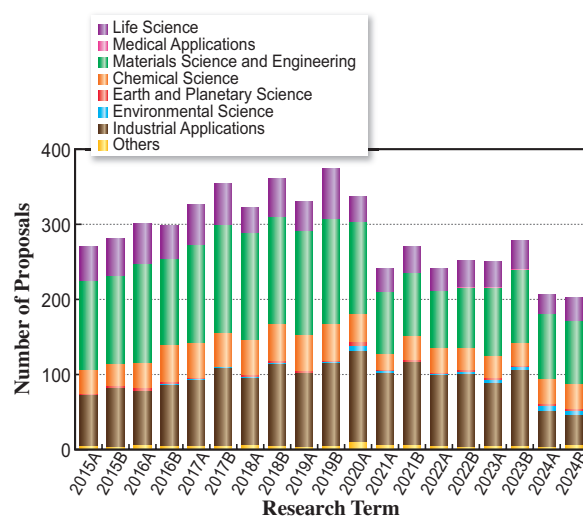


Fig. 12. Numbers of conducted proposals by research area (contract beamlines).

IV. Research Outcome

As of March 2025, the total number of registered refereed papers from SPring-8 is 23,474. Figure 13 shows the annual statistics of refereed papers.

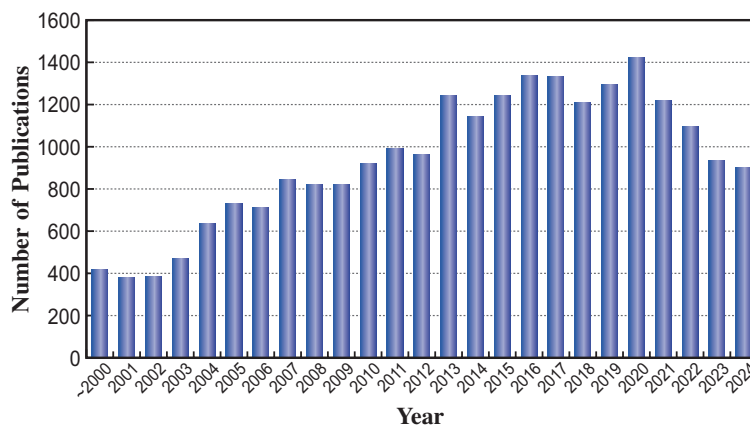


Fig. 13. Number of refereed publications.

V. Research Complex

The facilities of SPring-8, SACLA, and NewSUBARU form the Center of Excellence (COE) on the SPring-8 campus where JASRI, public beamline users, contractors of contract beamlines, RIKEN, and the University of Hyogo work in close cooperation. Thus, a research complex has been formed, where

each member has their own role in achieving high-quality results in the field of synchrotron radiation science and technology. The organizational charts of RIKEN and JASRI, which are at the center of this research complex, are shown in Fig. 14 and Fig. 15, respectively.



Fig. 14. RIKEN Harima Campus chart as of April 2025.

Japan Synchrotron Radiation Research Institute (JASRI)

President : Y. Amemiya
Executive Managing Director : A. Yamaguchi, O. Sakata, Y. Ando

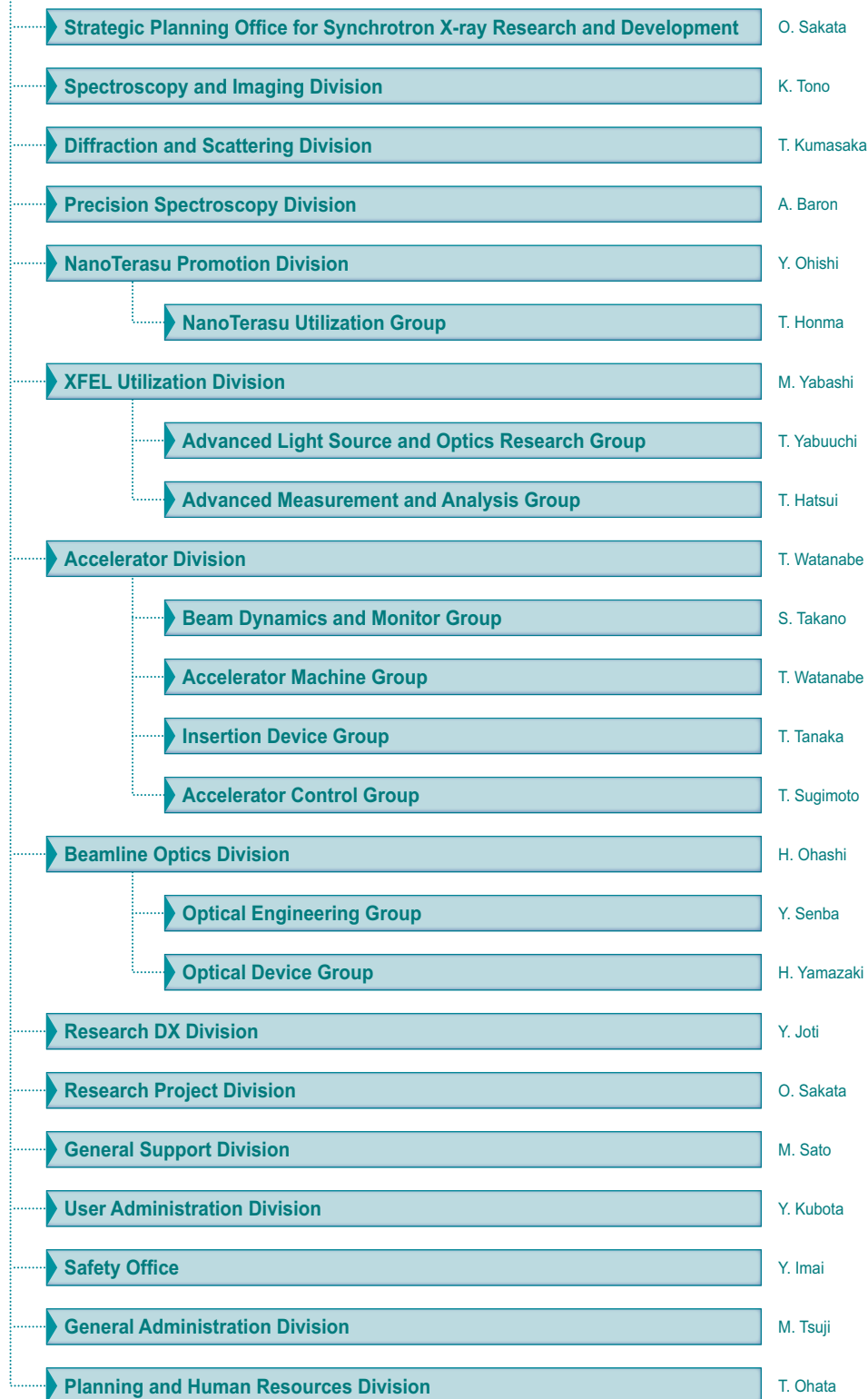


Fig. 15. JASRI chart as of April 2025.